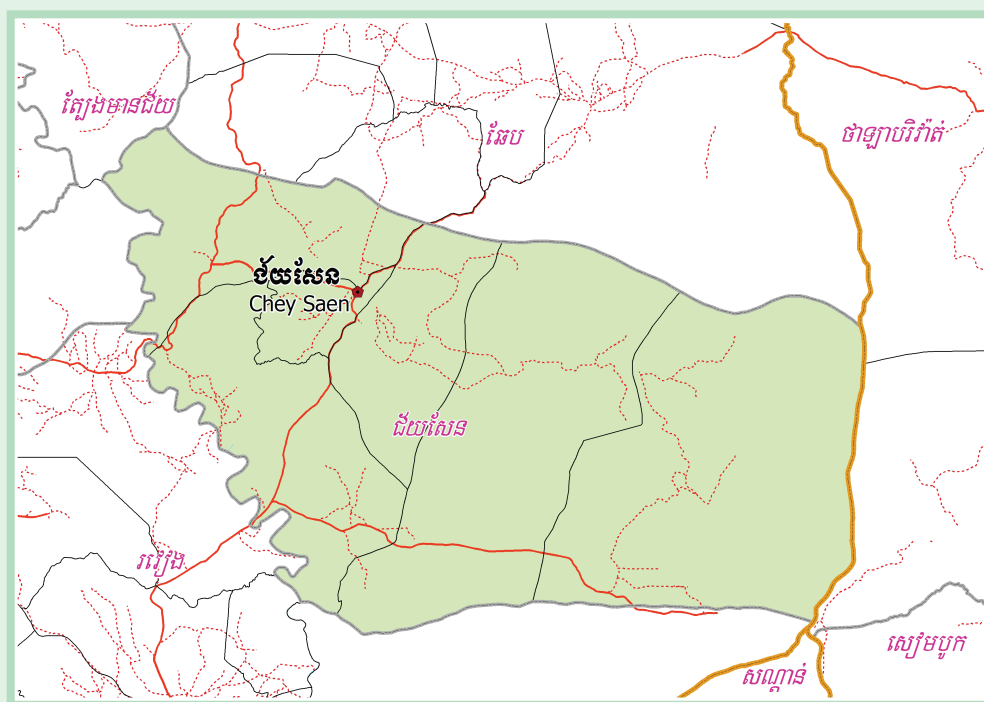


KINGDOM OF CAMBODIA
Nation Religion King



**National Committee for Sub-National
Democratic Development (NCDD)**



CHEY SAEN DISTRICT DATA BOOK 2009

District Code Nr: 1301
Preah Vihear Province

October 2009

Chey Saen District Data Book 2009

District Code Nr: 1301

Preah Vihear Province

Table of Contents

List of Abbreviations	i
Glossary.....	ii
Preface	vi
Introduction	vii
SECTION A: GEOGRAPHY	1
1 Administration and Infrastructure.....	3
2 Land Use and Natural Resources.....	5
3 Geography	7
3.1 Land Area	7
3.2 Distances between Offices	7
SECTION B: DISTRICT PROFILE	9
1 General Information	11
1.1 Population of the District.....	11
1.2 Occupations	12
1.3 Property	14
2 Infrastructure and Economy.....	16
2.1 Roads in meters over 3 years.....	16
2.2 Sewerage Pipes in meters over 3 years.....	16
2.3 Drainage and Bridges	16
2.4 Services in the District	16
2.5 Agriculture.....	17
3 Social Aspects	28
3.1 Education	28
3.2 Health.....	34
3.3 Water and Sanitation	36
3.4 Vulnerable groups.....	40
3.5 Migration	42
4 Natural Resources and Environment (NRE).....	44
4.1 Families involved with NRE issues over 3 years	44
4.2 Percentage of Families involved with Natural Resource issues, by Commune, for 2008	44
4.3 Percentage Houses with access to Garbage collection and Families affected by environmental Pollution, by Commune, for 2008	44
4.4 Percentage Families using chemical Fertilizer and chemical Pesticides, by Commune, for 2008 ..	44
5 Administration and Security	45

5.1	Birth Registration across 3 years.....	45
5.2	Number of unregistered Infants born in 2008, by Commune	45
5.3	Registered criminal Cases over 3 years	45
5.4	Registered criminal Cases per 10,000 people, by Commune, for 2008.....	45
5.5	Number of registered Land Disputes, by Commune, in 2008	45
6	Gender	46
6.1	Registered Domestic Violence over 3 years.....	46
6.2	Percentage of registered cases of Families experiencing domestic Violence, by Commune, in 2008	46
6.3	Women's involvement over 3 years.....	46
6.4	Percentage of Female Participants in Civil Society and of 18-60 year women with uncertain Jobs, by Commune, in 2008	47
6.5	Female-headed Households over 3 years.....	47
6.6	Percentage female-headed Households and with Children of less than 5 years old, by Commune, in 2008	47
7	Indigenous People in the District	48
7.1	Ethnic Minorities in the District over 3 years.....	48
7.2	Other Minorities in the District over 3 years.....	48
	SECTION C: PLANS AND PROJECTS	49
8	Priorities and Plans	51
8.1	Priorities of Commune Councils for 2009 in the District by Sector	51
8.2	Temporary Agreements by Commune, for 2009	55
8.3	Outputs, estimated and actual costs of C/S Fund Projects between 2005 and 2008, by Commune	64
8.4	Total Expenditure on C/S Fund Projects by sector and commune between 2005 and 2008.....	65
8.5	Actual 2009 C/S Fund projects by Commune	65
9	District level Projects from 2006 to 2009	66
9.1	District Initiative Infrastructure Projects from 2006 to 2009	66
9.2	District Initiative Service Projects from 2006 to 2009	67
9.3	Inter Commune Council Projects in 2008 and 2009	67
9.4	Other Projects in 2008 and 2009	67
	SECTION D: SERVICES AND ORGANIZATIONS	69
10	Infrastructure.....	71
10.1	Length of and Expenditure on Roads in 2008, by District	71
10.2	Scale of and Expenditure on Irrigation in 2008, by District.....	71
10.3	Power Supply in 2008, by District	72
11	Health Facilities.....	73

11.1 Health Facilities in the Province, by Operational District.....	73
11.2 Health Facilities and Staff in the province, by Operational District.....	74
11.3 Deliveries in 2007 in the Province, by Operational District.....	74
12 Education	75
12.1 Schools, Classes, Students, Staff, for for all levels, for 2007/2008 by District.....	75
12.2 Characteristics of Schools and School Principals for 2007/2008 by Commune	75
12.3 Enrolment by Level of Education, 2006/2007 by Commune	76
12.4 Enrolment by Level of Education, 2007/2008 by Commune	76
12.5 Aspects of Enrolment for 2007/2008 by Commune.....	76
12.6 School Buildings for all schools in the District for 2007/2008, by Commune	77
12.7 Conditions of Classrooms and Existence of Separate School Office and Library, by Commune	77
12.8 Community Participation and Financing across all schools in the District for 2007/2008 by Commune	77
12.9 Percentage Student Flow Rates and Graduation by level 2006/2007, by Commune	78
13 Staff and Resources at the District	79
13.1 District Councilors elected in 2009	79
13.2 Committees of the Council.....	79
13.3 Board of Governors.....	79
13.4 Offices under Sala Krong, Sala Srok and Sala Khan	80
13.5 Municipality/District/Khan line offices.....	80
13.6 Properties and Equipment of District Administration	80
13.7 Registered Revenue of the District Administration in 2008	81
13.8 Services in the District	81
13.9 Civil Society Organizations active in the District.....	82
13.10 Private Sector Organizations.....	83
SECTION E: POVERTY DATA	85
14 Data on Poverty	87
14.1 Predicted Poverty Rates for 2009, by commune	87
14.2 Poverty data from survey.....	87

List of Abbreviations

#	Number
AGR	Agriculture
BR	Birth Registration
C. Pilot	Piloted Commune
C/S	Commune / Sangkat
CBO	Community-Based Organization
CDB	Commune Database
CDPD	Commune Development and Planning Database
CIP	Commune Investment plan
CLTS	Community Led-Total Sanitation
Comm.	Commune
Com Cov	Commune Covered
CPA	Complementary Package of Activities
CPS	Community Preschool
CCWC	Commune Committees for Women and Children
DANIDA	Danish International Development Agency
DDLG	Democratic Development and Local Governance Project (EC-UNDP)
DFID	Department For International Development (UK)
DIP	District Initiative Project
DIS	District Information System
District PDRD	District Office of Rural Development
District WP	District Work Plan
DIW	District Integration Workshop
DoLA	Department of Local Administration
Dr	Doctor
DWRM	District Office of Water Resource and Meterology
ECD	Early Childhood education (part of PE)
EMIS	Education Management Information System
Event IC	Celebration of International Days
FDH	Former District Hospital
GTZ	German Society for Technical Cooperation (Gesellschaft für Technische Zusammenarbeit GmbH)
Ha	Hectare
HC	Health Center
HC (NB)	Health Center (no building)
HH	Headed Household
HSI	Intervention for Health
HP	Health Post
HW	Hand Washing
ICC	Inter Commune Council
IFAD	International Fund for Agricultural Development
IND	Industry
Inter-commune	Inter-Commune Project Management Committee or Inter-commune project
IO	International Organization
LASED	Land Allocation for Socio-Economic Development
LGCR	Local Governance for Children's Rights
M&E	Monitoring and Evaluation
MA	Medical Assistant
MoEYS	Ministry of Education, Youth and Sports
MoH	Ministry of Health

MoP	Ministry of Planning
MPA	Minimum Package of Activities
MW1	Primary Midwives
MW2	Secondary Midwives
n/a	Not available
NCD	National Contracts Database
NCDD	National Committee for Sub-National Democratic Development
NGO	Non-Governmental Organization
NRML	Natural Resources Management and Livelihood
NU1	Primary Nurse
NU2	Secondary Nurse
OD	Operational District
ODF	Open Defecation Free
Ope. Costs	Operational Costs
Others	Other Staff
PBW	Public Works
PDoEYS	Provincial Department of Education, Youth and Sport
PDRD	Provincial Department of Rural Development
PDWRM	Provincial Department of Water Resource and Meteorology
PE	Parenting Education
PHAST	Participatory Hygiene and Sanitation Transformation
PHD	Provincial Health Department
PID	Project Information Database
PMC	Project Management Committee
Pop 04-05	Population Covered 2004 or 2005
PSDD	Project to Support Democratic Development through Decentralization and Deconcentration
RRD	Rural Road Development
RH	Referral Hospital
RILGP	Rural Investment and Local Governance Project
RPRP	Rural Poverty Reduction Program
RuLIP	Rural Livelihoods Improvement Program
SIDA	Swedish International Development Cooperation Agency
SPPA	Senior Provincial Program Advisor
TBA	Traditional Birth Attendant
UNDP	United Nations Development Project
UNICEF	United Nations Children's Fund
Vil	Village
Vil Cov	Village Covered
VIL-HC	Distance from Village to Health Center
WASH	Water, Sanitation and Hygiene
WRM	Water Resource and Meteorology

Glossary

C/S Fund: The Commune/Sangkat Fund is established and managed by the Government of Cambodia to provide financial support for development projects and administrative costs of Commune/Sangkat Councils. The amount is determined as a percentage of the National Budget (for 2009: 2.8% over the 2008 budget) and is expected to increase gradually over the years. The total 2009 budget under this fund is \$ 27,643,902 (of which \$ 19,272,170 is for Development Projects and \$ 8,371,731 for Administration). Under the Rural Investment and Local Governance Project the World Bank currently reimburses the costs of development projects if these meet the Bank's criteria.

CDB: the Commune Data Base is a national database, compiled by the Ministry of Planning, on the basis of detailed questionnaires, completed at village and commune level, which are then sent to the Departments of Planning for data entry. The most recent round of data collection took place at the end of 2008 (and is reflected in the District Data Books). Commune, District and Provincial Profiles can be generated from this database and should be available from provincial Departments of Planning.

CDPD: the Commune Development and Planning Database is a database maintained by Departments of Planning and Ministry of Planning, recording proposed activities as determined and prioritized by Commune and Sangkat Councils; the Temporary Agreements between these councils and supporting agencies, as decided at District Integration Workshops and details on projects that actually take place at commune, district and provincial levels.

CIP: The Commune Investment Plan is a rolling three-year plan, developed and decided by the Commune or Sangkat Council. It sets priorities and identifies the projects proposed for the years to come.

Commune and Sangkat (C/S): the Communes (in rural areas) and Sangkats (in urban areas) are the lowest and smallest units of local government. Councils are elected directly, once in five years, for the 1417 Communes and 204 Sangkats. In the C/S there are 14,119 villages, which have Village Chiefs, but don't constitute a formal level of local government.

DIP: the District Initiative Project is jointly supported by the MDLF (Multi-Donor Livelihood Facility (supporting the NRM&L Program)) and PSDD. In 2009 it covers 106 districts, 60% of the total in the country, with a budget of \$ 3.2 million. It is focused on capacity development in planning, democratic development, public competitive procurement, financial management and service delivery.

DIS: The District Information System is a national database maintained by NCDD, recording resources, staff, revenue, infrastructure and equipment available in the 193 Districts and Khans throughout the country. The last update took place in July 2009.

District, Municipality and Khan constitutes the third level of Government in Cambodia. There are 159 rural Districts, 26 Municipalities and 8 Khans of Phnom Penh Capital. They all have Councils which were, for the first time, elected in May 2009, by the Commune/Sangkat Councilors. These councils have a mandate for 5 years.

DIW: District Integration Workshops are held between July and October, to bring Commune/Sangkat Councils, looking for support for their projects, together with the governmental and non-governmental agencies that may provide support.

ICC: Inter Communes Council projects are executed in 10 provinces under the Democratic and Decentralized Local Governance Project (DDLG). This five year project (2006-2010) is executed by Ministry of Interior and funded by the European Commission and UNDP. The project focuses on improving dialogue partnership and accountability; create a network of Commune Councils at the provincial and national level and support and contribute to local area development for poverty reduction. The work under the ICC component supports investments and services formulated through inter-commune dialogue and planning.

MEDiCAM: A non-profit and non-partisan membership organization for NGOs active in Cambodia's health sector. It is the primary networking agency for health-related NGOs.

NCDD: the National Committee for sub-National Democratic Development is the inter-ministerial body charged with the implementation of the Organic Law (a key legislative document, adopted in 2008, outlining the envisaged decentralization). NCDD also channels substantial financial assistance by a number of Development Partners, to projects and programs at various levels. This amounted to over \$ 91 million in 2008. More information at: www.ncdd.gov.kh. This website also provides access to reports, manuals, legal documents, details on projects and more.

OD: the Operational Districts are the districts as defined and used by the Ministry of Health. These do not coincide with the 193 (Administrative) Districts and Khans, as used by all other RGC agencies. The Operational Districts are usually larger, and so there are 77 Operational Districts against 193 administrative Districts and Khans. However they do fit within the boundaries of administrative provinces.

PID: The Project Information Database is the database maintained by NCDD at national and sub national level, to follow all aspects of projects by Commune and Sangkat Councils, including the C/S Fund projects

Provincial Investment Fund (PIF)

The Provincial Investment Fund is allocated to all Provinces and Municipalities according to a population based formula. Part of the fund is earmarked for support to planning activities of the Provincial / Municipal Department of Planning; and to gender mainstreaming activities of the Provincial Department of Women's Affairs. The remaining "un-earmarked PIF" is allocated by PRDC to sectoral technical departments against established criteria and in response to proposals with prioritisation taking into account: priorities formulated by the CS Councils and aggregated by District into District Priority Activities Matrices (DPAM); alignment with national planning and poverty alleviation criteria, complementarity with other planned activities; and performance of the Department concerned in implementation of activities in previous years. With this provisional allocation, the Department then programs activities through the District Integration Process. Finally, the agreed activities, plus support costs amounting to no more than 25% of the total, are included in a sub-contract signed between PRDC and the Department, pursuant to the overall PSDD contract signed between NCDD and PRDC. Total budget has been around \$ 2 million per year.

Province: the 23 Provinces and Phnom Penh Capital City represent the 2nd layer of government. They vary in size, from very small, like Kep (approx. 36,000 people) and Pailin (approx. 70,000 people), or large but with small populations, like Mondulkiri (over 60,000 people), and Ratanakiri (over 153,000) to densely populated and large, like Kampong Cham (over 1.7 million people) and Kandal (approx. 1.4 Million people).

PSDD: the Project to Support Democratic Development through Decentralization and Deconcentration is funded by DFID (UK), SIDA (Sweden) and UNDP and runs from 2006 till the end of 2010 (including a one year extension). Annual budgets range from \$ 11 million to over \$ 18 million. The project provides core technical support to NCDD and to the provinces, financial support to the C/S Fund, District Initiative, Provincial Investment Fund and capacity building support through training, studies and advisory services.

RILGP: The Rural Investment and Local Governance Project is a World Bank funded project that provides substantial support to C/S Fund projects and to developing the required infrastructure, policies, systems and skills. It started in 2003 with a Loan for \$ 22 million for 2003-2007 and was then extended with a Grant of \$ 36 million for the period of 2007-2010. Discussions about a possible RILGP 2 are taking place between RGC and the World Bank.

RPRP: the Rural Poverty Reduction Project is a seven year project from 2004 till 2010, funded by IFAD and UNDP and implemented through the Ministry of Agriculture, Forestry and Fishery, supported by the Ministry of Interior and facilitated by NCDD. The project is active in the provinces Prey Veng and Svay Rieng and focuses on 120,600 households below poverty line. The objective is poverty reduction with the active participation of the poor through improved livelihoods, Strengthened capacity, Sustainable farming systems and natural resource management, new and/or rehabilitated infrastructure development, increase accessibly to technology, services and markets for their economic and social development.

RULIP: the Rural Livelihoods Improvement Project is implemented by the Ministry of Agriculture Forestry and Fisheries (MAFF)' Project Support Unit- PSU, with the NCDD playing the role of cooperating agency. Funded by IFAD and UNDP, the project will run till 2014. The target group consists of poor households who have little or even no land, few livestock or other assets and often many dependents. The main goal of the project is to directly or indirectly improve the livelihood systems, food security and incomes of a total of 33,900 rural poor, ethnic minority and female headed households in targeted village of Kratie, Preah Vihear and Ratanakiri provinces in a sustainable manner.

Seth Koma: The UNICEF funded Seth Koma program focuses on measurable action for children and women. During 2006 -2010 it is implemented in six provinces. Government and UNICEF pursue a set of inter-related goals, addressing critical stages of the life cycle of the child: a) Mothers have safe pregnancies and deliveries and healthy newborns; b) best possible start in life of infant; c) Children enter schools at the right age of six years; d) Children are protected from exploitation, abuse, violence, discrimination and other risks; and e) Youth and adolescents acquire life skills, express their views, participate in the decisions.

Preface

The Government of Cambodia attaches great importance to optimal use of scarce resources and to participatory planning and management at all levels. The Organic Law which was adopted in 2008 provides the legal context for further steps towards improving and decentralizing planning, management and monitoring, and towards greater accountability and transparency of institutions at sub-national levels.

The Government has established elected Councils at the sub-national levels, and we will progressively give them the responsibilities, together with the human and financial resources, to deliver a wide range of public services. They will be more democratic, more efficient, more transparent and accountable, better at addressing gender and other inequalities, and at fighting corruption. We recognize that development does not come from government alone; it needs the involvement of citizens, civil society and the private sector, and the new system will facilitate this.

A central element in this process is the availability of information on any aspect of development to all concerned parties. The newly elected Councillors at District and Khan level, line departments operating at these levels, but also NGOs, Development Partners, Commune Councillors and citizens throughout Cambodia need information on problems and requirements, resources and opportunities, services and agencies, plans and projects. They will need such information to better understand the present situation, set targets for the future, monitor progress, know what others are doing and to apply resources wisely and this is the reason the District Data books will be so valuable.

The District Data Books are a major step towards full transparency and towards informed planning and decision-making. They provide all available data at District, Khan, Commune and Sangkat level in easily accessible formats, in Khmer and English, through over 16,000 printed copies, CD-ROMs and the NCDD website.

This is the first time in Cambodia (and possibly in South East Asia) that such detailed information is made so widely available and NCDD should be commended for the hard work that has gone into this. We also thank the Ministry of Planning, which provided the detailed data of the Commune Data Base, the sectoral ministries and provincial authorities who contributed data and the Development Partners who provided financial support.

It is our sincere hope that the publication of the District Data Books will strengthen capacities, especially at district levels, for evidence-based development planning. We also hope that this information will deepen the understanding among Ministries, Provincial Authorities, Development Partners, NGOs and research agencies of the realities at commune and district levels.

We call upon all to use and distribute this information, complement or correct where appropriate and to contribute new data in the years to come.

Sar KHENG

Deputy Prime Minister, Minister of Interior and Chairman of NCDD

Introduction

Purpose

The purpose of the District Data Books is to bring together information on any aspect of life and development of Districts, Khans, Communes and Sangkat, together and make this widely available. The primary targets are the newly elected District Councilors, district level line departments, provincial agencies, Development Partners and NGOs operating at this level. They need detailed knowledge on current living conditions, natural resources, infrastructure, agriculture and other economic activities, current service levels, past and planned projects and available resources.

While much information exists on many of the above aspects, it is often hard to access that information and much is lost to reports, databases and statistics that are not widely shared. Data are often only available in one language and often out-of-date, and many reports cover only one sector or region.

We found that these problems are especially acute at the district level. Now that Districts are becoming a much more significant level of local government and development planning, there is an urgent need for wide-ranging data to be used for setting base-lines, planning and prioritizing, monitoring and learning.

Approach

We have attempted to identify and compile all available statistics, reports, maps and other data at district and/or commune level. From this we have selected information that is available for all or most districts, reasonably reliable and up-to-date, sufficiently detailed and of possible interest to development planners, decision makers, agencies and citizens.

The major sources of the information in these District Data Books are:

- a) The Commune Data Base information over the years 2006 to 2009 (the most recent data were collected late last 2008), as compiled by the Ministry of Planning
- b) Detailed information directly collected from the Ministry of Health, the Ministry of Education, Youth and Sports and (for maps) the Ministry of Land Management, Urban Planning and Construction
- c) The Project Information Database (PID) at NCDD (up-to-date)
- d) The Commune Development and Planning Database (CDPD) (up to date)
- e) The District Information System (DIS) (updated per Mid 2009)
- f) Direct data collection at provincial and district level on private sector, irrigation, roads, and electricity, through provincial agencies
- g) Medical data collected from MEDiCAM
- h) The ID Poor Project – for poverty data on a number of provinces and districts
- i) NCDD's work on predictive poverty rates
- j) Specific projects for outputs, plans and budgets (Seth Koma, RILGP, RPRP and ICC)

Limitations of the data

We are fully aware that the data we collected are not always complete, consistent or correct. While we have rejected information that was wrong or very incomplete, we decided not to aim for statistical and scientific perfection, but to include information that is useful, relevant

and comprehensive. We also accepted different sources for the same data as this may encourage discussion on the quality of the respective data.

We strongly encourage anyone who notes errors or incompleteness in these data to contact us and to share their data. We hope that the next round of producing such District Data Books can draw on wider sources and more complete data.

We encourage the District Administrations, who receive these data also in digital format, not only to use these for their planning and monitoring, but also to start correcting and updating these data and to share new data with NCDD for future use.

Contents

The information in the following pages is organized in five sections:

- a) **Geographical data:** this section provides maps on infrastructure and administration and on land use and natural resources management. These maps are also provided in large format to all Districts and Khans.
- b) **District Profile:** this presents wide ranging data, covering 2006 – 2009, at district and commune level, extracted from the Commune Data Base, but edited for better understanding.
- c) **Plans and Projects:** this section presents development priorities determined by Commune and Sangkat Councils, Temporary Agreements, outputs and expenditure of major projects at Commune and District level over 2006 – 2008 and plans and budgets for 2009.
- d) **Services and Organizations:** this section provides details on key infrastructure (roads, electricity, irrigation systems) and services in health and education at district and commune level. It also provides an inventory of resources at the District Administration, NGOs operating in the district and private sector agencies active in the district.
- e) **Poverty Data:** this section provides predicted poverty rates for 2009 for all districts and communes and detailed poverty data compiled and processed by the ID Poor project for those that have been covered by this project.

The future

It is our hope that this is the start of a longer-term process. We hope that a next edition of these District Data Books will offer more comprehensive, correct and up-to-date information. We hope that the District Administrations will not only start using this information, but also improve and update it. For this they are all provided with the full data set in digital format.

We invite agencies, projects and experts to send reports, statistics and maps that could be used for a next version to us and we invite all users of the District Data Books to inform us about errors, updates and inconsistencies. Please contact us through info@ncdd.gov.kh

We now invite you to browse through this data book. You may open this randomly or use the table of contents and go to the aspects that have your special interest.

We hope that you will be informed, surprised and assisted. We hope, above all, that this information will lead to a deeper understanding of causes and effects of poverty, to purposeful decisions on how to tackle those causes and to greater transparency in using scarce resources for the benefit of all.

Martin de Graaf
Program Advisor, PSDD/NCD

SECTION A: GEOGRAPHY

1 Administration and Infrastructure

Please see separate folder containing A3 maps.

2 Land Use and Natural Resources

Please see separate folder containing A3 maps

3 Geography

3.1 Land Area

Total Land Area (ha)	Forest Land Area (ha)		Cultivation Land Area (ha)	Construction Land Area (ha)	Other Land Area (ha)
	Total	Flooded Forest Area			
109933	102894	225	5539	1500	0

3.2 Distances between Offices

Location	Distance (Km)
From District Office to C/S Office of S'ang	0
From District Office to C/S Office of Tasu	0
From District Office to C/S Office of Khyang	0
From District Office to C/S Office of Chrach	0
From District Office to C/S Office of Thmea	0
From District Office to C/S Office of Putrea	0

SECTION B: DISTRICT PROFILE¹

¹ All data in this section come from the Commune Database (CDB) unless otherwise specified. These include primarily new CDB data, collected late 2008, and some data from earlier years. Please note that percentages are rounded to the nearest whole number.

1 General Information

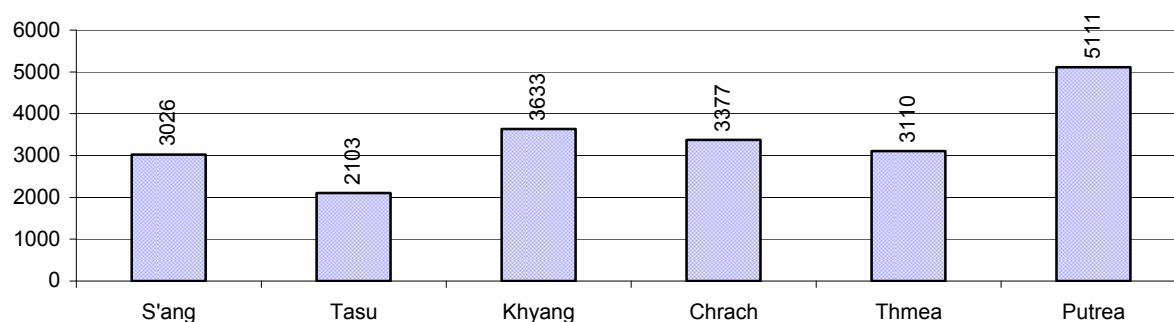
1.1 Population of the District

1.1.1 Total Population

Number of families	2005	2006	2007	2008
Total number of families	3,497 families	3,807 families	3,954 families	4,105 families
Increase (+)/Decrease (-) in nr of families		9%	4%	4%
Total population	18,614 pers	18,747 pers	19,180 pers	20,360 pers
Increase (+)/Decrease (-) in nr of people		1%	2%	6%
Number of female Headed Households (HH)	261 families	258 families	286 families	290 families

Note: Percentages of population and increase/decrease are calculated on basis of the previous year. A negative sign in front of the percentage indicates a decrease in population.

1.1.2 Population, by Commune, in 2008



1.1.3 Population, by Age Group, over 3 years

Population by age group	2006	2007	2008	
	%	%	%	Number
Age 0-5 years (as percentage of the population)	17%	16%	16%	3,323 persons
Male 0-5 yrs	49%	50%	53%	1,752 persons
Female 0-5 yrs	51%	50%	47%	1,571 persons
Age 6-17 (as percentage of the population)	32%	32%	30%	6,147 persons
Male 6-17 yrs	51%	51%	50%	3,071 persons
Female 6-17 yrs	49%	49%	50%	3,076 persons
Age 18-60 (as percentage of the population)	47%	47%	48%	9,787 persons
Male 18-60 yrs	49%	48%	48%	4,678 persons
Female 18-60 yrs	51%	52%	52%	5,109 persons
Age 61 above (as percentage of the population)	4%	5%	5%	1,103 persons
Male 61	46%	46%	48%	532 persons
Female 61	54%	54%	52%	571 persons

Note: The overall percentage for each age group is calculated on the basis of the total population. The gender distribution of each group is calculated on the basis of the population within that particular age group.

1.2 Occupations

1.2.1 Percentage of families with a particular Occupation over 3 years

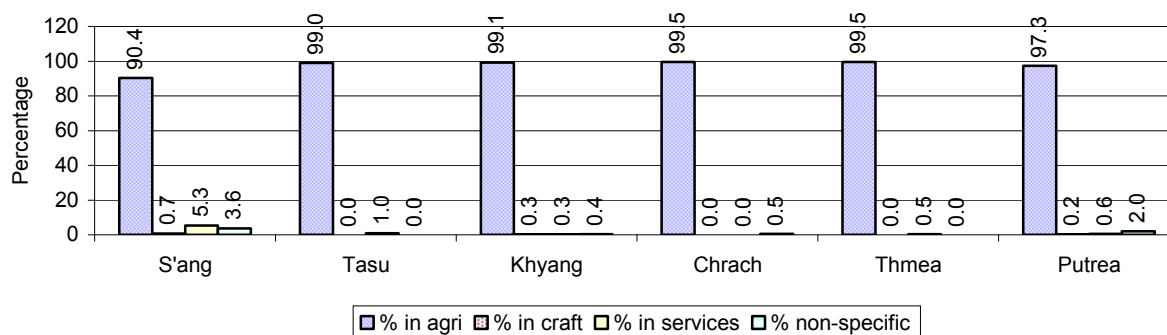
This table shows the percentage of the population who have a particular occupation (job), for example the percentage of the population in the district who are rice farmers, furniture crafter, trader, etc.

Description	2006	2007	2008	
	%	%	%	Number
Families whose main occupation is agriculture	99%	98%	98%	4,004 Families
Families whose primary occupation is rice farming	99%	98%	97%	3,983 Families
Families whose primary occupation is cultivating long-term crops	0%	0%	0%	3 Families
Families whose primary occupation is cultivating short-term crops	0%	0%	0%	15 Families
Families whose primary occupation is cultivating vegetable	0%	0%	0%	1 Families
Families whose primary occupation is fisherman	0%	0%	0%	1 Families
Families whose primary occupation is livestock farmer	0%	0%	0%	0 Families
Families whose primary occupation is NTFP collection	0%	0%	0%	1 Families
Families whose main occupation is craft work	0%	0%	0%	8 Families
Families, whose main occupation is in furniture craft, wooden, rattan, vine, bamboo	0%	0%	0%	6 Families
Families whose main occupation is in metal, aluminum, glass goods production	0%	0%	0%	0 Families
Families whose main occupation is food production	0%	0%	0%	2 Families
Families whose main occupation is tire, plastics and rubber goods production	0%	0%	0%	0 Families
Families whose main occupation is textile, clothing goods production	0%	0%	0%	0 Families
Families whose main occupation is in other production, not listed above	0%	0%	0%	0 Families
Families whose main occupation is services	1%	1%	1%	46 Families
Families whose main occupation is trade	0%	1%	1%	34 Families
Families whose main occupation is repair	0%	0%	0%	11 Families
Families whose main occupation is providing transport services	0%	0%	0%	0 Families
Families whose main occupation is providing other services	0%	0%	0%	1 Families
Families whose main occupation is not clear (or multi)	0%	1%	1%	47 Families

Note: The occupation percentages are calculated on the basis of the total number of families.

1.2.2 Percentage Families that work in one of four occupational sectors, by Commune in 2008

This table indicates the percentage of families involved in one of four occupation types: agriculture, craft, services or non-specific (other). Please note agriculture includes forestry activities such as cutting down trees and gathering gum from the trees.



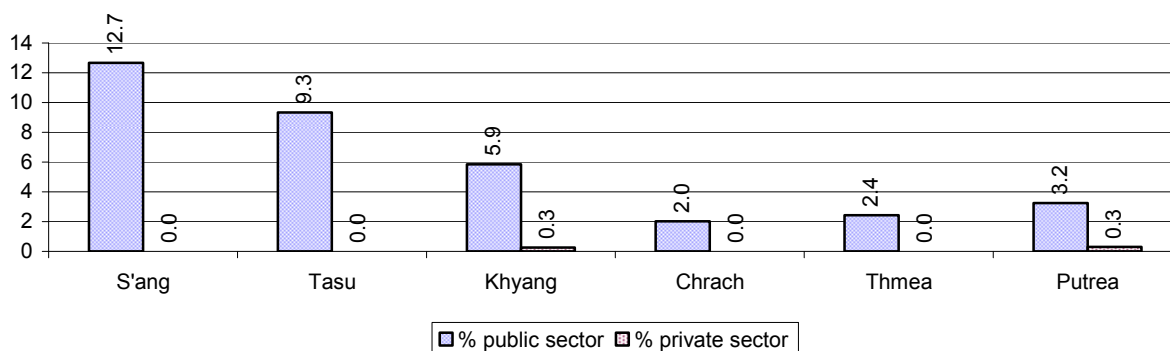
Note: Calculated on the basis of the total number of families within a commune.

1.2.3 Percentage of Families with public Sector, private Sector or uncertain Jobs, over 3 years

Description	2006	2007	2008	
	%	%	%	Number
Families that have a family member who is a government official, staff or worker	4%	5%	5%	221 families
Families that have a family member who is a private sector staff or worker	0%	0%	0%	5 families
Number of people aged 18-60 with uncertain/irregular jobs	1%	9%	0%	15 persons

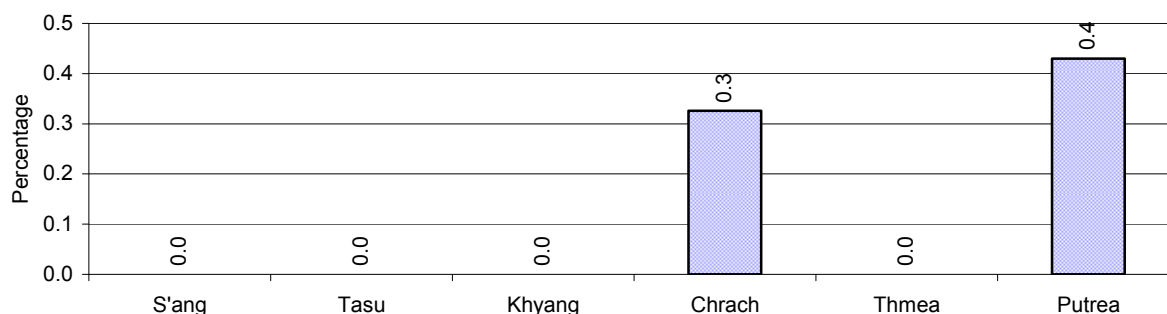
Note: In the first two rows percentages are calculated on the basis of the total number of families. In the third row the percentage is calculated on the basis of the total number of people aged 18-60 years.

1.2.4 Percentage of Families with public or private Sector Jobs, by Commune in 2008



Note: Calculated on the basis of the total number of families in the commune

1.2.5 Percentage of People aged 18-60 years with uncertain/irregular Jobs, by Commune, in 2008.



1.3 Property

1.3.1 Housing types and facilities over 3 years

This table shows the percentage of people living in a certain type of house. It also indicates how many houses have electricity or battery powered lights and how many have TV.

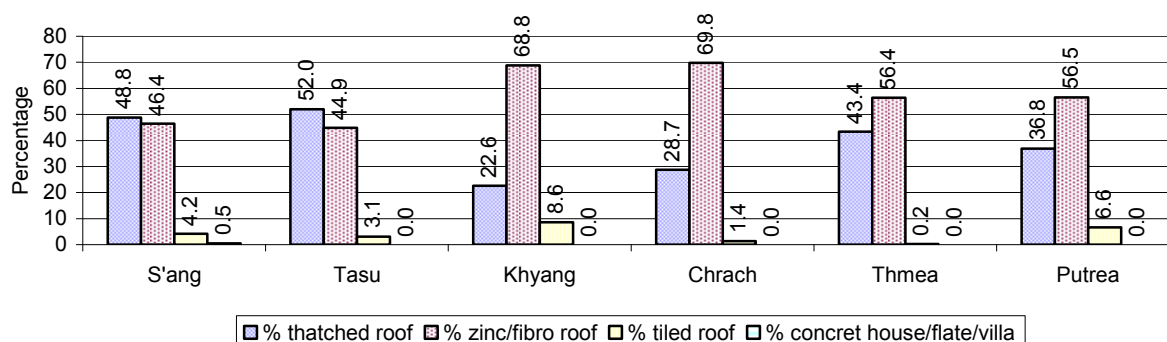
House Type	2006	2007	2008	
	%	%	%	Number
House with thatched roof	42 %	43 %	37 %	1,364 houses
House with zinc/fibro roof	55 %	52 %	58 %	2,134 houses
House with tiled roof	4 %	4 %	5 %	166 houses
Flats/apartments (with many families living)	0 %	1 %	0 %	0 houses
Concrete house or flat (with one family living)	0 %	0 %	0 %	3 houses
Villa house	0 %	0 %	0 %	0 houses
Houses with electricity	0 %	1 %	0 %	0 houses
Houses with battery light	11 %	13 %	20 %	742 houses
Houses with TV	3 %	6 %	8 %	295 houses

Note: Calculated against the total number of houses

1.3.2 Families living on public Land or without a permanent House

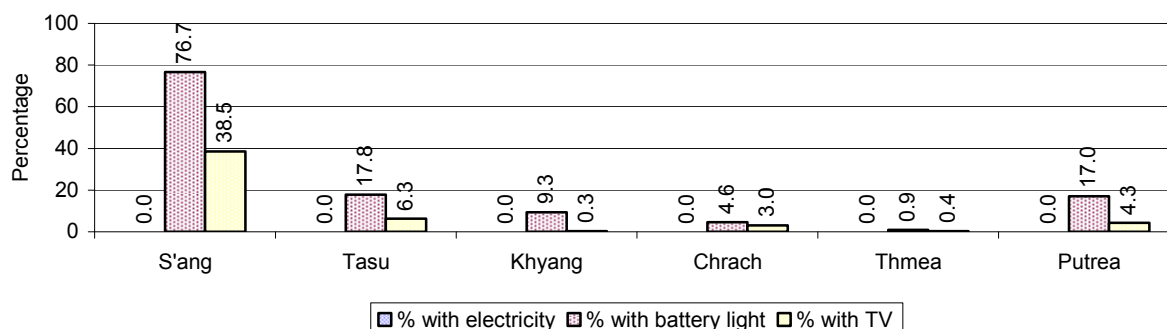
Living situation	2006	2007	2008
Families living in a house on public land	2 families	8 families	5 families
People, without permanent housing	4 person(s)	14 person(s)	5 person(s)

1.3.3 Percentage of Population living in a particular type of House, by Commune, in 2008



Note: Calculated against the total number of houses in each commune

1.3.4 Percentage of Houses with Electricity, Battery Lights and/or TVs, by Commune, in 2008



Note: Calculated against the total number of houses in each commune

1.3.5 Types of Vehicles and their ratio to Families across 3 years

This table shows the number of families per vehicle in the district. The last column shows the total number of each type of vehicle in the district for 2008.

Description	2006 ratio	2007 ratio	2008	
			Ratio	Number
Bicycle and bicycle with trailer	2	2	2	2,092
Ox-carts and horse-carts	4	3	4	1,099
Motorbike/with trailer	8	6	5	845
Motor tri-cycle	N/A	N/A	N/A	0
Large Transportation				
Total number of cars/trucks	381	188	187	22
Locally made vehicles	N/A	1,977	2,053	2
Trucks for goods transport	635	359	342	12
Buses/mini buses for passengers	3,807	3,954	N/A	0
Family cars	1,269	565	513	8
Agriculture machinery				
Tractors used for plowing	1,904	1,977	4,105	1
Power-tillage used for plowing	6	5	4	958
Other type of machinery				
Other type of machinery	81	N/A	2,053	2
Water transportation				
Row boats	22	16	14	289
Total number of motor boats	476	395	373	11
Motor boats used for fishing	952	395	373	11
Motor boats used for passengers	1,269	N/A	N/A	0
Motor boats used for goods transporting	3,807	N/A	N/A	0

Note: Ratio of families to a particular type of vehicle is the result of the total number of families divided by total number of that type of vehicle. Other types of vehicles, such as bulldozer, excavator, rollers etc. are not listed.

2 Infrastructure and Economy

2.1 Roads in meters over 3 years

Description	2006	2007	2008
Bituminous road	0 m	0 m	0 m
DBST, Macadam road	0 m	0 m	0 m
Concrete road	0 m	0 m	0 m
Laterite road	4,623 m	12,651 m	45,071 m
Constructed earth road	6,530 m	4,280 m	25,500 m
Un-constructed earth road	33,778 m	33,401 m	43,083 m

2.2 Sewerage Pipes in meters over 3 years

Description	Sewage pipe length		
	2006	2007	2008
Total length of sewage pipe, diameter 30-50 cm	0 m	0 m	4 m
Length of newly constructed sewage pipe, diameter 30-50 cm	0 m	0 m	4 m
Length of sewage pipe, diameter 30-50 cm needs repair/rehabilitation	0 m	0 m	0 m
Total length of sewage pipe, diameter of pipe 60-100 cm	0 m	38 m	0 m
Length of newly constructed sewage pipe, diameter 60-100 cm	0 m	0 m	0 m
Length of sewage pipe, diameter 60-100 cm needs repair/rehabilitation	0 m	0 m	0 m
Sewage pipe, diameter of pipe over 100 cm	0 m	0 m	0 m
Length of newly constructed sewage pipe, diameter over 100 cm	0 m	0 m	0 m
Length of sewage pipe, diameter over 100 cm needs repair/rehabilitation	0 m	0 m	0 m

2.3 Drainage and Bridges

Construction Type	2006		2007		2008	
	place(s)	Length	place(s)	Length	place(s)	Length
Single pipe culvert	3	15m	8	38 m	16	77 m
Double-pipe culvert	4	19m	4	20 m	18	61 m
Box pipe culvert	0	0m	0	0m	0	0 m
Wooden bridge	11	97m	13	130m	12	229 m
Concrete bridge	1	36m	0	0m	0	0 m
Bale bridge	2	156m	2	156m	0	0 m
Spillway construction	0	0m	0	0m	0	0 m

2.4 Services in the District

Descriptions	Number of places by year		
	2006	2007	2008
Public			
Electricity generating stations	31	31	0
Health clinics	0	0	0
Private			
Bicycle and motorcycle repair places	11	14	21
Agricultural machinery, tools and equipment repair places	5	3	2
Electronic tool repair places	0	2	2
Battery-charging services	45	57	53
Handicraft places, wooden furniture and forest by-products	5	5	6
Other handicraft places (excluding furniture)	3	0	0
Small-scale services (hairstylist, phone service, massage,	48	20	3

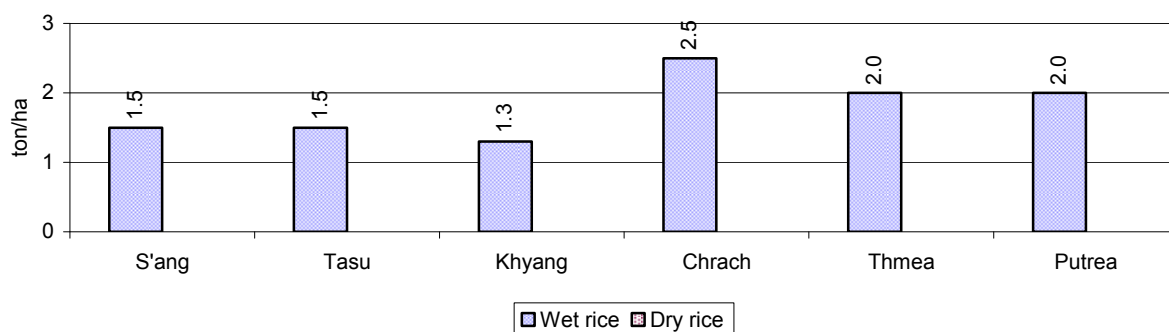
Descriptions	Number of places by year		
	2006	2007	2008
Karaoke, etc)			
Small-scale food shop businesses (Food, groceries, drink shop, etc)	10	10	3
Small-scale rice mills	218	247	255
Medium or large-scale rice mills	0	0	0
Small-scale markets	2	0	0
Large-scale market	0	2	0
Alcohol refinery places	7	0	2
Pharmacies and small drug stores	0	0	0
Hotels	0	0	0
Guest houses	2	2	0
Restaurants	0	0	0
Gasoline stations	1	1	0

2.5 Agriculture

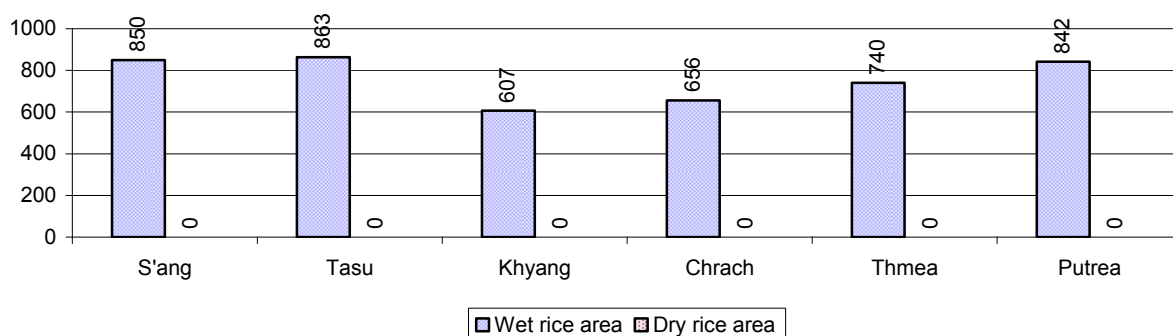
2.5.1 Rice cultivation in the District over 3 years

Description	2006	2007	2008
Total dry rice land area	0 ha	0 ha	0 ha
Actual dry rice cultivation area	0 ha	0 ha	0 ha
% actual cultivation to total land	-%	-%	-%
Total dry rice production	- tonne(s)	- tonne(s)	- tonne(s)
Average dry rice yield	- tonne(s)/ha	- tonne(s)/ha	- tonne(s)/ha
Total wet rice land area	3,621 ha	4,403 ha	4,564 ha
Actual wet rice cultivation area	3,621 ha	4,403 ha	4,558 ha
% actual cultivation to total land	100 %	100%	100%
Total wet rice production	8,147.25 tonne(s)	10,273.67 tonne(s)	8,204.22 tonne(s)
Average wet rice yield	2.3 tonne(s)/ha	2.3 tonne(s)/ha	1.8 tonne(s)/ha
Total intensive rice land area	0 ha	0 ha	0 ha
Actual intensive rice cultivation area	- ha	- ha	- ha
Average intensive rice yield	- tonne(s)/ha	- tonne(s)/ha	- tonne(s)/ha
Actual upland rice cultivation area	91 ha	116 ha	86 ha
Total upland rice production	130 tonne(s)	168 tonne(s)	101 tonne(s)
Average upland rice yield	1.4 tonne(s)/ha	1.5 tonne(s)/ha	1.2 tonne(s)/ha

2.5.2 Estimated wet and dry Season Rice Yield in tonne(s)/Ha, by Commune, in 2008



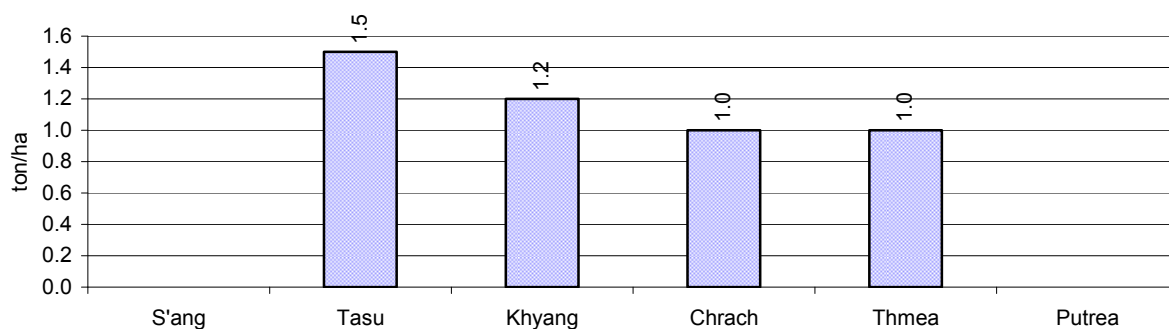
2.5.3 Cultivated wet and dry Season Rice areas in Ha, by Commune, in 2008



2.5.4 Estimated intensive Rice Yields in tonnes/Ha, by Commune, for 2008

There were no estimated intensive rice yields in this District in 2008

2.5.5 Estimated upland Rice Yield in tonnes/Ha, by Commune, for 2008

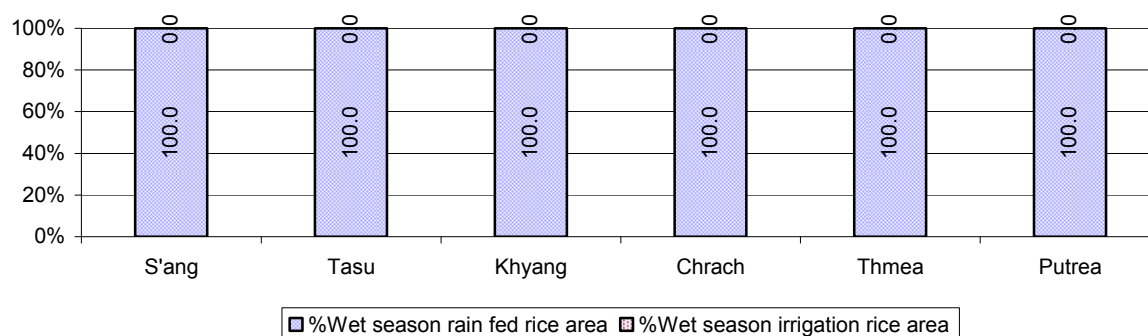


2.5.6 Wet season Rice irrigation across 3 years

Description		2006 %	2007 %	2008	
				%	Number
Total area of wet season rain fed rice land		90%	100%	100 %	4,558 ha
Percentage of wet season rice land that is irrigated; and for 2008 area in Ha		10 %	0 %	0 %	0 ha
Where	Area irrigated from canal/dam	0 %	100 %	- %	0 ha
	Area irrigated from river, stream, lake, natural pond	100 %	0 %	- %	0 ha
	Area irrigated from drilled well	0 %	0 %	- %	0 ha
	Area irrigated from dug pond	0 %	0 %	- %	0 ha

2.5.7 Water sources for wet Season Rice Cultivation, by Commune, in 2008

This chart shows the percentage of wet season rice cultivation receiving water from rain (natural) and from irrigation.



2.5.8 Access to Irrigation

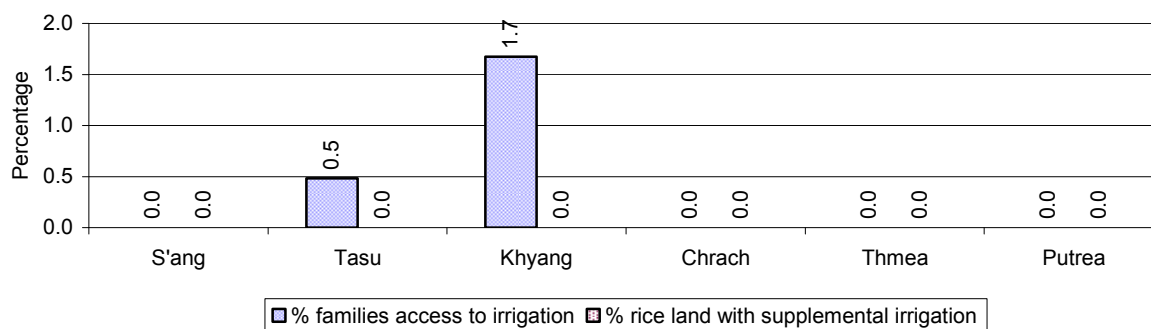
Description	2006 %	2007 %	2008	
			%	Number
Families who have access to irrigation water	0%	0%	0%	15 families
Families who have irrigation wells	0%	1%	0%	3 families

Note: Calculated against the total number of families are rice farmers

2.5.9 Number of Irrigation Wells over 3 years

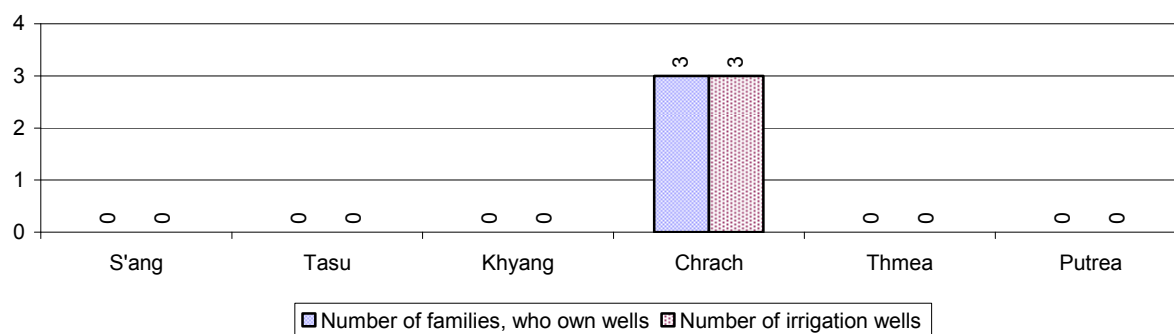
Description	2006	2007	2008
Number of irrigation wells	0 wells	50 wells	3 wells

2.5.10 Percentage of Families with access to (supplemental) Irrigation for wet Season Rice cultivation, by Commune, in 2008



Note: % of families, with access to irrigation is calculated against the total number of families, whose main occupation is rice farming. Irrigated wet rice land area is calculated against the total actual wet rice land cultivated areas

2.5.11 Irrigation Wells, by Commune, in 2008

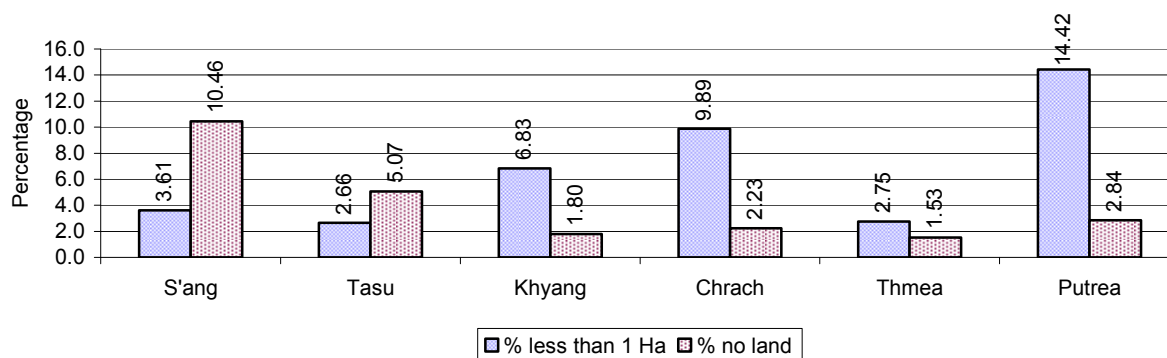


2.5.12 Farmers owning less than one hectare of Rice Land

Description	2006	2007	2008	
	%	%	%	Number
Families who have less than one hectare of rice land	14%	19%	8%	305 families
Families who do not own any rice land	7%	4%	4%	142 families

Note: Calculated on basis of total number of families who are rice farming

2.5.13 Percentage of Farmers with less than one Hectare or no Rice Land, by Commune, in 2008

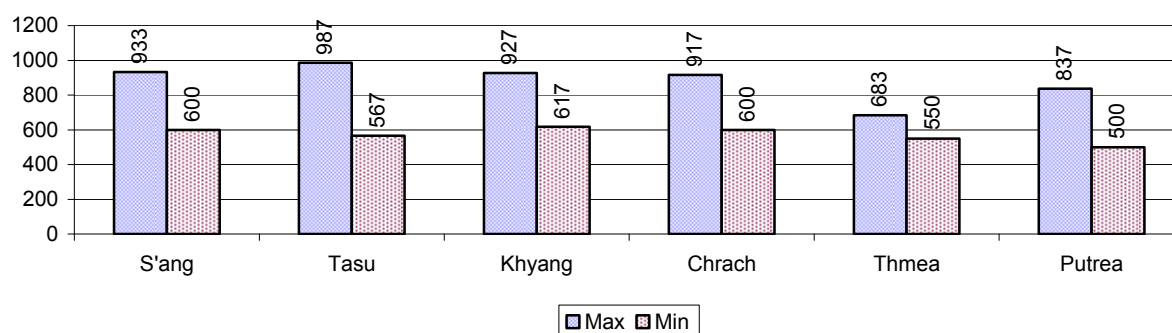


Note: Calculated on basis of total number of families who are rice farming

2.5.14 Average farm-gate Prices of Rice, over 3 years

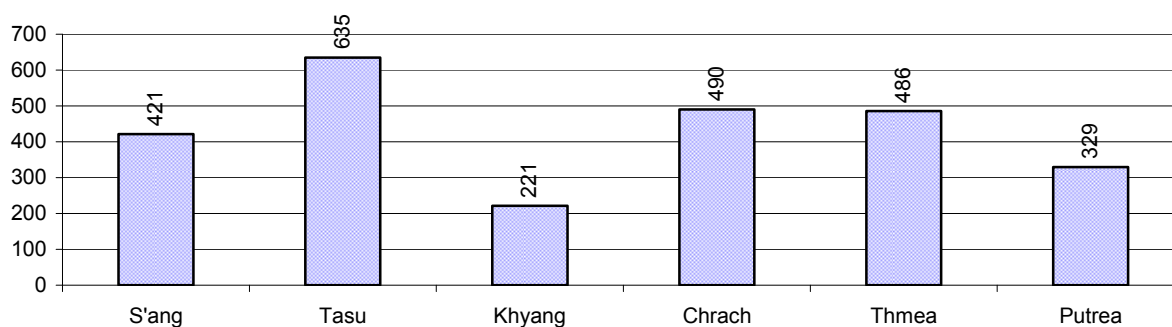
Description	2006	2007	2008
Maximum average farm gate price	506 Riels/Kg	725 Riels/Kg	881 Riels/Kg
Minimum average farm gate price	397 Riels/Kg	560 Riels/Kg	572 Riels/Kg
Average farm gate price	451 Riels/Kg	642 Riels/Kg	726 Riels/Kg
Average rice production per person	442 Kg/person	544 Kg/person	408 Kg/person

2.5.15 Minimum and maximum farm-gate Prices of Rice in Riel/kg, by Commune, in 2008



2.5.16 Production of Paddy in Kgs/Person, by Commune, in 2008

This table shows how much paddy (harvested rice) is produced in a year in a commune, in kgs per person.

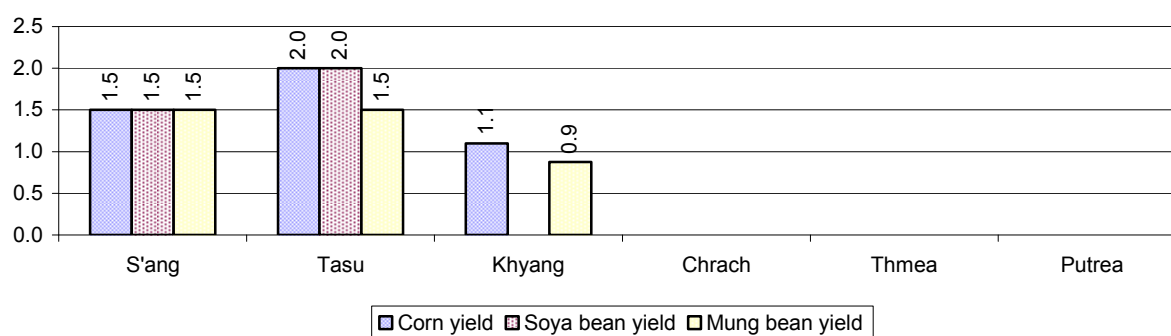


2.5.17 Production of other Crops, over 3 years

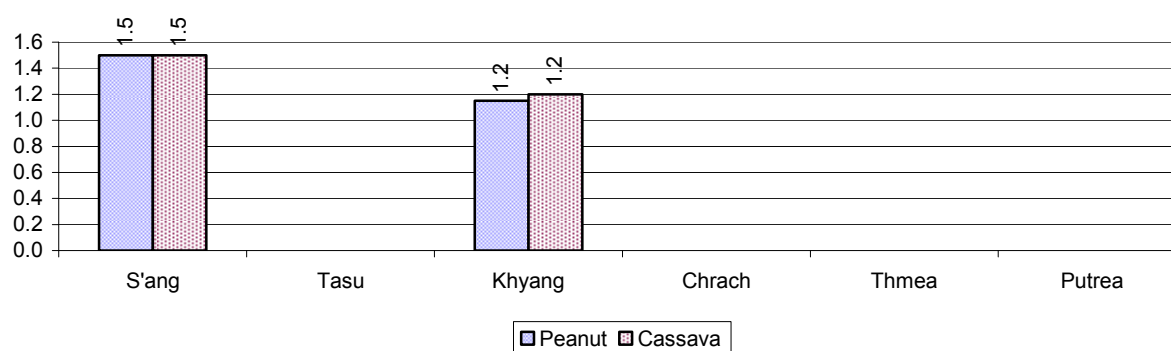
Crops	2006	2007	2008
Corn cultivation area	28 ha	12 ha	13 ha
Estimated corn yield	1.5 tonne(s)/ha	1.9 tonne(s)/ha	1.5 tonne(s)/ha
Estimated corn production	42 tonne(s)	23 tonne(s)	20 tonne(s)
Soya bean cultivation area	15 ha	15 ha	9 ha
Estimated Soya bean yield	3.0 tonne(s)/ha	3.0 tonne(s)/ha	1.8 tonne(s)/ha
Estimated Soya bean production	45 tonne(s)	45 tonne(s)	16 tonne(s)
Mungbean cultivation area	2 ha	7 ha	11 ha
Estimated Mungbean yield	1.5 tonne(s)/ha	1.5 tonne(s)/ha	1.3 tonne(s)/ha
Estimated Mungbean production	3 tonne(s)	11 tonne(s)	14 tonne(s)

Crops	2006	2007	2008
Peanut cultivation area	2 ha	2 ha	3 ha
Estimated Peanut yield	1.5 tonne(s)/ha	1.5 tonne(s)/ha	1.3 tonne(s)/ha
Estimated Peanut production	3 tonne(s)	3 tonne(s)	4 tonne(s)
Cassava cultivation area	1 ha	3 ha	12 ha
Estimated Cassava yield	3.0 tonne(s)/ha	2.0 tonne(s)/ha	1.4 tonne(s)/ha
Estimated Cassava production	3 tonne(s)	6 tonne(s)	16 tonne(s)
Sweet potatoes cultivation area	5 ha	7 ha	2 ha
Estimated Sweet potatoes yield	3.0 tonne(s)/ha	2.0 tonne(s)/ha	1.3 tonne(s)/ha
Estimated Sweet potatoes production	15 tonne(s)	14 tonne(s)	3 tonne(s)
Sesame cultivation area	0 ha	0 ha	1 ha
Estimated Sesame yield	- tonne(s)/ha	- tonne(s)/ha	1.4 tonne(s)/ha
Estimated Sesame production	- tonne(s)	- tonne(s)	1 tonne(s)

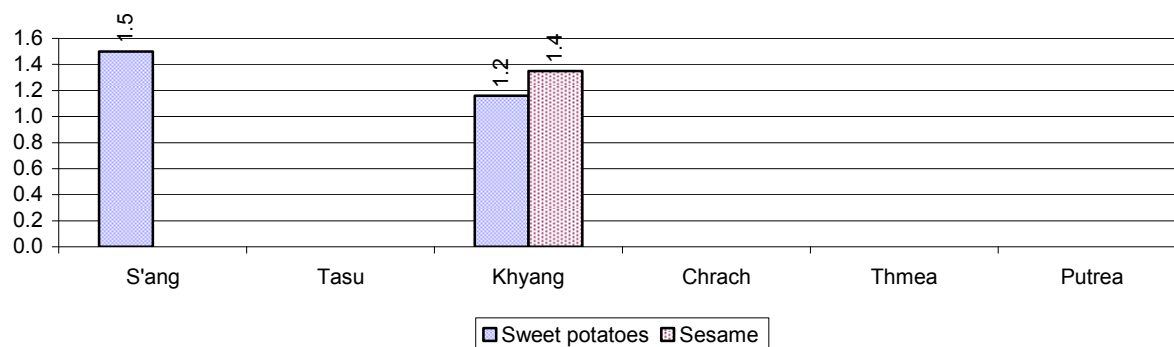
2.5.18 Yields of Corn, Soya beans and Mungbeans in tonne(s)/ha, by Commune, in 2008



2.5.19 Yields of Peanuts and Cassava in tonne(s)/ha by Commune, in 2008



2.5.20 Yields of Sweet Potatoes and Sesame in tonne(s)/ha, by Commune, in 2008



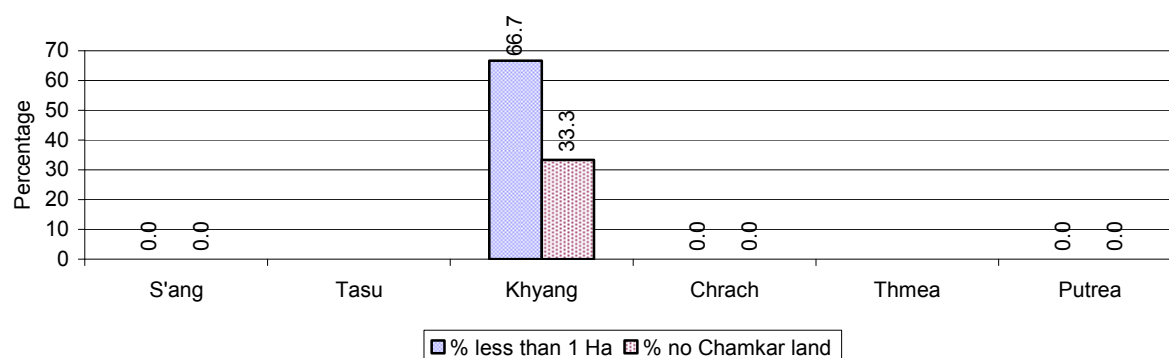
2.5.21 Percentage Farmers who own less than 1 Ha or no Chamkar land

Description	2006	2007	2008	
	%	%	%	Number
Families, who own less than 1ha of Chamkar land	0%	21%	11%	2 families
Families, with no Chamkar land	0%	0%	5%	1 families

Note 1: Calculated as a percentage of the total number of families whose main occupation is Chamkar (not rice) farming

Note 2: Chamkar land is no-rice land, i.e. other crops

2.5.22 Percentage Farmers owning less than 1 ha or no Chamkar land, by Commune, in 2008



Note: Percentage is calculated among families, who Chamkar farm as a main occupation, not the total population of the commune.

2.5.23 Percentage of Families raising Cattle/Buffalo, over 3 years

Description	2006	2007	2008	
	%	%	%	Number
Families raising cattle/buffalo	83%	77%	84%	3,465 families
Families raising cattle/buffalo as labor forces	71%	62%	68%	2,787 families

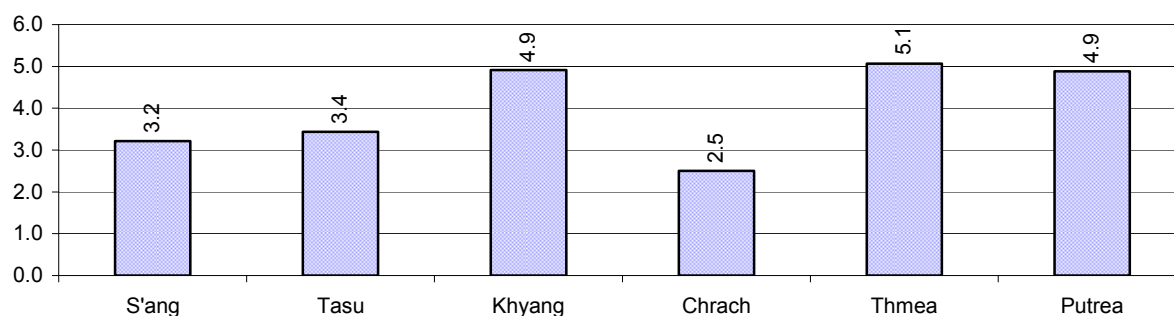
Note: Calculated against the total number of families.

2.5.24 Number of Cattle/buffalo being raised, over 3 years

Description	2006	2007	2008
Total number of cattle/buffalo	12,236 head(s)	15,958 head(s)	14,684 head(s)
Average cattle/buffalo per families	3.9 head(s)/families	5.2 head(s)/families	4 head(s)/families

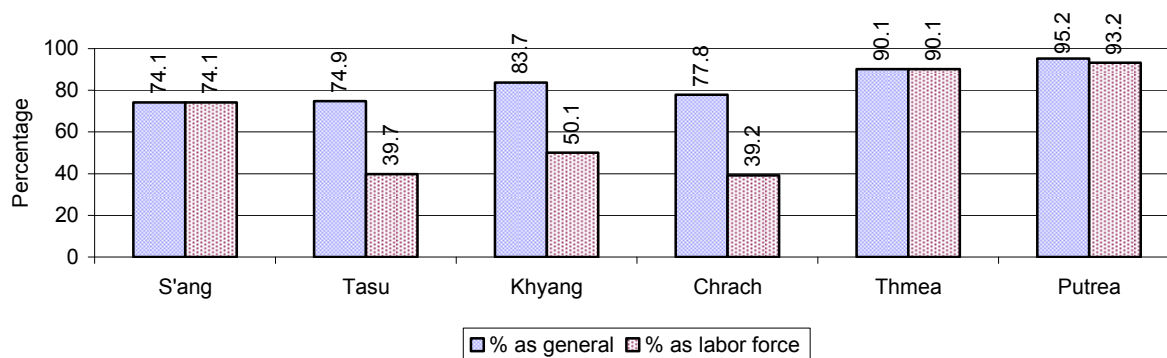
Note: Calculated by dividing total number of cattle/buffalo by total number of cattle/buffalo raising families

2.5.25 Average number of Cattle/Buffalo per Family, by Commune, in 2008



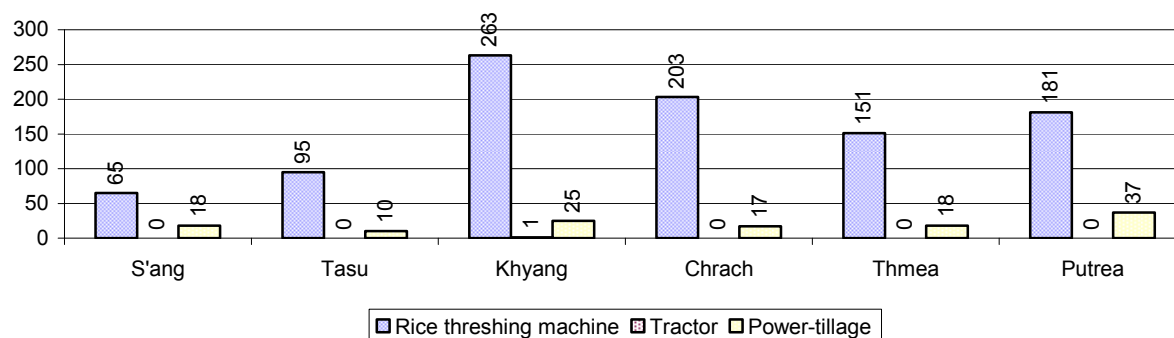
Note: Calculated by dividing total number of cattle/buffalo by total number of cattle/buffalo raising families

2.5.26 Percentage Families raising Cattle/Buffalo, for general and labor purposes in 2008, by Commune



Note: Calculated using the total number of families raising cattle/buffalo against the total number of families.

2.5.27 Type and number of agricultural Machines, by Commune, in 2008

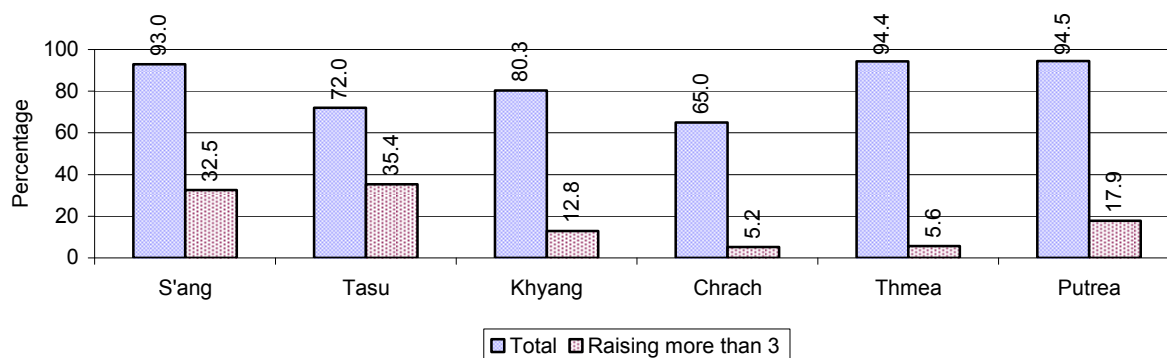


2.5.28 Livestock-producing Households over 3 years

Description	2006 %	2007 %	2008	
			%	Number
Total number of families raising pigs	84%	68%	85%	3,475 families
number of families raising more than 3 pigs	21%	14%	17%	691 families
Total number of families raising chickens	91%	79%	85%	3,473 families
number of families raising more than 3 chickens	67%	55%	59%	2,433 families
Total number of families raising ducks	20%	19%	19%	788 families
number of families raising more than 5 ducks	12%	7%	10%	394 families
Total number of families raising goats or sheep	0%	0%	0%	0 families
Total number of families raising horses	0%	0%	0%	0 families

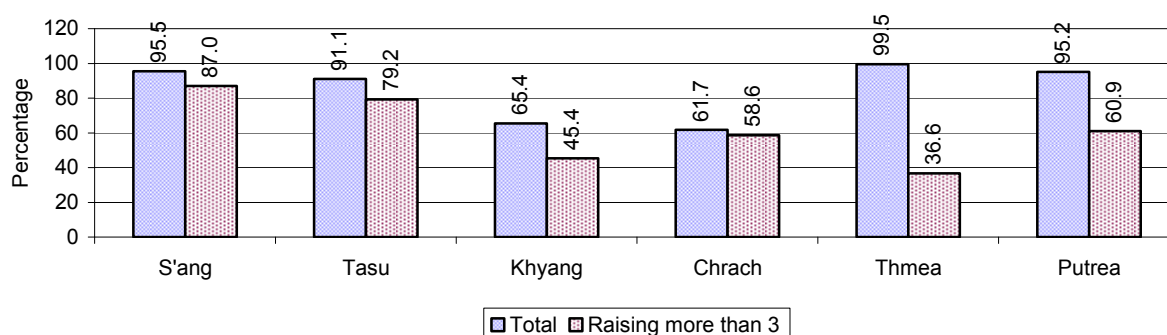
Note: Calculated against the total number of families

2.5.29 Percentage Families raising Pigs, by Commune, in 2008



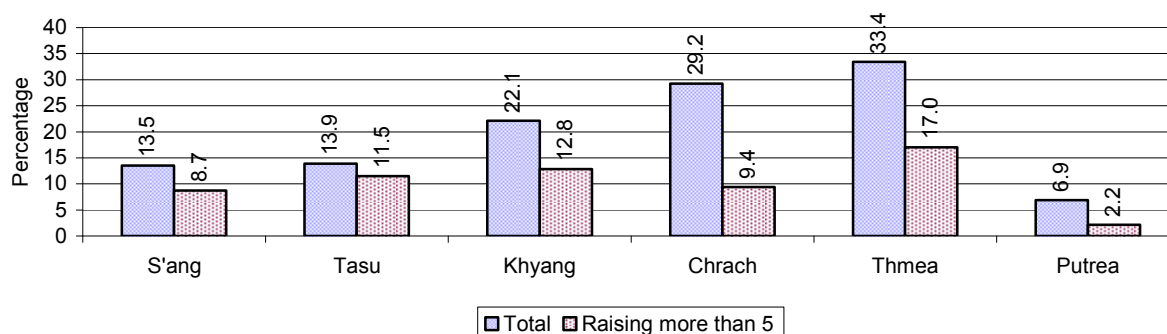
Note: Calculated against the total number of families in the commune

2.5.30 Percentage Families raising Chickens, by Commune, in 2008



Note: Calculated against the total number of families in the commune

2.5.31 Percentage Families raising Ducks, by Commune, in 2008



Note: Calculated against the total number of families in the commune

2.5.32 Percentage Families raising Horses, Goats or Sheep, by Commune, in 2008

No families were raising this type of livestock in this District in 2008

Note: Calculated against the total number of families in the commune

2.5.33 Livestock Farms over 3 years

Description	2006	2007	2008
Number of cattle/buffalo farms	0 farm(s)	0 farm(s)	0 farm(s)
Number of pig farms	0 farm(s)	0 farm(s)	0 farm(s)
Number of goat/sheep farms	0 farm(s)	0 farm(s)	0 farm(s)
Number of chicken farms	0 farm(s)	0 farm(s)	0 farm(s)
Number of duck farms	0 farm(s)	0 farm(s)	0 farm(s)

2.5.34 Number Livestock Farms, by Commune in 2008

There were no farms of this type in this District in 2008

Note: Number of farms are recorded by the village chief, not by counting number of livestock in each farm

2.5.35 Number Chicken and Duck Farms, by Commune, for 2008

There were no farms of this type in this District in 2008

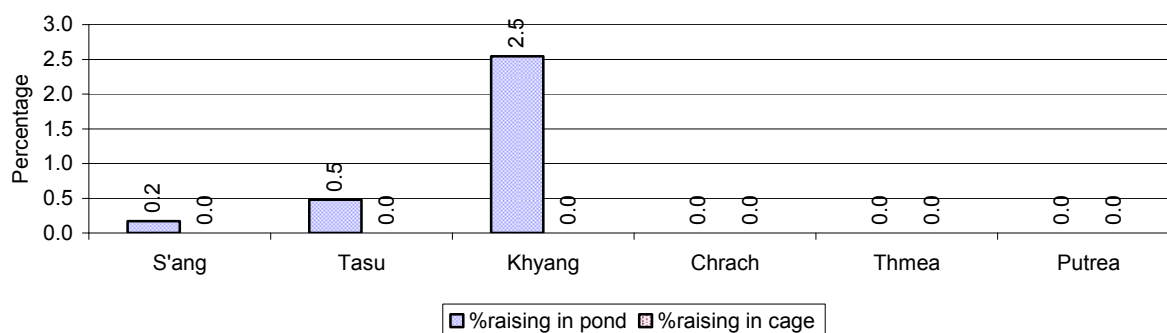
Note: Number of farm places recorded by village chief, not by counting number of livestock in each farm

2.5.36 Families raising Fish over 3 years

Description	2006	2007	2008
Total number of families raising fish	4 families	3 families	23 families
% families raising fish	0%	0%	1%
Number families raising fish in pond	4 families	3 families	23 families
% families raising fish in pond	0%	0 %	1%
Number fish pond	4 pond(s)	3 pond(s)	23 pond(s)
No. of ponds per family	1.0 pond/families	1.0 pond/families	1.0 pond/families
Number of families raising fish in cage	0 families	0 families	0 families
%families raising fish in cage	0 %	0 %	0%
Number of fish cage	0 cage(s)	0 cage(s)	0 cage(s)
No. of fish cage per family	- cage /families	- cage /families	- cage /families

Note: % of families raising fish or fish in ponds or cages is calculated a percentage of the total number of families.

2.5.37 Percentage of Families raising Fish, by Commune, in 2008



Note: Calculated as a percentage of the total number of families in the commune.

2.5.38 Shrimp and Prawn Farming over 3 years

Description	2006	2007	2008
Number of families raising shrimps	0 families	0 families	0 families
% Families raising shrimps	0%	0%	0%
Number of shrimp ponds	0 pond	0 pond	0 pond
Total area raising shrimps	0 ha	0 ha	0 ha
Area per family	-ha/families	-ha/families	-ha/families
Number of families raising prawns	0 families	0 families	0 families
% families raising prawns	0%	0%	0%
Number prawn ponds	0 pond	0 pond	0 pond
Ponds per families	- pond/families	-pond/families	-pond/families
Number of prawn cages	0 cage	0 cage	0 cage
Cages per families	0 cage /families	0 cage /families	0 cage /families

Note: Percentage of families raising either prawns or shrimp is calculated against the number of families, who do aquaculture farming, NOT the total population.

2.5.39 Numbers of Families raising Shrimps and number of Shrimp Ponds, by Commune, in 2008

There were none of these in this District in 2008

2.5.40 Number of Families raising Prawn and Number of Prawn Ponds/Cages, by Commune, in 2008

There were none of these in this District in 2008

3 Social Aspects

3.1 Education

3.1.1 Kindergarten in the District over 3 years

Description	2006	2007	2008
Number of community kindergarten schools	0 school(s)	0 school(s)	0 school(s)
Number of community kindergarten class rooms	0 room(s)	0 room(s)	0 room(s)
Number of community kindergarten classes	0 class(es)	0 class(es)	0 class(es)
Number of community kindergarten teachers	0 person(s)	0 person(s)	0 person(s)
Number of women community kindergarten teachers	0 women	0 women	0 women
Number of state and private kindergarten schools	1 school(s)	0 school(s)	1 school(s)
Number of state and private kindergarten class rooms	1 room(s)	0 room(s)	0 room(s)
Number of state and private kindergarten classes	1 class(e)s	0 class(es)	1 class(es)
Number of state and private kindergarten teachers	1 person(s)	1 person(s)	1 person(s)
Number of women state and private kindergarten teachers	1 women	1 women	1 women

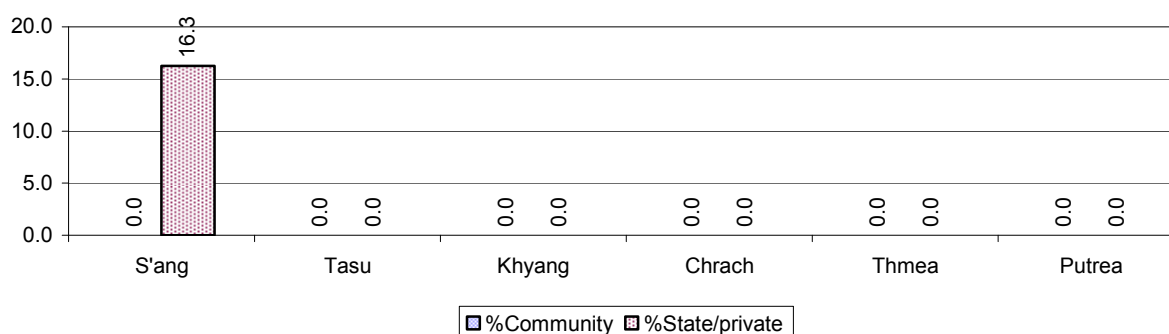
3.1.2 Percentage enrolment at Kindergarten level over 3 years

This table shows the percentage of the total 3-5 year old population attending kindergarten.

Description	2006 %	2007 %	2008	
			%	Number
Total percentage of children, 3-5 yrs, go to kindergarten	4%	1%	2%	40 person(s)
Percentage of children, 3-5 yrs, go community kindergarten	0%	0%	0%	0 person(s)
Percentage children, 3-5 yrs, go state/private kindergarten	4%	1%	2%	40 person(s)

Note: Calculated against the total for that age group

3.1.3 Percentage of Children 3-5 yrs attending Kindergarten, by Commune, in 2008



3.1.4 Basic Education over 3 years

Primary School

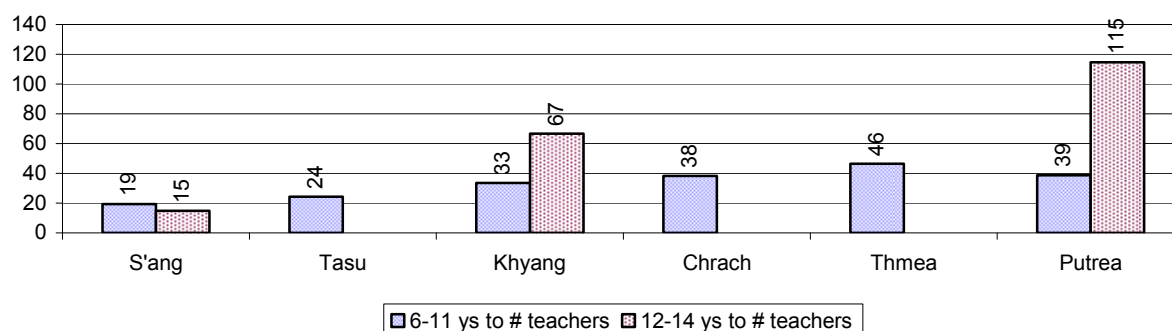
Description	2006	2007	2008
Number of primary schools	13 school(s)	17 school(s)	24 school(s)
Number of primary school rooms	53 room(s)	58 room(s)	84 room(s)
Number of primary classes	120 class(es)	90 class(es)	114 class(es)
Number of primary teachers	68 person(s)	88 person(s)	96 person(s)
Ratio of children 6-11 yrs to school	246	193	133
Ratio of children 6-11 yrs to school room	60	57	38
Ratio of children 6-11 yrs to class	27	36	28
Ratio of children 6-11 yrs to teacher	47	37	33

Note: According to education norm, children 6-11 yrs should attend primary school, while 12-14 yrs should be in lower secondary school, but in reality this varies.

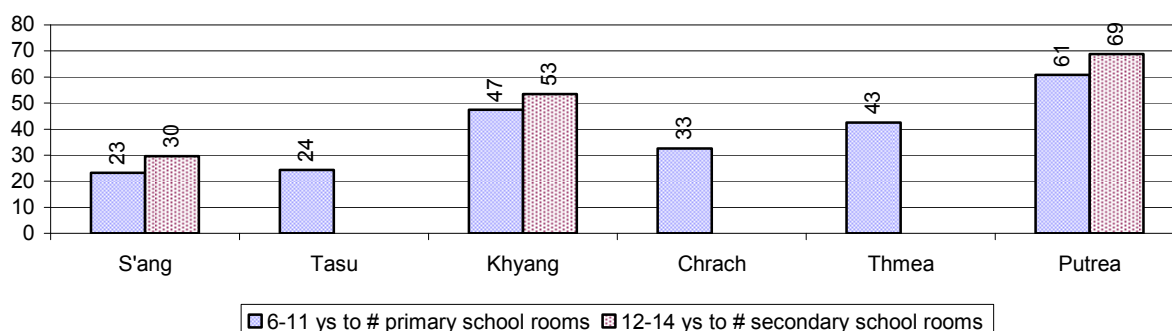
Lower Secondary School

Description	2006	2007	2008
Number of lower secondary schools	2 school(s)	3 school(s)	4 school(s)
Number of lower secondary school rooms	5 room(s)	16 room(s)	15 room(s)
Number of lower secondary classes	10 class(es)	18 class(es)	11 class(es)
Number of lower secondary teachers	9 person(s)	16 person(s)	17 person(s)
Ratio children 12-14 yrs to school	748	518	375
Ratio of children 12-14 yrs to school room	299	97	100
Ratio of children 12-14 yrs to class	150	86	136
Ratio of children 12-14 yrs to teacher	166	97	88

3.1.5 Ratio of 6-11 year old and 12-14 year old Children to number of Teachers, by Commune, in 2008



3.1.6 Ratio of 6-11 year old and 12-14 year old Children to number of School Rooms, by Commune, in 2008



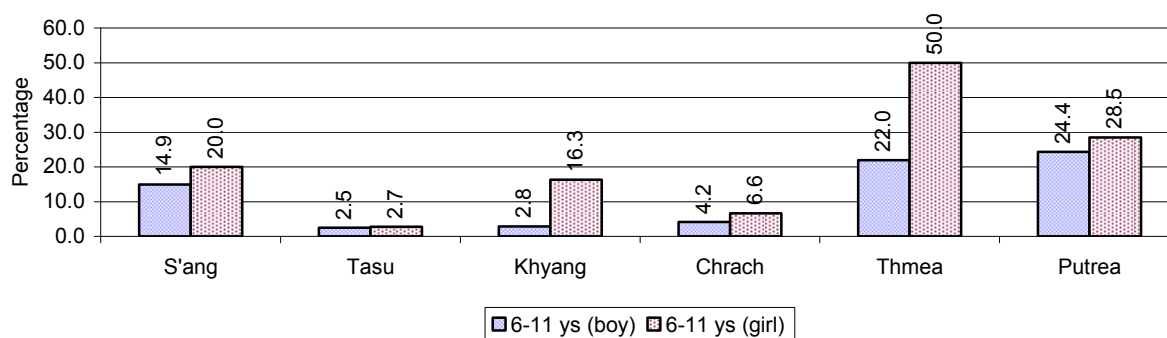
3.1.7 Enrolment status at Primary Level over 3 years

Description	2006 %	2007 %	2008	
			%	Number
Total children aged 6-11 years old	17%	17%	16%	3,198 person(s)
Total children aged 6-11 who are in school	86%	79%	82%	2,628 person(s)
Total children aged 6-11 who are not in school	14%	21%	18%	570 person(s)
Total girls aged 6-11 years old	16%	17%	16%	1,644 person(s)
Total girls aged 6-11 who are in school	83%	73%	78%	1,276 person(s)
Total girls aged 6-11 who are not in school	17%	27%	22%	368 person(s)
Total boys aged 6-11 years old	18%	18%	15%	1,554 person(s)
Total boys aged 6-11 who are in school	89%	84%	87%	1,352 person(s)
Total boys aged 6-11 who are not in school	11%	16%	13%	202 person(s)

Note 1: Percentage is calculated on the basis of the total number of children within 6-11 year age group for the first 3 rows and for the total girls and the total boys aged 6-11 yrs.

Note 2: Number of girls aged 6-11 who are in & not in school is calculated against the total number of girls aged 6-11 yrs. Number boys, 6-11 yrs who are in & not in school are calculated against the total number of boys aged 6-11 yrs.

3.1.8 Percentage of 6-11 year old Children not in School, by Commune, in 2008



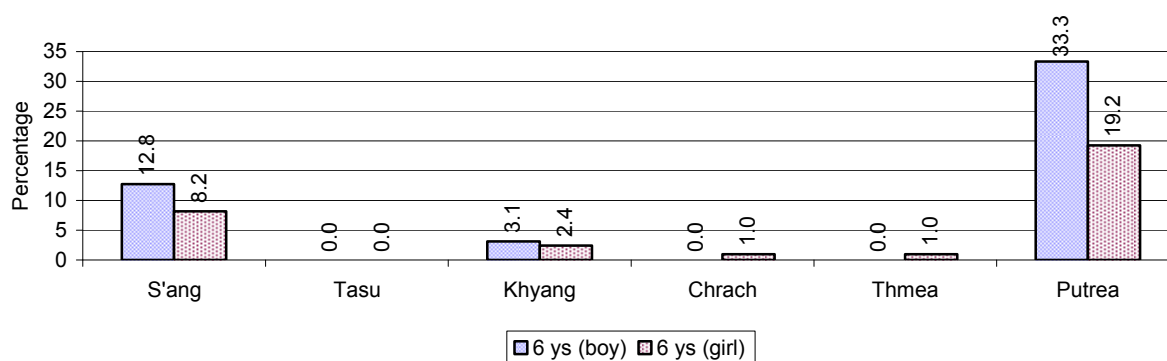
Note: calculated on the basis of the total number of children within 6-11 year age group in the commune.

3.1.9 Enrolment of 6 year old Children over 3 years

Description	2006 %	2007 %	2008	
			%	Number
Total % and number of children aged 6 years old	5%	4%	4%	763 person(s)
Total % of children aged 6 years old in school	76%	74%	87%	662 person(s)
Total % of children aged 6 years old not in school	24%	26%	13%	101 person(s)

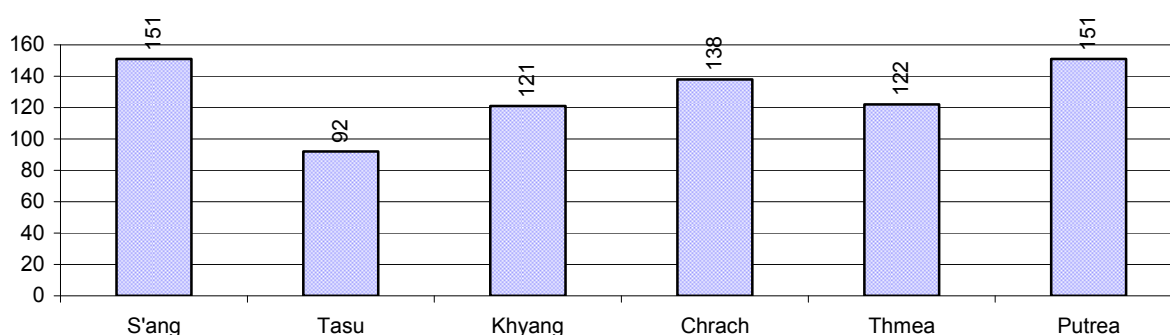
Note: First row calculated as a percentage of total population. Second and third row calculated as a percentage of the total number of 6 year olds.

3.1.10 Percentage of 6 year old Children not in School, by Commune, in 2008



Note: Calculated as a percentage of total 6 year old population

3.1.11 Number of 5 year old Children in each Commune in 2008

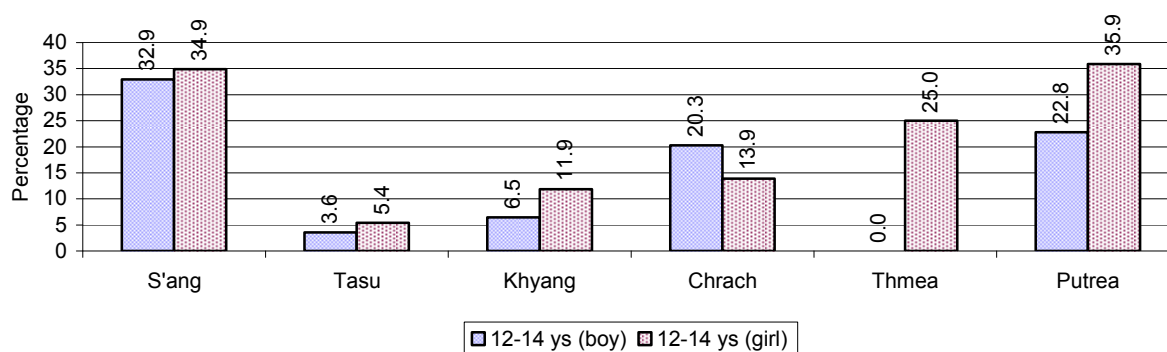


3.1.12 Enrolment at Lower Secondary Level over 3 years

Description	2006 %	2007 %	2008	
			%	Number
Total children aged 12-14 years old	8%	8%	7%	1,498 person(s)
Children aged 12-14 years old in school	88%	81%	82%	1,233 person(s)
Children aged 12-14 years old not in school	12%	19%	18%	265 person(s)
Total girls aged 12-14 years old	8%	8%	7%	755 person(s)
Girls aged 12-14 years old in school	87%	79%	78%	592 person(s)
Girls aged 12-14 years old not in school	13%	21%	22%	163 person(s)
Total boys aged 12-14 years old	8%	9%	7%	743 person(s)
Boys aged 12-14 years old in school	89%	83%	86%	641 person(s)
Boys aged 12-14 years old not in school	11%	17%	14%	102 person(s)

Note: Percentage is calculated on the basis of number of the total number of children within 12-14 yrs group, except for the first row of each section which is calculated on the basis of the total population.

3.1.13 Percentage of 12-14 year olds not in School, by Commune, in 2008



Note: Calculated as a percentage of the total 12-14 year old population in each commune

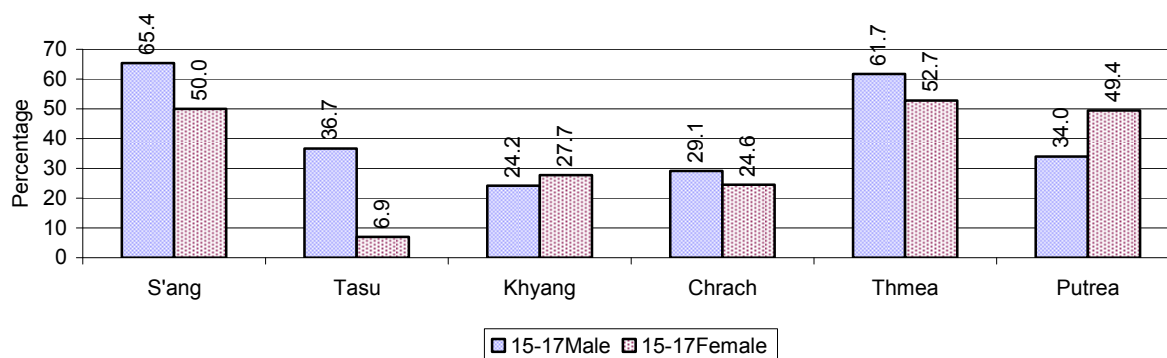
3.1.14 Upper Secondary Schools over 3 years

Description	2006	2007	2008
Number of upper secondary schools	1 school(s)	0 school(s)	1 school(s)
Number of upper secondary school rooms	0 room(s)	0 room(s)	0 room(s)
Number of upper secondary classes	2 class(es)	0 class(es)	3 class(es)
Number of upper secondary teachers	2 person(s)	2 person(s)	2 person(s)
Ratio of 15-17 yr olds to number of school	1,265	N/A	1,451
Ratio of 15-17 yr olds to number of school room	N/A	N/A	N/A
Ratio of 15-17 yr olds to number of classes	633	N/A	484
Ratio of 15-17 yr olds to number of teacher	633	639	726

3.1.15 Enrolment of 15-17 year old teenagers over 3 years

Description	2006	2007	2008
Number of teenage, 15-17 years old	1,265 person(s)	1,278 person(s)	1,451 person(s)
Number of teenage, 15-17 years old, who are not studying	485 person(s)	452 person(s)	592 person(s)
Percentage of teenage, 15-17 years old not studying	38%	35%	41%

3.1.16 Percentage of 15-17 year old Teenagers not at School, by Commune, in 2008



3.1.17 Literacy Classes as of 2008

Literacy classes	Organized by:		Other Program(s)	Total
	PDoEYS	NGOs		
Number of On-going literacy classes	0 class(es)	0 class(es)	0 class(es)	0 class(es)
Number of literacy students in on-going classes	0 person(s)	0 person(s)	0 person(s)	0 person(s)
Completed literacy class(es)	0 classes	0 classes	0 classes	0 classes
Number of literacy students that have completed literacy classes	0 person(s)	0 person(s)	0 person(s)	0 person(s)
Number of students that passed	0 person(s)	0 person(s)	0 person(s)	0 person(s)

3.1.18 Number of on-going and completed Literacy Classes, by Commune, in 2008

There were no classes in this District in 2008

3.1.19 Students of on-going & completed Literacy Classes, by Commune, in 2008

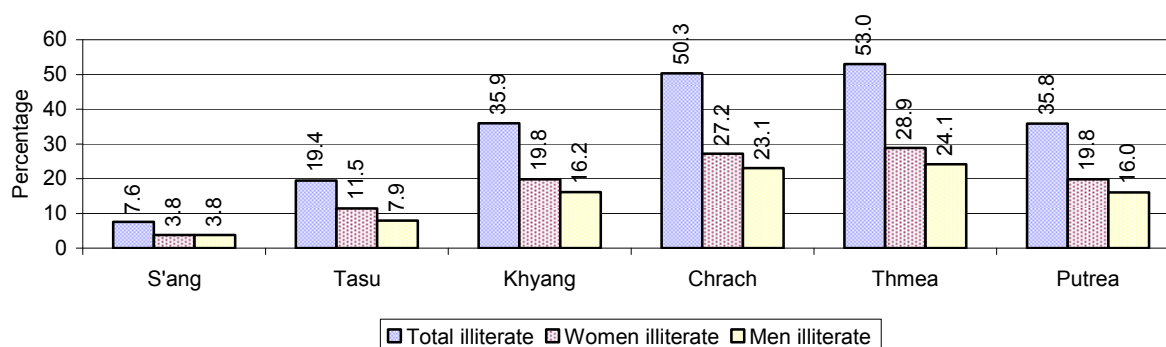
There were no students who had taken or were taking literacy classes in this District in 2008

3.1.20 Percentage of illiterate People between 15-60, over 3 years

Illiteracy Status	2006 %	2007 %	2008	
			%	Number
Illiterate people, 15-60 years old	31%	35%	34%	3,871 person(s)
Illiterate females, 15-60 years old	18%	19%	19%	2,121 person(s)
Illiterate people, 15-17 years old	23%	22%	25%	370 person(s)
Illiterate females, 15-17 years old	11%	11%	13%	188 person(s)
Illiterate people, 18-24 years old	30%	34%	29%	793 person(s)
Illiterate females, 18-24 years old	16%	17%	15%	413 person(s)
Illiterate people, 25-60 years old	34%	39%	39%	2,708 person(s)
Illiterate females, 25-60 years old	20%	21%	22%	1,520 person(s)

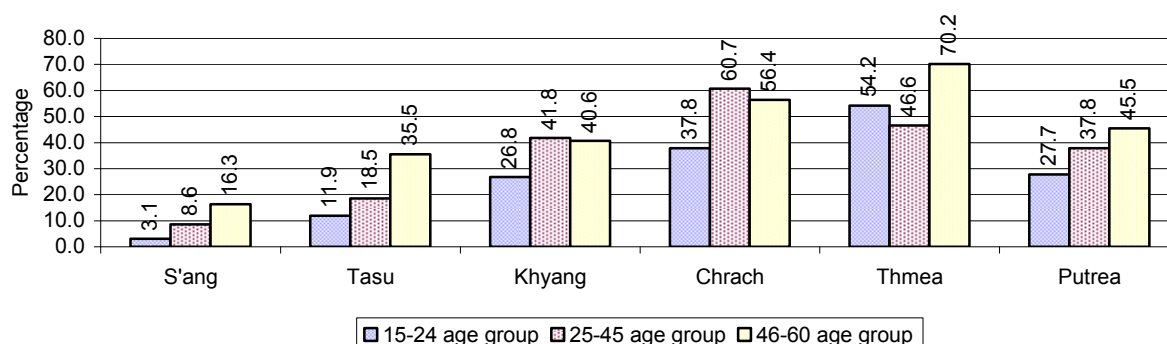
Note: Percentage is calculated on the basis of number of people in age each group.

3.1.21 Percentage illiterate People among 15-60 yrs old, by Commune, in 2008



Note: Percentages are calculated on the basis of number of people in that age group.

3.1.22 Percentage illiterate People for 15-24 yrs, 25-45 yrs and 46-60 yrs, by Commune, in 2008



Note: Percentage of illiterate people in each age group is calculated on the basis of number of people in that age group.

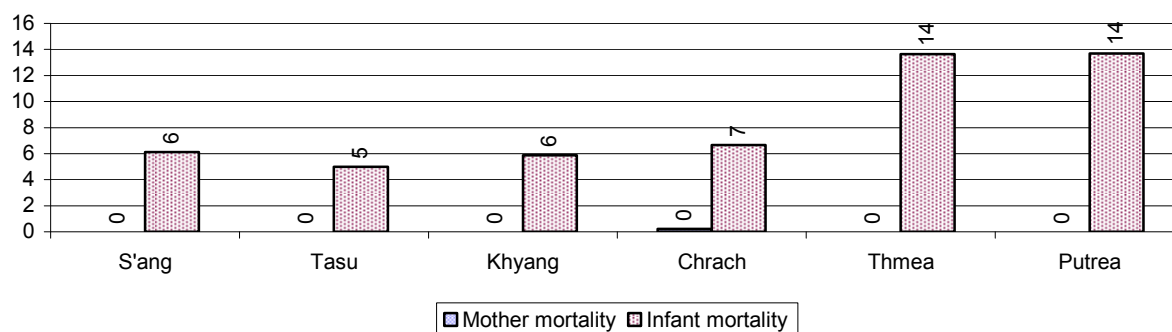
3.2 Health

3.2.1 Health Situation of Women and Children, over 3 years

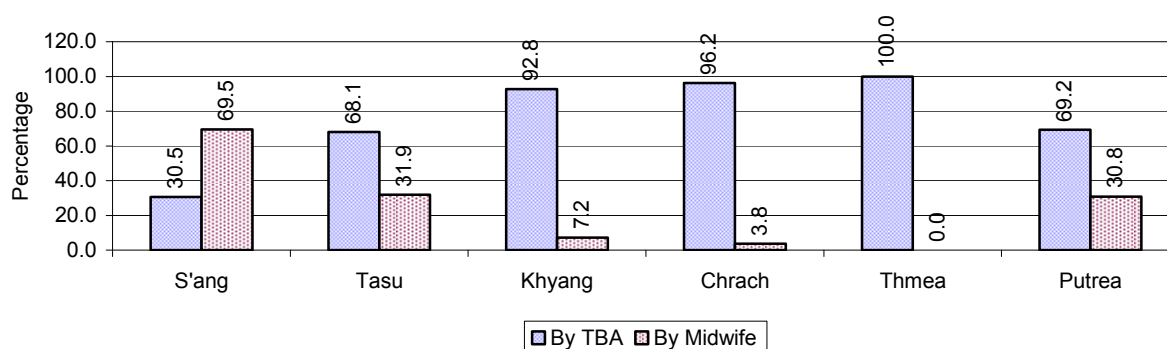
Description	2006	2007	2008
Number families with a birth during the year	446 families	320 families	420 families
Number of women who had their baby delivered by a TBA	399 person(s)	253 person(s)	309 person(s)
Percentage of women who had their baby delivered by a TBA	89 %	79 %	74 %
Number of women who had their baby delivered by a midwife	47 person(s)	67 person(s)	111 person(s)
Percentage of women had their baby delivered by a midwife	11 %	21 %	26 %
Number of mothers who died within 1 month of giving birth	2 person(s)	4 person(s)	1 person(s)
Mothers who died within 1 month of giving birth per 100,000 families having a delivery	448	1,250	238
Number of infants born during the year	403 person(s)	320 person(s)	420 person(s)
Number of Infants who died within 1 month	43 person(s)	22 person(s)	24 person(s)
Infants mortality within 1 month per 1,000 births	107	69	57
Number of children who died below the age of 5.	34 person(s)	45 person(s)	25 person(s)
Number of infants, aged 9-12 months, born during the year	231 person(s)	204 person(s)	250 person(s)
Nr. infants, aged 9-12 months, not receiving full immunization	64 person(s)	17 person(s)	33 person(s)
% of 9-12 months infants, not receiving full immunization	28 %	8 %	13 %

Note: TBA = Traditional Birth Attendant

3.2.2 Mothers dying within 0 days to 1 month of giving Birth and Infants dying within 1 month in 2008, by Commune

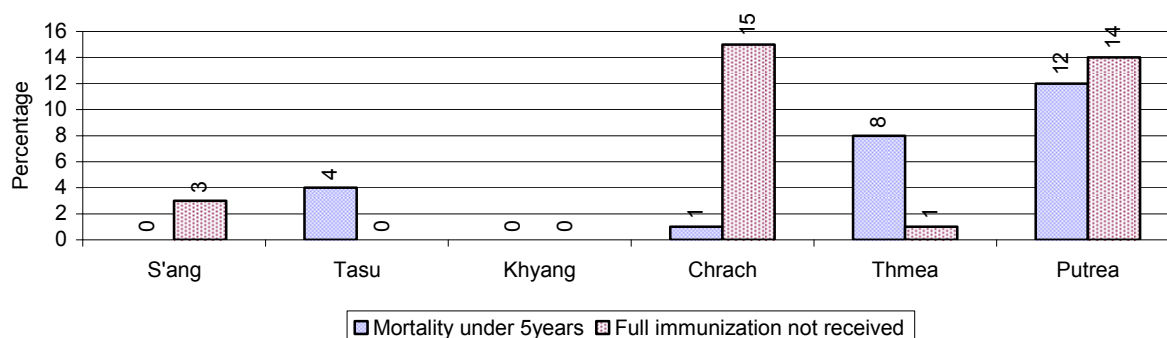


3.2.3 Percentage of Women delivering with a TBA or Midwife, by Commune



Note: Calculated as a percentage of total deliveries

3.2.4 Percentage of Children dying below 5 & of 9-12 months not receiving full Immunization, by Commune, in 2008



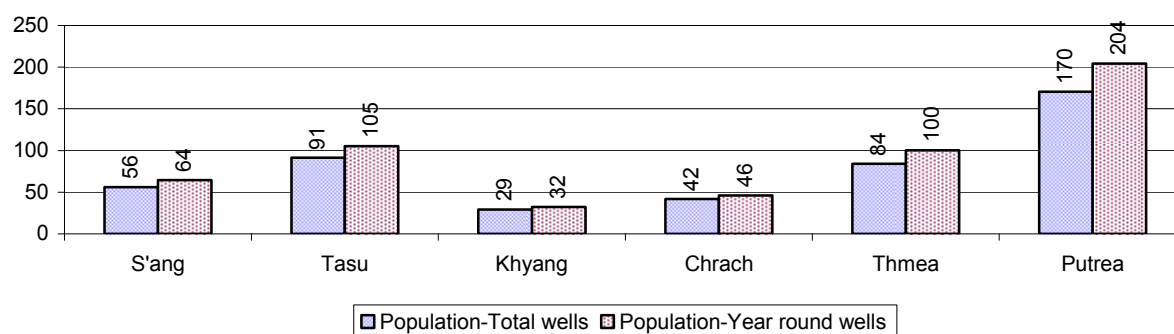
Note: Mortality rate calculated as a percentage of the total 5 year old population. Lack of immunization received calculated as a percentage of the total number 9-12 months olds there are

3.3 Water and Sanitation

3.3.1 Number of different types of Wells over 3 years

Type of wells	Number of wells by year		
	2006	2007	2008
<i>Total number of pumped or mixed wells</i>	167	183	206
Year-round usable pumped or mixed wells	104	158	181
Dry season unusable pump or mixed wells	63	25	25
Pump or mixed wells needing repair/rehabilitation	20	26	32
<i>Total number of ring wells</i>	145	155	144
Year-round usable ring wells	130	141	128
Dry season unusable ring wells	15	14	16
Ring wells needing repair/rehabilitation	13	8	10
<i>Total number of unprotected dug wells</i>	36	35	30
Year-round usable unprotected dug wells	27	29	24
Dry season unusable unprotected dug wells	9	6	6

3.3.2 Ratio of People to Wells, by Commune, in 2008

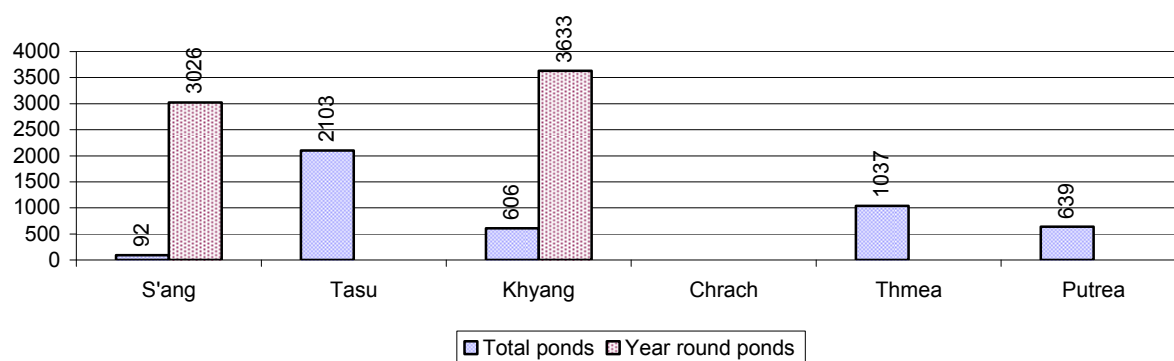


Note: Year-round wells excluding unprotected wells

3.3.3 Potable Ponds over 3 years

Type of Pond	2006	2007	2008
<i>Total number of normal-type ponds</i>	9 pond	18 pond	51 pond
Year-round usable normal-type ponds	0 pond	1 pond	2 pond
Dry season unusable normal-type ponds	9 pond	17 pond	49 pond
Normal-type ponds needing repair/rehabilitation	9 pond	15 pond	14 pond
<i>Total number of filter ponds</i>	0 pond	0 pond	0 pond
Year-round usable filter ponds	0 pond	0 pond	0 pond
Filter ponds, dry season unusable	0 pond	0 pond	0 pond
Filter ponds needing repair/rehabilitate	0 pond	2 pond	2 pond

3.3.4 Ratio of People to normal Ponds, by Commune in 2008



3.3.5 Ratio of People to Filter Ponds, by Commune, in 2008

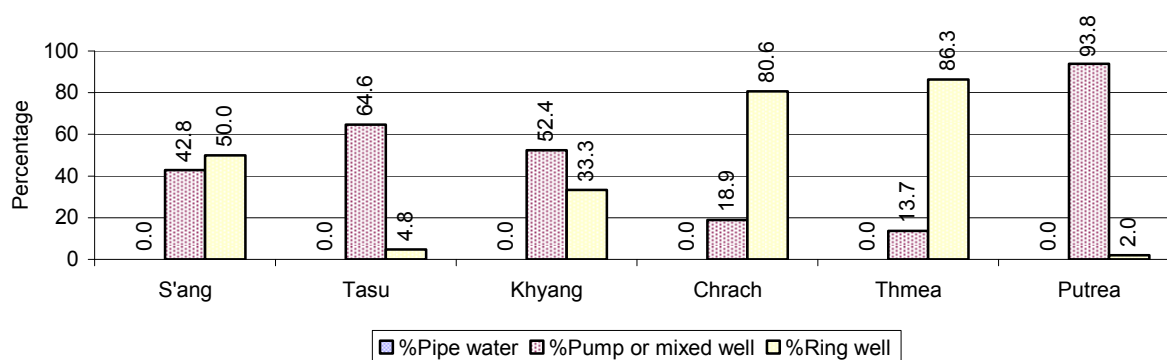
There were no filter ponds in this District in 2008

3.3.6 Source of potable Water for Households, over 3 years

Water sources	2006 %	2007 %	2008	
			%	Number
Families using water from purification system	0%	3 %	0 %	0 families
Families using water from pump, mixed wells	51%	45 %	51 %	2,099 families
Families using water from ring wells and open dug wells	29%	42 %	41 %	1,678 families
Families using water from pond	3%	3 %	0 %	0 families
Families using water from rain water storage	1%	1 %	1 %	28 families
Families using water from rivers, lakes, natural ponds and reservoirs	16%	6 %	7 %	300 families

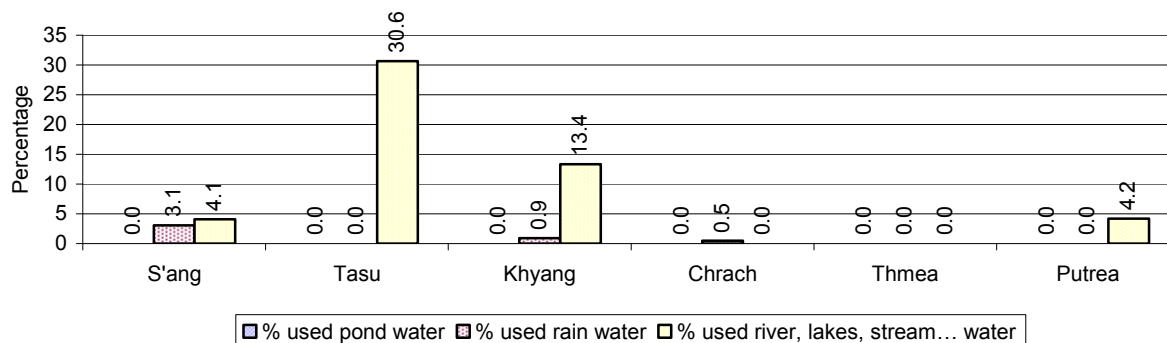
Note: Calculated as a percentage of the total number of families.

3.3.7 Percentage Families using different Water Sources, by Commune, in 2008



Note: Calculated as a percentage of the total number of families in each commune

3.3.8 Percentage Families using Water from Rain Water Storage, Ponds and natural Sources (rivers/lakes/natural ponds/reservoirs), by Commune, 2008



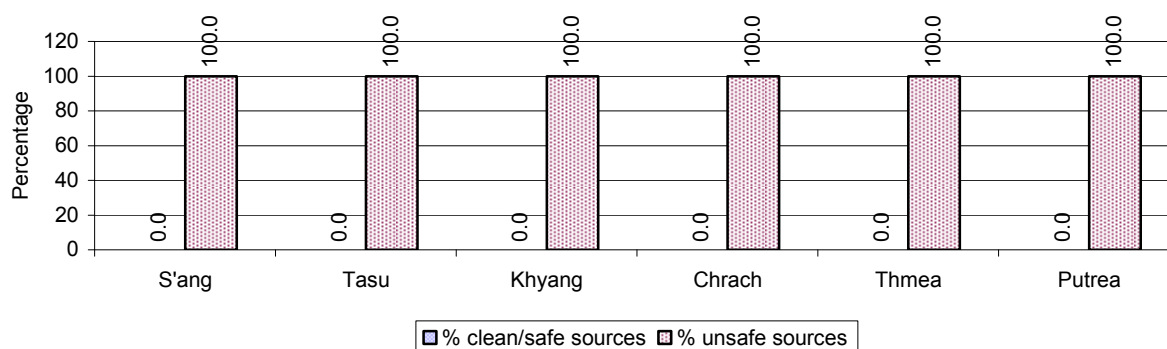
Note: Calculated as a percentage of the total number of families in each commune

3.3.9 Drinking Water Sources in the dry Season over 3 years

Percentage Families that get drinking water from:	2006	2007	2008	
	%	%	%	Number
from clean/safe sources	26 %	12 %	0 %	0 families
from unsafe sources	74 %	88 %	100 %	4,105 families

Note: Calculated as a percentage of the total number of families.

3.3.10 Percentage Families using safe and unsafe Water Sources in the dry Season, by Commune, in 2008



Note: Calculated as a percentage of the total number of families in each commune.

3.3.11 Drinking Water Purification by Households, over 3 years

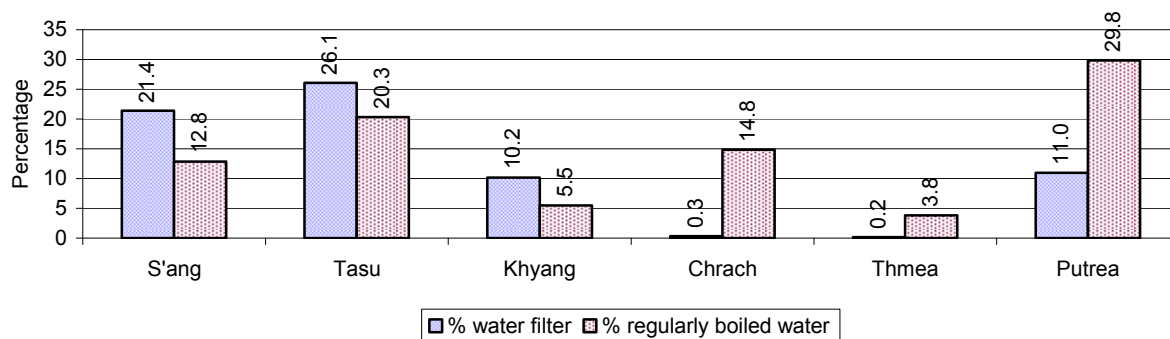
This table shows the different ways families make water safe for drinking.

Families, who:	2006	2007	2008	
	%	%	%	Number
Filter water for drinking	0%	3%	10 %	429 families
Boil water for drinking	11%	17%	15 %	627 families

Note: Calculated as a percentage of the total number of families

3.3.12 Percentage Families filtering Water or regularly boiling Water, by Commune, in 2008

This graph shows the different ways families make drinking water safe.



Note: Calculated on as a percentage of the total number of families in each commune.

3.3.13 Families' access to Water, over 3 years

Families access to water	2006	2007	2008	
	%	%	%	Number
Families with water at home or in less then 150m	65%	15%	69 %	2,820 families
Families with water 150m or more away from home	35%	9%	25 %	1,043 families

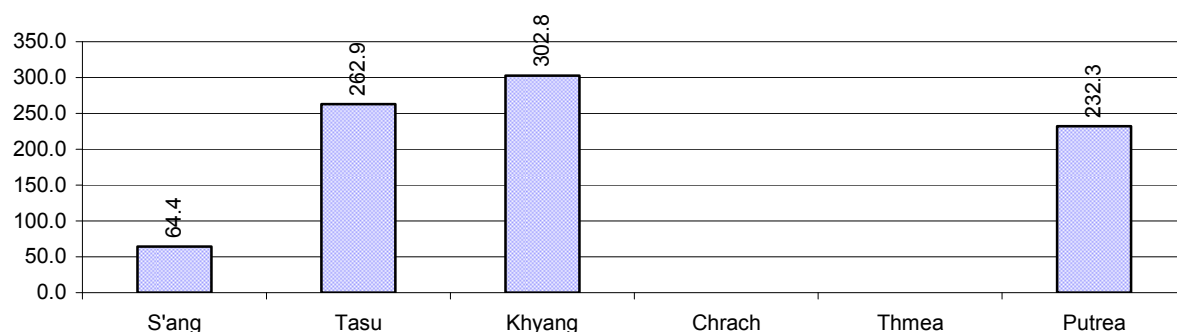
Note: Calculated as a percentage of the total number of families

3.3.14 Ratio of people to Latrines over 3 years

Description	2006	2007	2008	
	Ratio	Ratio	Ratio	Number
Ratio of people to latrines	407.5	426.2	228.8	89.0

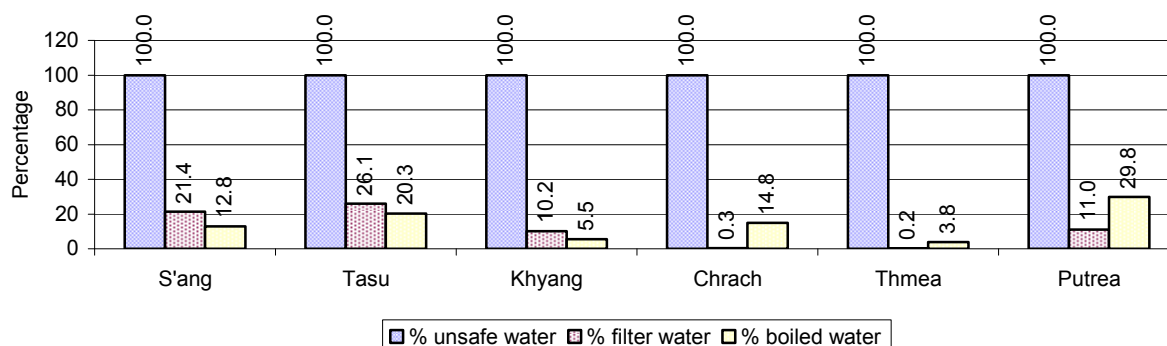
Note: Ratio calculated by dividing the number of houses with latrines by the total population

3.3.15 Ratio of People to Latrines, by Commune, in 2008



Note: Ratio calculated by dividing the number of houses with latrines by the total population in a Commune.

3.3.16 Percentage of Families drinking boiled, filtered or unsafe Water, by Commune, in 2008



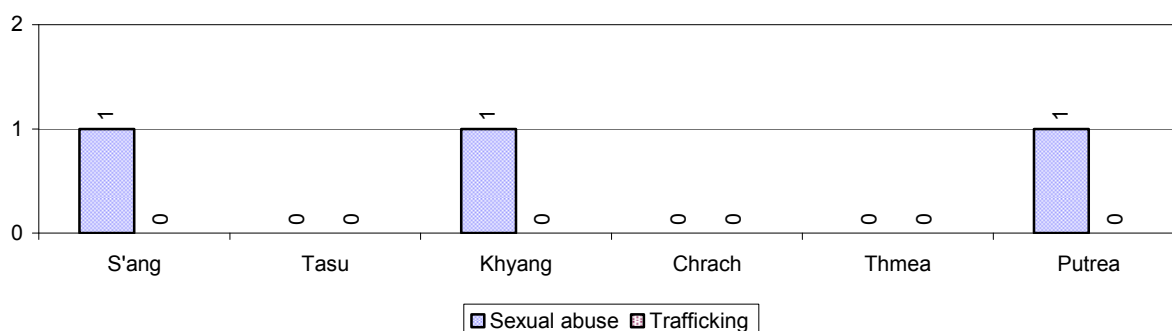
Note: Calculated as a percentage of the total number of families in each commune.

3.4 Vulnerable groups

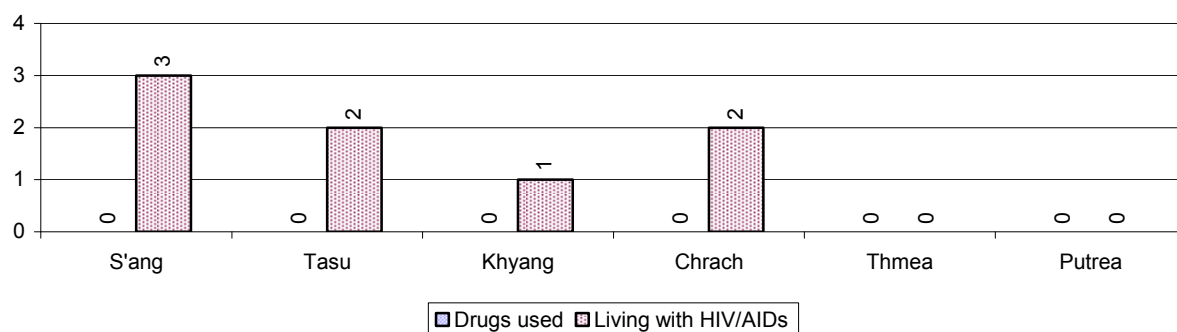
3.4.1 Vulnerable Groups in need of special Protection over 3 years

Vulnerable groups	2006	2007	2008
Victims of sexual abuse	6 person(s)	2 person(s)	3 person(s)
Victims of human trafficking	0 person(s)	6 person(s)	0 person(s)
Families with family member(s) using drugs	0 families	0 families	0 families
Families with family member(s) living with HIV/AIDS	2 families	4 families	8 families
Children under 18 yrs old whose parent died of AIDS	1 person(s)	0 person(s)	4 person(s)
Orphaned/abandoned children under 18 yrs old (all cases)	57 person(s)	105 person(s)	113 person(s)
Elderly persons without guardian	7 person(s)	9 person(s)	13 person(s)
Disabled people able to earn an income	17 person(s)	1 person(s)	6 person(s)
Disabled people unable to earn an income	17 person(s)	19 person(s)	16 person(s)
Disabled people under 18 yrs old	11 person(s)	11 person(s)	9 person(s)
Victims of natural disasters	48 families	377 families	149 families
Victims of land mines and unexploded weapons	18 person(s)	6 person(s)	0 person(s)

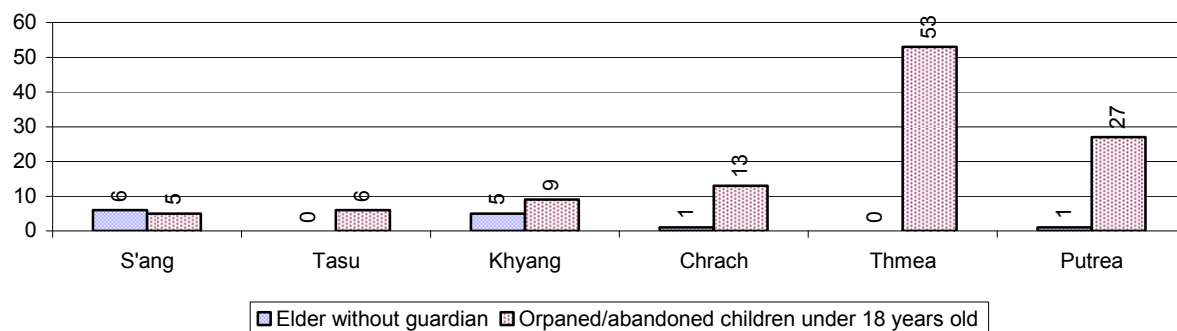
3.4.2 Registered Victims of sexual Abuse or Trafficking, by Commune, for 2008



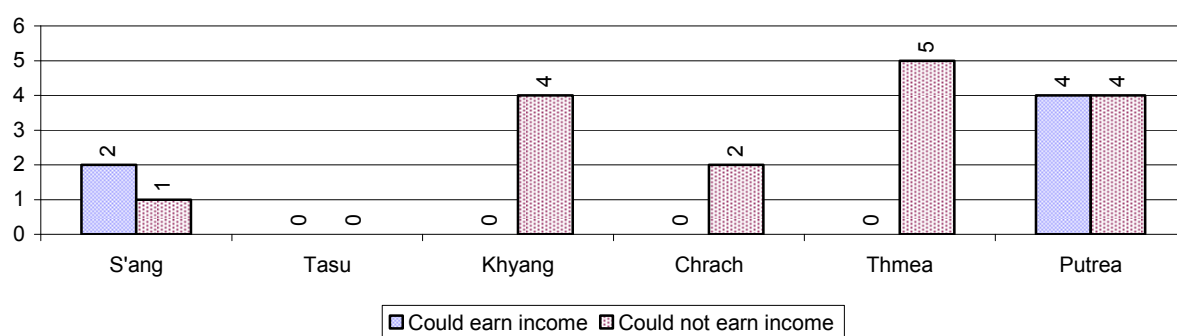
3.4.3 Registered Families with Member(s) using Drugs or living with HIV/AIDS, by Commune, for 2008



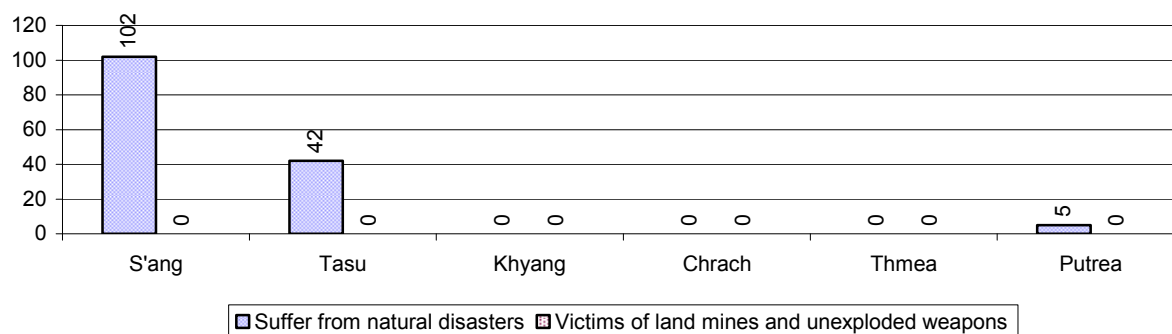
3.4.4 Elderly Persons without a Guardian and orphaned/abandoned Children under 18 years old, by Commune, for 2008



3.4.5 Number of disabled People who could or could not earn an Income, by Commune, for 2008



3.4.6 Number of Families who suffered from natural Disasters, and number of Victims of Land Mines and unexploded Weapons, by Commune, in 2008



3.5 Migration

3.5.1 Migration over 3 years

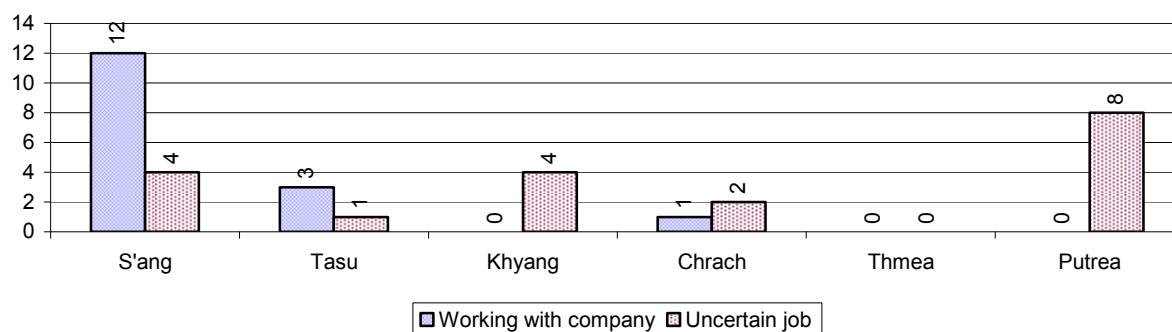
Description	2006	2007	2008
Number of families permanently in-migrated	24 families	19 families	18 families
Total number of people	103 person(s)	75 person(s)	80 person(s)
Total number of female	47 person(s)	34 person(s)	42 person(s)
Number of families permanently out-migrated	32 families	13 families	12 families
Total number of people	158 person(s)	55 person(s)	44 person(s)
Total number of female	69 person(s)	29 person(s)	20 person(s)
Number of families staying temporarily	6 families	13 families	14 families
Total number of people	31 person(s)	45 person(s)	40 person(s)
Total number of female	21 person(s)	22 person(s)	21 person(s)

3.5.2 Job Migration

Description	2006	2007	2008
Number of people migrated to work with company/factory	0%	0%	0%
Number of people migrated to work, but have uncertain jobs	0%	0%	0%

Note: Calculated as a percentage of the total population of 18-60 year olds

3.5.3 Number of People working outside their home Villages in a Company/Factory or with an uncertain Job in 2008

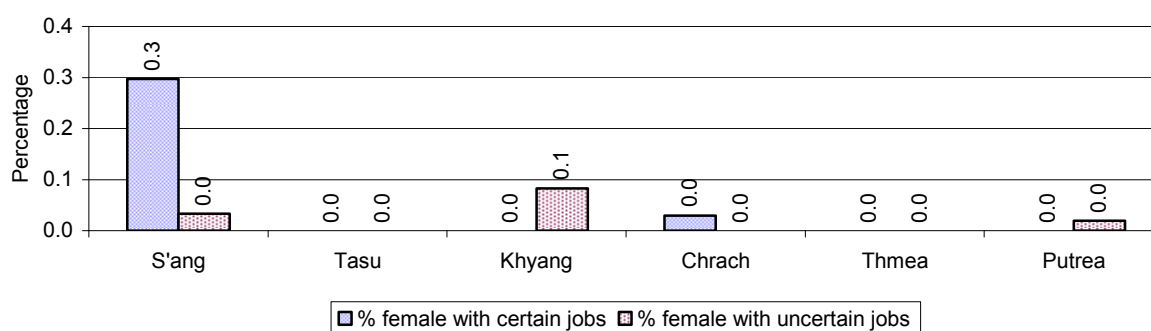


3.5.4 Female migration over 3 years

Description	2006 %	2007 %	2008	
			%	Number
Total number of migrants	0.2%	0.3%	0.2%	35 person(s)
Number of female migrants	0.1%	0.2%	0.1%	15 person(s)
Total number of migrants, who go to work with company/factory (with certain jobs)	0.1%	0.1%	0.1%	16 person(s)
Number of female migrants with certain jobs	0.0%	0.0%	0.0%	10 person(s)
Total number of migrants with uncertain jobs	0.1%	0.2%	0.1%	19 person(s)
Number of female migrants with uncertain jobs	0.0%	0.1%	0.0%	5 person(s)

Note: Calculated as a percentage of the total population

3.5.5 Percentage female Migrants with certain and uncertain Jobs, by Commune, in 2008



Note: Calculated as a percentage of the total population of the commune

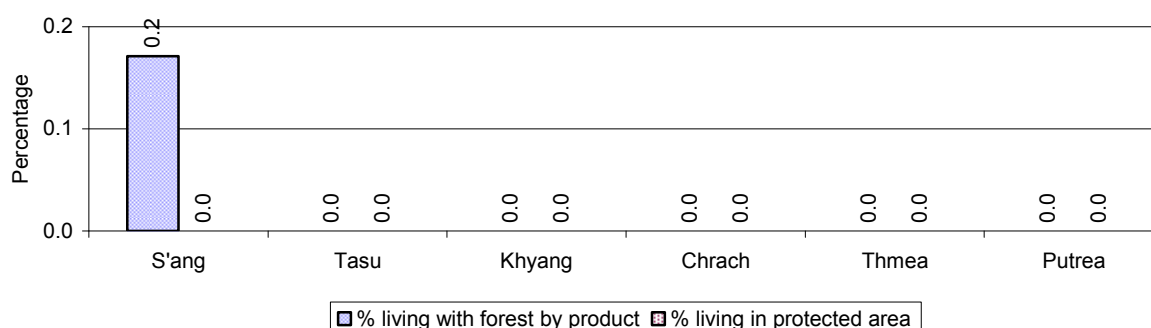
4 Natural Resources and Environment (NRE)

4.1 Families involved with NRE issues over 3 years

Description	2006 %	2007 %	2008	
			%	Number
Families living with forest by products	0 %	0 %	0 %	1 families
Families living in a protected area	0 %	0 %	0 %	0 families
Houses with access to garbage collection service	0 %	0 %	0 %	0 families
Families affected by environmental pollution	0 %	0 %	0 %	0 families
Families using chemical fertilizer	0 %	0 %	0 %	0 families
Families using chemical pesticide	0 %	0 %	0 %	1 families

Note: Calculated as a percentage of the total number of families

4.2 Percentage of Families involved with Natural Resource issues, by Commune, for 2008



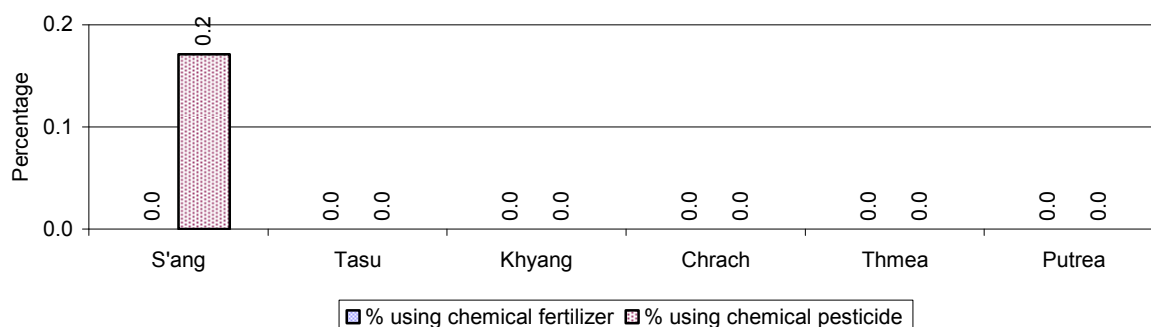
Note: Calculated as a percentage of the number of families in each commune

4.3 Percentage Houses with access to Garbage collection and Families affected by environmental Pollution, by Commune, for 2008

There were no houses with access to garbage collection and there were no families affected by environmental pollution in this District in 2008

Note: Garbage collection is calculated as a percentage of the total number of houses in each commune and families affected by environmental pollution is calculated as a percentage of the total number of families in each commune.

4.4 Percentage Families using chemical Fertilizer and chemical Pesticides, by Commune, for 2008



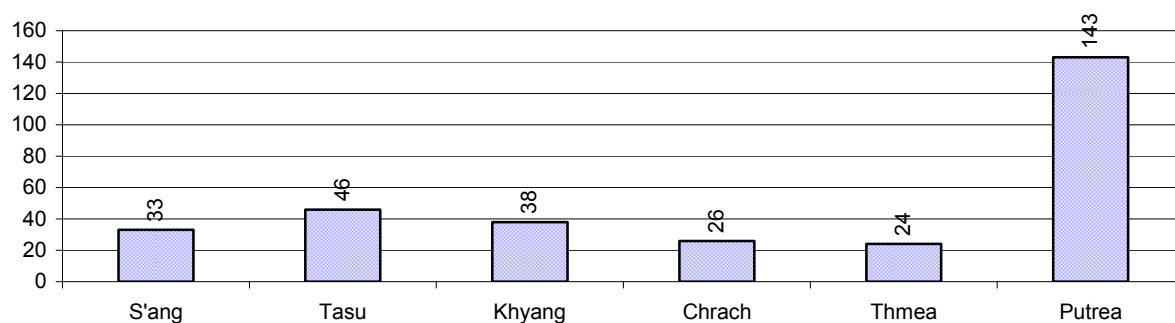
Note: Calculated as a percentage of the total number of families in each commune

5 Administration and Security

5.1 Birth Registration across 3 years

Description	2006	2007	2008
Number of infants to be registered	360 person(s)	298 person(s)	396 person(s)
Number of unregistered infants the year	212 person(s)	190 person(s)	310 person(s)
Percentage of infants unregistered	59 %	64 %	78 %

5.2 Number of unregistered Infants born in 2008, by Commune

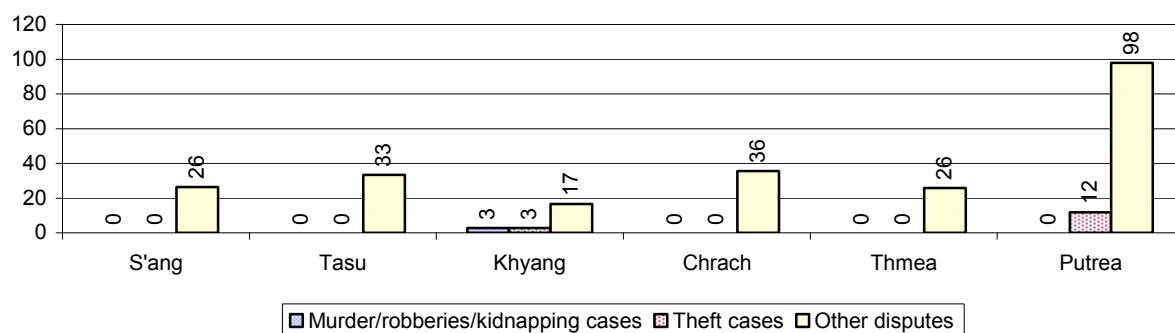


5.3 Registered criminal Cases over 3 years

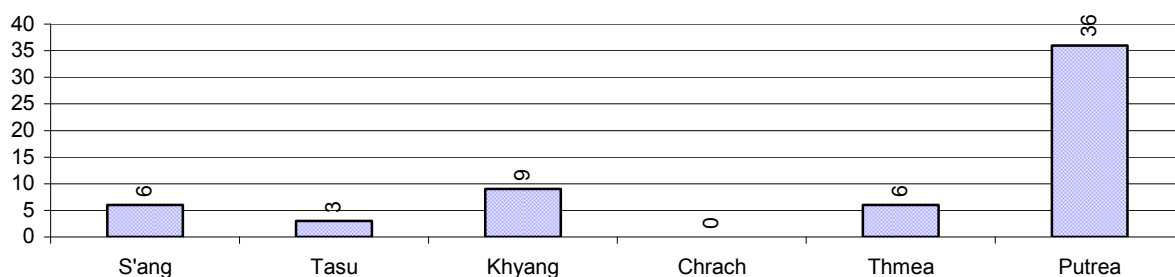
Description	2006	2007	2008
Murders, robberies and kidnapping cases	1 case(s)	4 case(s)	1 case(s)
Theft cases	30 case(s)	9 case(s)	7 case(s)
land dispute cases	69 case(s)	56 case(s)	60 case(s)
Other disputes cases	53 case(s)	64 case(s)	91 case(s)

Note: this reflects only registered criminal cases

5.4 Registered criminal Cases per 10,000 people, by Commune, for 2008



5.5 Number of registered Land Disputes, by Commune, in 2008

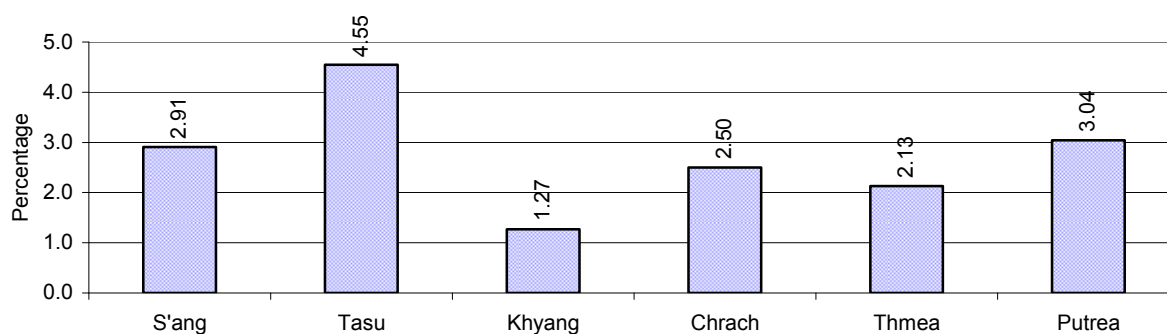


6 Gender

6.1 Registered Domestic Violence over 3 years

Description		2006	2007	2008
Families experiencing domestic violence		146 families	94 families	107 families(s)
% families experiencing domestic violence		4 %	2 %	3 %
Domestic violence cases reported by village chiefs		87 case(s)	79 case(s)	87 case(s)
Type	Physical violence	26 case(s)	34 case(s)	30 case(s)
	Sexual violence	1 case(s)	3 case(s)	3 case(s)
	Mental violence	40 case(s)	26 case(s)	29 case(s)
	Household economic violence	20 case(s)	16 case(s)	25 case(s)
Number of administrative decisions on domestic violence		0 case(s)	23 case(s)	53 case(s)
% of administrative decisions on domestic violence		0 %	29 %	61 %

6.2 Percentage of registered cases of Families experiencing domestic Violence, by Commune, in 2008



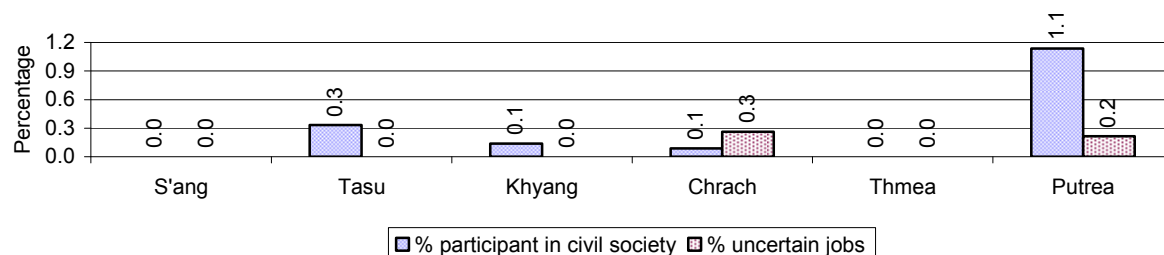
Note: Calculated as a percentage of the total number of families in each commune

6.3 Women's involvement over 3 years

Description	2006 %	2007 %	2008	
			%	Number
People participating in civil society	1%	6%	1%	152 person(s)
Women participating in civil society	0%	3%	0%	73 person(s)
People, 18-60 yrs, with uncertain/irregular jobs	1%	9%	0%	15 person(s)
Women, 18-60 yrs, with uncertain/irregular jobs	0%	5%	0%	9 person(s)

Note: Participation can be in NGOs, CBOs, credit groups, women's unions, parties and other civil society organizations. The first section is calculated as a percentage of the total population. The second section is calculated as a percentage of the total 18-60 year old population.

6.4 Percentage of Female Participants in Civil Society and of 18-60 year women with uncertain Jobs, by Commune, in 2008



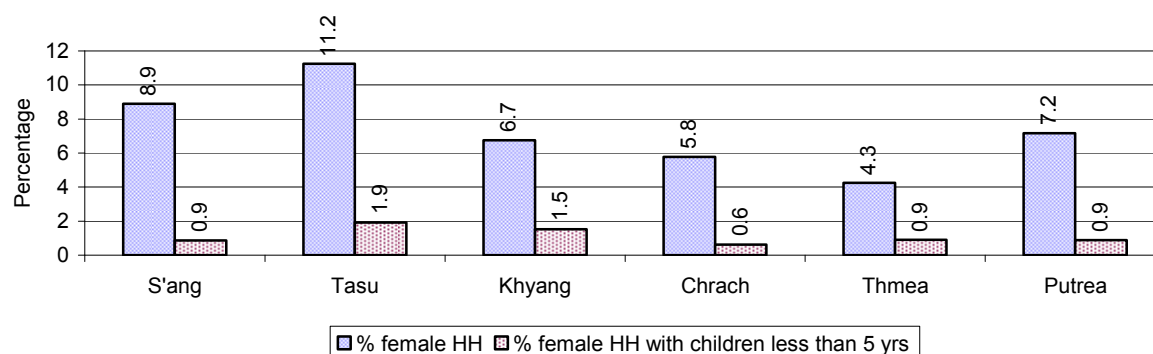
Note: Percentage of female participants in civil society is calculated as a percentage of the total population per commune. The percentage of 18-60 years old women with uncertain jobs is calculated as a percentage of the total 18-60 year old population per commune.

6.5 Female-headed Households over 3 years

Families with:	2006	2007	2008	
	%	%	%	Number
Households in which a woman is the family head	7%	7%	7%	290 families
Households in which a woman is the family head with children of less than 5 yrs	1%	2%	1%	44 families

Note: Calculated as a percentage of the total number of families

6.6 Percentage female-headed Households and with Children of less than 5 years old, by Commune, in 2008



Note: Calculated as a percentage of the total number of families in each commune
HH: Headed Household

7 Indigenous People in the District

7.1 Ethnic Minorities in the District over 3 years

Race of indigenous	2006		2007		2008	
	# families	# population	# families	# population	# families	# population
Phnong	2 families	8 person(s)	0 families	0 person(s)	1 families	7 person(s)
Kouy	1,210 families	6,462 person(s)	1,167 families	6,295 person(s)	1,605 families	7,744 person(s)
Stieng	0 families	0 person(s)	0 families	0 person(s)	0 families	0 person(s)
Mil	0 families	0 person(s)	0 families	0 person(s)	0 families	0 person(s)
Kroal	0 families	0 person(s)	0 families	0 person(s)	0 families	0 person(s)
Thmorn	0 families	0 person(s)	0 families	0 person(s)	0 families	0 person(s)
Khaonh	0 families	0 person(s)	0 families	0 person(s)	0 families	0 person(s)
Tompuonn	1 families	5 person(s)	1 families	7 person(s)	0 families	0 person(s)
Charay	0 families	0 person(s)	0 families	0 person(s)	0 families	0 person(s)
Kroeung	0 families	0 person(s)	1 families	6 person(s)	0 families	0 person(s)
Kavet	0 families	0 person(s)	0 families	0 person(s)	0 families	0 person(s)
Saouch	0 families	0 person(s)	0 families	0 person(s)	0 families	0 person(s)
Lun	0 families	0 person(s)	0 families	0 person(s)	0 families	0 person(s)
Kachak	0 families	0 person(s)	0 families	0 person(s)	0 families	0 person(s)
Praov	0 families	0 person(s)	0 families	0 person(s)	0 families	0 person(s)
Others	0 families	0 person(s)	0 families	0 person(s)	0 families	0 person(s)
Total	1,213 families	6,467 person(s)	1,169 families	6,308 person(s)	1,606 families	7,744 person(s)

Note: "Others" refer to other ethnic groups which are not listed.

7.2 Other Minorities in the District over 3 years

Minority	2006		2007		2008	
	# families	# population	# families	# population	# families	# population
Khmer Islamic	2 families	10 person(s)	2 families	8 person(s)	2 families	9 person(s)
Vietnamese	1 families	2 person(s)	1 families	2 person(s)	1 families	2 person(s)
Laos	1 families	6 person(s)	7 families	49 person(s)	0 families	0 person(s)

Note: Number of indigenous and minority population are additional data, so some village may not recorded.

SECTION C: PLANS AND PROJECTS

8 Priorities and Plans

8.1 Priorities of Commune Councils for 2009 in the District by Sector

The District Priority Activity Matrix (DPAM) data are taken from the CDPD. The DPAM is used for the District Integration Workshop (DIW), to show what kind of projects the commune has proposed in their Commune Investment Plan (CIP) for 2009. Donors, departments and other agencies then consider which projects they want to support and which projects they are not interested in. This results in Temporary Agreements between the Commune Council and the Supporter (NGO, Department, private donor, etc), as shown in table 8.2

No.	Project Name	S'ang	Tasu	Khyang	Chrach	Thmea	Putrea	Req.Project
		130101	130102	130103	130104	130105	130106	Total
Economic								
1	Fruit tree cultivation training	2 training	3 training				3 training	3
2	Rice seed production training	2 training	3 training				3 training	3
3	Rice field demonstration				1 training	1 training		2
4	Soil improvement techniques training			3 training		1 training		2
5	Mushroom growing training	2 training	3 training				3 training	3
6	Natural rice cultivation practice	2 training	3 training				3 training	3
7	Agricultural land expansion	0 ha	3 village				3 village	3
8	Rice cultivation technique training	2 training	3 training	3 training	1 training		3 training	5
9	E.M technique training	2 training	3 training				3 training	3
10	Animal vaccination request			150 bottle		30 bottle		2
11	Village veterinary training			3 person		1 training		2
12	Animal raising training		3 training					1
13	Pig raising training	1 training					3 training	2
14	Chicken raising training	1 training					3 training	2
15	Rice seed request				300 Kg			1
16	Fruit trees seedling request				6 village			1
17	Calf for raising request			80 Head		30 Head		2
18	Sow for raising request	20 Head	15 Head			30 Head	15 Head	4
19	Chicken request	100 Head						1
20	Vegetable seed and farming tools request	45 Kg	3 time				3 village	3
21	Family fish pond construction			90 Pond				1
22	Fish raising training	2 training	3 training	3 training			3 training	4
23	Fish fingerling request	20000 Head	3 village	90000 Head			3 village	4
24	Fish hatchery station construction	1 place	1 set				1 set	3

District Data Book 2009: Development Plans and Projects

No.	Project Name	S'ang	Tasu	Khyang	Chrach	Thmea	Putrea	Req.Project
		130101	130102	130103	130104	130105	130106	Total
25	Laterite/natural gravel road construction			3000 m	3000 m	1000 m		3
26	Culvert construction			5 place	4 place			2
27	Bridger construction			1 place	2 place	3 place	1 place	4
28	Laterite/natural gravel road repairing	1500 m	1000 m		2000 m	2110 m		4
29	Culvert repairing				2 place			1
30	Canal construction		2 km				2 km	2
31	Dam construction			150 m	1 place	800 m		3
32	Water gate construction			1 place				1
33	Culvert with stop logs construction		1 place				1 place	2
34	Spillway construction			1 place				1
35	Dam repairing		2 place		630 m		2 place	3
36	Cash credit					3 village		1
37	Rice seed bank					600 Kg		1
38	Rice bank establish					10 T		1
39	Water pump			6 set	12 set			2
Social								
1	HIV/AIDS awareness education					1 training		1
2	Health/hygiene education for local people	2 training	3 village			1 training	3 training	4
3	Smoking reduction through health education					1 training		1
4	TBA training			6 person	1 training	1 training		3
5	TBA equipment needs			6 person		11 set		2
6	Mosquito nets distribution/treatment			500 mosqui-net	681 family	609 family		3
7	Malaria awareness education					3 time		2
8	Health card for the poor					60 family		1
9	Health subsidiary fund for the poor			3 place				1
10	Latrine construction	150 toilet	20 toilet	60 toilet	100 toilet	100 toilet	20 toilet	6
11	Commune health center construction				1 building			1
12	Village health post construction		1 building	1 building		1 building	1 building	4
13	Water filter equipment supply			50 Container		30 Container		2
14	Family wate jars provision			30 tank				1
15	Pump wells construction	10 well		30 well		9 well	3 well	4
16	Ring wells construction					9 well		1
17	Ponds construction		15 Pond	30 Pond	6 Pond	3 Pond	15 Pond	5

District Data Book 2009: Development Plans and Projects

No.	Project Name	S'ang	Tasu	Khyang	Chrach	Thmea	Putrea	Req.Project
		130101	130102	130103	130104	130105	130106	Total
18	Pump wells repairing			4 well		3 well		2
19	Ponds repairing					4 Pond		1
20	Literacy class	3 class	3 class	3 class	5 class	5 class	3 class	6
21	Literacy teacher support		3 person	3 person		5 person	1 person	4
22	Literacy teacher training					5 person		1
23	Literacy class materials support					5 class		1
24	Junior high school construction				1 building			1
25	Primary school creation/construction	1 building	1 building	1 building			1 building	4
26	Kindergarten school construction/repair			1 building				1
27	Pre-school teacher/kid keeper support			1 person				1
28	Teacher/volunteer teacher need			5 person		5 person		2
29	Dormitory construction for teacher/pupils				6 building			1
30	Computer skill training				1 person			1
31	House for the poor construction/repairing			2 building				1
NREM								
1	Environmental awareness and law education					1 time		1
2	Fishery law education	2 time	3 time		6 time		3 time	4
3	Forestry law education	2 time	3 time	3 time	6 time	3 time	3 time	6
4	Wildlife protection law education				6 time	3 time		2
5	Environmental poster installation			150 piece				1
6	Community forestry activities support					2 time		1
7	Forest protection strengthening			9 time				1
Administration and Security								
1	CC capacity strengthening				7 person	1 training		2
2	Good governance training					1 training		1
3	Commune study tour					1 time		1
4	Land law dissemination	3 time	3 time	3 time	6 time		3 time	5
5	Provision of land titles/certificates		3 village	264 family	681 family	609 family	3 village	5
6	Public land takeover prevention			3 time				1
7	Social land concession project						3 village	1
8	Local security strengthening			6 time				1
9	Local security regulation/order dissemination	3 time	3 time				3 time	3
10	Law/regulation dissemination			6 time				1
Gender								
1	Gender mainstreaming among local people			3 time				1

District Data Book 2009: Development Plans and Projects

No.	Project Name	S'ang	Tasu	Khyang	Chrach	Thmea	Putrea	Req.Project
		130101	130102	130103	130104	130105	130106	Total
2	Woman and children's rights dissemination	3 time						1
3	Girls rights in access to education dissemination			3 time				1
4	Khmer woman tradition dissemination					1 training		1
5	Non-coerce marriage awareness education				2 time			1
6	Women vocational training				4 person			1
7	Law against domestic violence dissemination	3 time	3 time	3 time	2 time	1 time	3 time	6
8	Alcohol reduction education		3 village			2 training	3 training	3
9	Children protection community network creation/strengthening				2 time			1
10	Children rescue center support	1 place						1
11	Children fund establishment/support	1 place						1

Source: CDPD – District Priority Matrix

8.2 Temporary Agreements by Commune, for 2009²

At the District Integration Workshop (DIW) the Supporters (donors, agencies, private donors, NGOs, etc.) identify which projects/activities they would like to support or they put forward their own projects to be implemented in a particular commune. Once there is agreement between Commune Councils and Supporters on specific projects a **Temporary Agreement** is signed by the commune and the Supporter to show their mutual commitment to the identified projects/activities.

It is important to keep in mind that such Temporary Agreements do not necessarily result in implementation.

8.2.1 Temporary Agreements for 2009 as per DIW 2008 for Commune: S'ang

Commune GIS	Commune	Temporary Agreements				Supporter	Funding Source	Listed in CIP befor DIW
		Project Name	Quantity	Unit	Est.Cost (K.Riels)			
Economic								
130101	S'ang	Routine road maintenance	6	km	0	Department of Rural Development		<input type="checkbox"/>
130101	S'ang	Sow for raising request	1	time	0	Buddhist For Development		✓
Social								
130101	S'ang	Junior high school teacher supply	1	person	0	Department of Education Youth and Sports		<input type="checkbox"/>
130101	S'ang	School materials and cloth support to pupils	100	person	0	Buddhist For Development		<input type="checkbox"/>
130101	S'ang	Hygiene materials supply for poor pupils	12	time	0	Buddhist For Development		<input type="checkbox"/>
130101	S'ang	Scholarship provision to poor pupils (indigenous people)	12	Month	0	Buddhist For Development		<input type="checkbox"/>
130101	S'ang	Historical and educational documents supply	1	set	0	Buddhist For Development		<input type="checkbox"/>
Administration and Security								
130101	S'ang	Cupboard and administration documents support	1	set	0	Buddhist For Development		<input type="checkbox"/>
130101	S'ang	Movies show on land law, domestic violence and marriage law	3	time	0	Buddhist For Development		<input type="checkbox"/>
130101	S'ang	Experience sharing meeting of out of court conflict resolution committee	3	time	0	Buddhist For Development		<input type="checkbox"/>
130101	S'ang	Demining	15	ha	600000	Mine Advisory Group		<input type="checkbox"/>

² Not all the data from the CDPD has been translated to English, this has resulted in some cells in the TA tables being blank.

Commune GIS	Commune	Temporary Agreements				Supporter	Funding Source	Listed in CIP befor DIW
		Project Name	Quantity	Unit	Est.Cost (K.Riels)			
130101	S'ang	Land law dissemination	3	training	0	Department of Land Management, Urban Planning & Construction	PIF	✓

8.2.2 Temporary Agreements for 2009 as per DIW 2008 for Commune: Tasu

Commune GIS	Commune	Temporary Agreements				Supporter	Funding Source	Listed in CIP befor DIW
		Project Name	Quantity	Unit	Est.Cost (K.Riels)			
Economic								
130102	Tasu	Routine road maintenance	10	km	0	Department of Rural Development		<input type="checkbox"/>
130102	Tasu	Sow for raising request	1	time	0	Buddhist For Development		✓
Social								
130102	Tasu	Teacher supply	1	person	0	Department of Education Youth and Sports		<input type="checkbox"/>
130102	Tasu	Historical and educational documents supply	1	set	0	Buddhist For Development		<input type="checkbox"/>
130102	Tasu	Budget, school materials and cloth support to pupils	100	person	0	Buddhist For Development		<input type="checkbox"/>
130102	Tasu	Hygiene materials supply for poor pupils	12	time	0	Buddhist For Development		<input type="checkbox"/>
130102	Tasu	Scholarship provision to poor pupils (indigenous people)	12	Month	0	Buddhist For Development		<input type="checkbox"/>
130102	Tasu	Literacy teacher support	1	person	0	Department of Education Youth and Sports	PIF	✓
130102	Tasu	Literacy class	1	class	0	Department of Education Youth and Sports	PIF	✓
130102	Tasu	Primary school construction	1	building	0	Department of Education Youth and Sports		✓
Administration and Security								
130102	Tasu	Movies show on land law, domestic violence and marriage law	3	time	0	Buddhist For Development		<input type="checkbox"/>
130102	Tasu	Experience sharing meeting of out of	3	time	0	Buddhist For Development		<input type="checkbox"/>

Commune GIS	Commune	Temporary Agreements				Supporter	Funding Source	Listed in CIP befor DIW
		Project Name	Quantity	Unit	Est.Cost (K.Riels)			
		court conflict resolution committee						
130102	Tasu	Cupboard and administration documents support	1	set	0	Buddhist For Development		<input type="checkbox"/>
130102	Tasu	Land law dissemination	3	training	0	Department of Land Management, Urban Planning & Construction	PIF	✓

8.2.3 Temporary Agreements for 2009 as per DIW 2008 for Commune: Khyang

Commune GIS	Commune	Temporary Agreements				Supporter	Funding Source	Listed in CIP befor DIW
		Project Name	Quantity	Unit	Est.Cost (K.Riels)			
Economic								
130103	Khyang	Pig raising training	1	training	0	Department of Agriculture Forestry and Fisheries		<input type="checkbox"/>
130103	Khyang	Village veterinary training	2	person	0	Department of Agriculture Forestry and Fisheries		✓
130103	Khyang	Fund support for piglet	1	time	0	Buddhist For Development		<input type="checkbox"/>
130103	Khyang	Pig supply for raising	50	Head	0	Department of Agriculture Forestry and Fisheries		<input type="checkbox"/>
130103	Khyang	Rice cultivation technique training	1	training	0	Department of Agriculture Forestry and Fisheries		✓
130103	Khyang	Vegetable seed and farming tools support	50	family	0	Department of Agriculture Forestry and Fisheries		<input type="checkbox"/>
130103	Khyang	Chicken raising training	1	training	0	Department of Agriculture Forestry and Fisheries		<input type="checkbox"/>
130103	Khyang	Rice seed supply	50	family	0	Department of Agriculture Forestry and Fisheries		<input type="checkbox"/>
130103	Khyang	Chicken raising supply	50	family	0	Department of Agriculture Forestry and Fisheries		<input type="checkbox"/>
130103	Khyang	Rice bank establish/strengthen	2	grange	0	Department of Agriculture Forestry and Fisheries		<input type="checkbox"/>
130103	Khyang	Fruit trees seedling support	50	family	0	Department of Agriculture Forestry and Fisheries		<input type="checkbox"/>

District Data Book 2009: Development Plans and Projects

Commune GIS	Commune	Temporary Agreements				Supporter	Funding Source	Listed in CIP before DIW
		Project Name	Quantity	Unit	Est.Cost (K.Riels)			
130103	Khyang	Chicken-pig raising demonstration	8	demo	0	Department of Agriculture Forestry and Fisheries		<input type="checkbox"/>
130103	Khyang	Funding support for family income generation	50	family	4000	Department of Agriculture Forestry and Fisheries		<input type="checkbox"/>
130103	Khyang	Funding support for group income generation	4	Team	5600	Department of Agriculture Forestry and Fisheries		<input type="checkbox"/>
130103	Khyang	Funding for emergency relief	50	family	880	Department of Agriculture Forestry and Fisheries		<input type="checkbox"/>
130103	Khyang	Dam repairing	1020	m	344000	Adventis Development and Relief Agency		<input type="checkbox"/>
130103	Khyang	Fruit tree cultivation technique training	1	training	0	Department of Agriculture Forestry and Fisheries		<input type="checkbox"/>
130103	Khyang	Compost-making training	50	family	0	Department of Agriculture Forestry and Fisheries		<input type="checkbox"/>
Social								
130103	Khyang	Teacher/volunteer teacher need	1	person	0	Department of Education Youth and Sports		✓
130103	Khyang	Budget, school materials and cloth support to pupils	1	time	0	Buddhist For Development		<input type="checkbox"/>
130103	Khyang	Scholarship provision to poor pupils (indigenous people)	12	Month	0	Buddhist For Development		<input type="checkbox"/>
130103	Khyang	Teacher/volunteer teacher need	1	person	0	Department of Education Youth and Sports		✓
130103	Khyang	Hygiene materials supply for poor pupils	12	time	0	Buddhist For Development		<input type="checkbox"/>
130103	Khyang	Literacy class	1	class	0	Department of Education Youth and Sports		✓
130103	Khyang	Historical and educational documents supply	1	set	0	Buddhist For Development		<input type="checkbox"/>
130103	Khyang	Primary school construction	1	building	0	Department of Education Youth and Sports		✓
130103	Khyang	Literacy teacher support	1	person	0	Department of Education Youth and Sports		✓
Administration and Security								
130103	Khyang	Experience sharing meeting of out of	3	time	0	Buddhist For Development		<input type="checkbox"/>

Commune GIS	Commune	Temporary Agreements				Supporter	Funding Source	Listed in CIP befor DIW
		Project Name	Quantity	Unit	Est.Cost (K.Riels)			
		court conflict resolution committee						
130103	Khyang	Movies show on land law, domestic violence and marriage law	3	time	0	Buddhist For Development		<input type="checkbox"/>
130103	Khyang	Cupboard and administration documents support	1	set	0	Buddhist For Development		<input type="checkbox"/>
Gender								
130103	Khyang	WCFPs capacity and courageousness strengthening forum	1	time	0	Department of Women		<input type="checkbox"/>
130103	Khyang	Gender mainstreaming in agriculture sector reporting training	1	training	0	Department of Women		<input type="checkbox"/>
130103	Khyang	Gender concept training	1	training	0	Department of Women		<input type="checkbox"/>
130103	Khyang	Gender analysis training	1	training	0	Department of Women		<input type="checkbox"/>
130103	Khyang	Vocational training to woman target group	1	training	0	Department of Women		<input type="checkbox"/>
130103	Khyang	Pictorial materials use training	1	time	0	Department of Women		<input type="checkbox"/>

8.2.4 Temporary Agreements for 2009 as per DIW 2008 for Commune: Chrach

Commune GIS	Commune	Temporary Agreements				Supporter	Funding Source	Listed in CIP befor DIW
		Project Name	Quantity	Unit	Est.Cost (K.Riels)			
Social								
130104	Chrach	School construction	1	building	0	Department of Education Youth and Sports		<input type="checkbox"/>
130104	Chrach	Literacy class teacher support	1	person	0	Department of Education Youth and Sports		<input type="checkbox"/>
130104	Chrach	Junior high school teacher supply	1	person	0	Department of Education Youth and Sports		<input type="checkbox"/>
130104	Chrach	Teacher supply	2	person	0	Department of Education Youth and Sports		<input type="checkbox"/>
130104	Chrach	Historical and educational documents supply	1	set	0	Buddhist For Development		<input type="checkbox"/>
130104	Chrach	Literacy class	1	class	0	Department of Education Youth		✓

Commune GIS	Commune	Temporary Agreements				Supporter	Funding Source	Listed in CIP before DIW
		Project Name	Quantity	Unit	Est.Cost (K.Riels)			
						and Sports		
Administration and Security								
130104	Chrach	Movies show on land law, domestic violence and marriage law	6	time	0	Buddhist For Development		<input type="checkbox"/>
130104	Chrach	Experience sharing meeting of out of court conflict resolution committee	3	time	0	Buddhist For Development		<input type="checkbox"/>
130104	Chrach	Cupboard and administration documents support	1	set	0	Buddhist For Development		<input type="checkbox"/>

8.2.5 Temporary Agreements for 2009 as per DIW 2008 for Commune: Thmea

Commune GIS	Commune	Temporary Agreements				Supporter	Funding Source	Listed in CIP befor DIW
		Project Name	Quantity	Unit	Est.Cost (K.Riels)			
Social								
130105	Thmea	Historical and educational documents supply	1	set	0	Buddhist For Development		<input type="checkbox"/>
130105	Thmea	Teacher/volunteer teacher need	2	person	0	Department of Education Youth and Sports		✓
130105	Thmea	Literacy teacher support	1	person	0	Department of Education Youth and Sports		✓
130105	Thmea	Literacy class	1	class	0	Department of Education Youth and Sports		✓
Administration and Security								
130105	Thmea	Movies show on land law, domestic violence and marriage law	3	time	0	Buddhist For Development		<input type="checkbox"/>
130105	Thmea	Experience sharing meeting of out of court conflict resolution committee	3	time	0	Buddhist For Development		<input type="checkbox"/>
130105	Thmea	Cupboard and administration documents support	1	set	0	Buddhist For Development		<input type="checkbox"/>

8.2.6 Temporary Agreements for 2009 as per DIW 2008 for Commune: Putrea

Commune GIS	Commune	Temporary Agreements				Supporter	Funding Source	Listed in CIP before DIW
		Project Name	Quantity	Unit	Est.Cost (K.Riels)			
Economic								
130106	Putrea	Chicken raising supply	50	family	0	Department of Agriculture Forestry and Fisheries		<input type="checkbox"/>
130106	Putrea	Rice cultivation technique training	1	training	0	Department of Agriculture Forestry and Fisheries		✓
130106	Putrea	Vegetable seed and farming tools request	50	family	0	Department of Agriculture Forestry and Fisheries		✓
130106	Putrea	Fruit tree cultivation training	1	training	0	Department of Agriculture Forestry and Fisheries		✓
130106	Putrea	Sow for raising request	50	Head	0	Department of Agriculture Forestry and Fisheries		✓
130106	Putrea	Pig raising training	1	training	0	Department of Agriculture Forestry and Fisheries		✓
130106	Putrea	Chicken raising training	1	training	0	Department of Agriculture Forestry and Fisheries		✓
130106	Putrea	Routine road maintenance	6	km	0	Department of Rural Development		<input type="checkbox"/>
130106	Putrea	Rice seed supply	50	family	0	Department of Agriculture Forestry and Fisheries		<input type="checkbox"/>
130106	Putrea	Rice bank establish/strengthen	2	grange	0	Department of Agriculture Forestry and Fisheries		<input type="checkbox"/>
130106	Putrea	Fruit trees seedling support	50	family	0	Department of Agriculture Forestry and Fisheries		<input type="checkbox"/>
130106	Putrea	Compost-making training	50	family	0	Department of Agriculture Forestry and Fisheries		<input type="checkbox"/>
130106	Putrea	Funding support for family income generation	50	family	4000	Department of Agriculture Forestry and Fisheries		<input type="checkbox"/>
130106	Putrea	Funding support for group income generation	4	Team	5600	Department of Agriculture Forestry and Fisheries		<input type="checkbox"/>
130106	Putrea	Funding for emergency relief	50	family	880	Department of Agriculture Forestry and Fisheries		<input type="checkbox"/>
130106	Putrea	Village veterinary training	2	person	0	Department of Agriculture		<input type="checkbox"/>

District Data Book 2009: Development Plans and Projects

Commune GIS	Commune	Temporary Agreements				Supporter	Funding Source	Listed in CIP before DIW
		Project Name	Quantity	Unit	Est.Cost (K.Riels)			
						Forestry and Fisheries		
130106	Putrea	Chicken-pig raising demonstration	8	demo	0	Department of Agriculture Forestry and Fisheries		<input type="checkbox"/>
Social								
130106	Putrea	Kindergarten school building	1	building	0	Department of Education Youth and Sports		<input type="checkbox"/>
130106	Putrea	Teacher supply	1	person	0	Department of Education Youth and Sports		<input type="checkbox"/>
130106	Putrea	Primary school construction	1	building	0	Department of Education Youth and Sports		✓
130106	Putrea	Literacy class	1	class	0	Department of Education Youth and Sports		✓
130106	Putrea	Literacy teacher support	1	person	0	Department of Education Youth and Sports		✓
130106	Putrea	Historical and educational documents supply	1	set	0	Buddhist For Development		<input type="checkbox"/>
Administration and Security								
130106	Putrea	Cupboard and administration documents support	1	set	0	Buddhist For Development		<input type="checkbox"/>
130106	Putrea	Movies show on land law, domestic violence and marriage law	3	time	0	Buddhist For Development		<input type="checkbox"/>
130106	Putrea	Experience sharing meeting of out of court conflict resolution committee	3	time	0	Buddhist For Development		<input type="checkbox"/>
130106	Putrea	Land law dissemination	3	training	0	Department of Land Management, Urban Planning & Construction		✓
Gender								
130106	Putrea	Gender analysis training	1	training	0	Department of Women		<input type="checkbox"/>
130106	Putrea	Pictorial materials use training	1	training	0	Department of Women		<input type="checkbox"/>
130106	Putrea	Gender concept training	1	training	0	Department of Women		<input type="checkbox"/>
130106	Putrea	Gender mainstreaming in agriculture sector reporting training	1	training	0	Department of Women		<input type="checkbox"/>
130106	Putrea	Vocational training to woman target group	1	training	0	Department of Women		<input type="checkbox"/>

District Data Book 2009: Development Plans and Projects

Commune GIS	Commune	Temporary Agreements				Supporter	Funding Source	Listed in CIP before DIW
		Project Name	Quantity	Unit	Est.Cost (K.Riels)			
130106	Putrea	WCFPs capacity and courageousness strengthening forum	1	training	0	Department of Women		<input type="checkbox"/>
130106	Putrea	Law against domestic violence dissemination	2	training	0	Department of Women		<input checked="" type="checkbox"/>

Source: CDPD, District Level Detail TA resulting from DIW

8.3 Outputs, estimated and actual costs of C/S Fund Projects between 2005 and 2008, by Commune

Commune	Project Type	Budget Year	Output		Quantity	Unit	Unit Cost MR	
			Description	Type			Estimate	Actual
S'ang	Rural Transport	2005	Laterite road	Upgrade	1.04	Km	22.43	22.23
S'ang	Rural Domestic Water Supplies	2006	Drilled well with Afridev pump	New	5	Place	28.99	26.00
S'ang	Rural Transport	2007	Laterite road	New	1.163	Km	24.36	33.24
S'ang	Rural Transport	2007	Laterite road	Repair	0.85	Km	8.87	33.24
S'ang	Rural Transport	2008	Laterite road	New	0.74	Km	22.72	26.98
S'ang	Rural Transport	2008	Double pipe culvert	New	1	Place	4.38	26.98
Tasu	Rural Transport	2006	Single pipe culvert	New	1	Place	2.96	39.50
Tasu	Rural Transport	2006	Double pipe culvert	New	2	Place	8.55	39.50
Tasu	Rural Transport	2006	Laterite road	New	2.05	Km	32.59	39.50
Tasu	Rural Transport	2007	Double pipe culvert	New	1	Place	5.08	35.28
Tasu	Rural Transport	2007	Laterite road	New	1.167	Km	30.20	35.28
Khyang	Rural Transport	2005	Laterite road	Upgrade	1	Km	26.85	26.65
Khyang	Rural Transport	2006	Laterite road	New	1.05	Km	24.23	24.57
Khyang	Rural Transport	2006	Single pipe culvert	New	2	Place	3.58	24.57
Khyang	Rural Transport	2007	Laterite road	New	1.7	Km	31.69	31.69
Khyang	Rural Transport	2007	Single pipe culvert	New	3	Place	5.07	31.69
Khyang	Rural Transport	2008	Laterite road	New	0.7	Km	29.59	29.40
Chrach	Rural Transport	2005	Earth road	Repair	1	Km	20.81	22.41
Chrach	Rural Transport	2005	Laterite road	Upgrade	1	Km	26.43	26.23
Chrach	Rural Transport	2005	Single pipe culvert	New	1	Place	1.65	22.41
Chrach	Rural Transport	2006	Laterite road	New	1.15	Km	26.54	24.00
Chrach	Rural Transport	2007	Laterite road	New	1.996	Km	53.40	53.40
Chrach	Rural Transport	2007	Single pipe culvert	New	2	Place	0	53.3955
Thmea	Rural Transport	2005	Earth road	Repair	0.95	Km	19.03	20.63
Thmea	Rural Transport	2005	Single pipe culvert	New	1	Place	1.65	20.63
Thmea	Rural Transport	2006	Laterite road	New	1.43	Km	47.38	44.27
Thmea	Rural Transport	2006	Double pipe culvert	New	1	Place	5.27	44.27
Thmea	Rural Transport	2007	Single pipe culvert	New	1	Place	2.00	78.46
Thmea	Rural Transport	2007	Laterite road	New	2.11	Km	69.10	78.46
Thmea	Rural Transport	2007	Double pipe culvert	New	6	Place	7.37	78.46
Putrea	Rural Transport	2005	Double pipe culvert	New	1	Place	2.59	21.80
Putrea	Rural Transport	2005	Earth road	Repair	1	Km	19.28	21.80
Putrea	Rural Domestic Water Supplies	2005	Drilled well with Afridev pump	New	3	Place	16.72	20.13

Commune	Project Type	Budget Year	Output		Quantity	Unit	Unit Cost MR	
			Description	Type			Estimate	Actual
Putrea	Rural Domestic Water Supplies	2005	Drilled well with VN no 6 pump	New	3	Place	8.56	20.13
Putrea	Rural Domestic Water Supplies	2006	Drilled well with Afridev pump	New	6	Place	35.00	31.20
Putrea	Rural Transport	2007	Single pipe culvert	New	1	Place	0	42.4391
Putrea	Rural Transport	2007	Double pipe culvert	New	1	Place	3.73	42.44
Putrea	Rural Transport	2007	Triple pipe culvert	New	1	Place	7.22	42.44
Putrea	Rural Transport	2007	Laterite road	New	1.188	Km	31.49	42.44
Putrea	Rural Transport	2008	Single pipe culvert	New	1	Place	2.76	72.53
Putrea	Rural Transport	2008	Double pipe culvert	New	1	Place	5.17	72.53
Putrea	Rural Transport	2008	Laterite road	New	1.5	Km	64.71	72.53

Source: PID

8.4 Total Expenditure on C/S Fund Projects by sector and commune between 2005 and 2008

Sector	Total Cost in Million Riels					
	S'ang	Tasu	Khyang	Chrach	Thmea	Putrea
Rural Domestic Water Supplies	26.00					51.33
Rural Transport	82.45	74.79	112.31	102.03	99.10	94.33

Source: PID

8.5 Actual 2009 C/S Fund projects by Commune

Commune	Project Type	Project Output		Quantity	Unit	Fund Source (Riels)		
		Description	Type			Total	C/S	Local Contribution
S'ang	Rural Transport	Laterite road	Repair	1.1	km	38,692,800	38,192,800	500,000
Tasu	Rural Transport	Laterite road	New	1.85	km	62,524,099	62,024,099	500,000
Tasu	Rural Transport	Single pipe culvert 0.6m diameter	New	4	Place	62,524,099	62,024,099	500,000
Khyang	Rural Transport	Laterite road	Repair	1.5	km	41,497,700	41,208,700	289,000
Chrach	Rural Transport	Laterite road	Repair	0.9	km	69,562,400	69,062,400	500,000
Chrach	Rural Transport	Laterite road	Repair	0.95	km	69,562,400	69,062,400	500,000
Chrach	Rural Transport	Double pipe culvert 0.6m diameter	New	1	Place	69,562,400	69,062,400	500,000
Thmea	Rural Transport	Laterite road	Repair	0.8	km	67,174,700	66,574,700	600,000
Thmea	Rural Transport	Laterite road	Repair	0.75	km	67,174,700	66,574,700	600,000
Thmea	Rural Transport	Single pipe culvert 0.6m diameter	New	4	Place	67,174,700	66,574,700	600,000
Thmea	Rural Transport	Single pipe culvert 0.6m diameter	New	1	Place	67,174,700	66,574,700	600,000
Putrea	Rural Transport	Laterite road	Repair	0.63	km	44,231,000	44,031,000	200,000
Putrea	Rural Transport	Single pipe culvert 0.6m diameter	New	4	Place	44,231,000	44,031,000	200,000

Source: PID

9 District level Projects from 2006 to 2009

District Initiative Projects (DIPs) are funded by Danida, DFID and PSDD (UNDP, DFID and SIDA).

Funding for 2006-2008

Between 2006 and 2008 there were 14 provinces funded by PSDD and 10 by Danida and DFID. The list of provinces and who funded these is below

Danida and DFID funded DIPs:

Kampong Cham	Kampong Speu	Koh Kong	Kratie	Monduliri
Pursat	Ratanakiri	Siem Reap	Sihanoukville	Kep

PSDD funded DIPs:

Banteay Meanchey	Battambang	Kampong Chhnang	Kandal	Phnom Penh
Prey Veng	Svay Rieng	Takeo	Kampong Thom	Preah Vihear
Stung Treng	Kampot	Oddar Meanchey	Pailin	

Funding for 2009

In 2009 there was a change to the number of provinces funded by the two streams. Danida and DFID were still funding the same 10 provinces they had been funding the previous three years, but two more provinces were added *Kampong Thom and Kampot*. Now PSDD funds 12 provinces and Danida and DFID fund 12.

9.1 District Initiative Infrastructure Projects from 2006 to 2009

9.1.1 District Initiative Infrastructure Projects for 2006 to 2008

No District Initiative Infrastructure Projects were implemented in this district for 2006-2008

9.1.2 District Initiative Infrastructure Projects in 2009

No District Initiative Infrastructure Projects have been implemented in this district for 2009

9.2 District Initiative Service Projects from 2006 to 2009

9.2.1 District Initiative Service Projects for 2006 to 2008

No District Initiative Service Projects were implemented in this district for 2006-2008

9.2.2 District Initiative Service Projects in 2009

No District Initiative Service Projects have been implemented in this district for 2009

9.3 Inter Commune Council Projects in 2008 and 2009

9.3.1 ICC Projects in 2008

No ICC projects in this district at this time

9.3.2 ICC Projects in 2009

No ICC projects in this district at this time

Source: ICC project, Ministry of Interior (DoLA), -UNDP project for Local Governance – DDLG

9.4 Other Projects in 2008 and 2009

9.4.1 RPRP

There are no RPRP projects being implemented in this district or province at this time. The RPRP is only being implemented in Svay Rieng and Prey Veng

9.4.1.1 RPRP Projects from 2006 to 2008

No RPRP projects in this district at this time

9.4.1.2 RPRP Projects in 2009

No RPRP projects in this district at this time

9.4.2 Seth Korma

9.4.2.1 Seth Korma 2007

There are no Seth Korma projects being implemented in this district or province at this time.

Source: UNICEF

9.4.2.2 Seth Korma 2008

There are no Seth Korma projects being implemented in this district or province at this time.

Source: UNICEF

9.4.2.3 Seth Korma 2009

There are no Seth Korma projects being implemented in this district or province at this time.

Source: UNICEF

SECTION D: SERVICES AND ORGANIZATIONS

10 Infrastructure

10.1 Length of and Expenditure on Roads in 2008, by District

Roads	PVR	Chey Sen	Chheb	Choam Khsant	Kuleaen	Rovieng	Sangkom Thmey	Tbaeng Meanchey	Preah Vihear
Length of paved road in the district	16	0	0	0	0	0	0	0	16 km
Length of unpaved roads in the district	667	142	n/a	64	53	408	n/a	n/a	n/a
Amount spent on construction of roads in 2008 (\$)	516,360	32,227	148,191	60,796	51,195	97,483	60,633	46,295	19,540
Amount spent on repair and rehabilitation of roads in 2008 (\$)	16,731	0	0	0	0	0	0	0	16,731

Note 1: Please note that these data are not necessarily complete or correct. The data are derived from government agencies at provincial and district level which used different recording systems, did not always have complete data or were, sometimes, less than willing to share their data.

Note 2: Please be aware that these data are incomplete due to the fact that the amounts for the construction, repair and rehabilitation recorded reflect only funds provided by the government, not the contributions by any other parties.

10.2 Scale of and Expenditure on Irrigation in 2008, by District

Irrigation	PVR	Chey Sen	Chheb	Choam Khsant	Kuleaen	Rovieng	Sangkom Thmey	Tbaeng Meanchey	Preah Vihear
Number of irrigation schemes operating in 2008	2	n/a	n/a	n/a	1	n/a	n/a	n/a	1
Total nr of hectares under irrigation in dry season 2008	22	n/a	n/a	n/a	22	n/a	n/a	n/a	n/a
Total funds spent in 2008 on construction of irrigation systems (\$)	-	n/a	n/a	n/a	n/a	n/a	n/a	n/a	n/a
Total funds spent in 2008 on rehabilitation/repair of irrigation systems (\$)	-	n/a	n/a	n/a	n/a	n/a	n/a	n/a	n/a
Total funds spent in 2008 on operation and maintenance (\$)	-	n/a	n/a	n/a	n/a	n/a	n/a	n/a	n/a

Note 1: Please note that these data are not necessarily complete or correct. The data are derived from government agencies at provincial and district level which used different recording systems, did not always have complete data or were, sometimes, less than willing to share their data.

Note 2: Please be aware that the data above are incomplete as these only reflect funds provided by the government, not the contributions by farmers or other parties.

10.3 Power Supply in 2008, by District

Electricity	PVR	Chey Sen	Chheb	Choam Khsant	Kuleaen	Rovieng	Sangkom Thmey	Tbaeng Meanchey	Preah Vihear
Total number of electricity connections to households	2,297	0	0	365	0	350	0	0	1,582
Total number of electricity connections to agencies, companies, organizations	52	0	0	0	0	0	0	0	52
Total volume in KWh of electricity consumed last in 2008	521,085	0	0	18,700	0	17,600	0	0	484,785
Total amount collected from users for consumed electricity (\$)	363,530	0	0	18,700	0	17,600	0	0	327,230
Per capita electricity consumption in 2008 in Kwh	16	0	0	1	0	0	0	0	35

Note 1: Please note that these data are not necessarily complete or correct. The data are derived from government agencies at provincial and district level which used different recording systems, did not always have complete data or were, sometimes, less than willing to share their data.

Note 2: These data only record electricity provided by electricity companies and does not include homes powered by generators or batteries (for this information see Section B: General Profile, Part 1: General Information; table 1.3.1 and chart 1.3.4).

Note 3: In most provinces electricity is only provided through town-based networks

Note 4: Per capita consumption is calculated by dividing the total volume of electricity produced in 2008 by the number of people living in each district as per the 2008 census (for the provincial data it is calculated against the number of people living in the province)

11 Health Facilities

Please note that the Operational District (health) boundaries are different to the administrative district boundaries. Therefore the data provided here shows the facilities, staff, NGOs etc in each Operational District within the province NOT the administrative district.

Acronyms

Com Cov	Commune Covered	MW2	Secondary Midwives
CPA	Complementary Package of Activities	NU1	Primary Nurse
Dr	Doctor	NU2	Secondary Nurse
FDH	Former District Hospital	OD	Operational District
HC	Health Center	Others	Other Staff
HC (NB)	Health Center no building	PHD	Provincial Health Department
HP	Health Post	Pop 04-05	Population Covered 2004 or 2005
MA	Medical Assistant	RH	Referral Hospital
MPA	Minimum Package of Activities	Vil Cov	Village Covered
MW1	Primary Midwives	VIL-HC	Distance from Village to Health Center

11.1 Health Facilities in the Province, by Operational District

Preah Vihear	OD	RH	HC	HP
Preah Vihear	1	1	13	19
Total	1	1	13	19

11.2 Health Facilities and Staff in the province, by Operational District

This table shows health facilities, staff and coverage of health facilities in each operational district.

No	Facility Name	Type	Class	Dr	Ma	Nu2	Nu1	Mw2	Mw1	Others	Com Cov	Vil Cov	Pop. 04-05
Preah Vihear													
1	Boribo	HC	MPA	0	0	2	1	0	1	0	2	6	4,384
2	Chamraeun	FDH	MPA	0	0	2	6	0	2	4	4	22	13,739
3	Chhaeb	FDH	MPA	0	0	1	6	0	4	8	8	26	13,978
4	Chhnuon	HC	MPA	0	0	2	6	1	2	1	3	11	5,355
5	Choam Ksant	FDH	MPA	0	1	0	4	1	3	1	4	16	11,379
6	Chrach	HC(NB)	None	0	0	0	0	0	0	0	3	12	8,800
7	Kou Len	FDH	MPA	0	0	0	4	1	3	1	5	18	14,716
8	Phnom Dek	HC	MPA	0	0	3	1	0	3	1	3	15	9,132
9	Putrea	HP	Nil	0	0	0	0	0	0	0	1	1	
10	Ro Vieng	FDH	MPA	0	0	3	2	0	2	1	6	31	16,651
11	Saang	FDH	MPA	0	0	5	6	0	6	0	3	9	8,560
12	Sra'aem	HC	MPA	0	0	2	3	1	2	0	1	7	4,155
13	Tbaeng Mean chey	HC	MPA	0	0	2	5	0	1	0	6	32	23,814
Total:				0	1	22	44	4	29	17	49	206	134,663

Source: MEDiCAM – Infrastructure - (http://www.medicam-cambodia.org/hsi/health_system/srch/index.asp?cboLcn=6&cmdSearch=Search&cboCHName=&cboType=)

11.3 Deliveries in 2007 in the Province, by Operational District

OD	Deliveries	Deliveries at home		Deliveries	Total deliveries	Total deliveries
	at HC	By Health Staff	ByTBAs	at RH	by Health Staff	by health staff and TBAs
Tbeng Meanchey	1019	343	1450	326	1688	3138
<i>Sub-total</i>	<i>1019</i>	<i>343</i>	<i>1450</i>	<i>326</i>	<i>1688</i>	<i>3138</i>

Source: MoH, Annual Statistics 2007

12 Education³

12.1 Schools, Classes, Students, Staff, for all levels, for 2007/2008 by District

District	Number of Schools	Disadv. Schools	Number of Classes	Classes in Pagoda	Enrollment		Repeaters		Teaching Staff		Non-Teaching Staff		Total Staff	
					Total	Girl	Total	Girl	Total	Female	Total	Female	Total	Female
Chey Sen	23	2	144	0	5,280	2,467	749	322	89	16	22	4	111	20
Chheb	27	1	144	3	4,135	1,888	982	442	94	10	6	0	100	10
Choam Ksan	29	3	164	2	4,852	2,409	689	305	105	35	19	7	124	42
Koulen	33	0	161	6	5,966	2,875	806	379	125	27	24	3	149	30
Rovieng	49	1	300	2	9,512	4,582	1,381	578	262	105	42	7	304	112
Sangkum Thmei	26	4	130	0	4,453	2,206	677	327	91	15	17	2	108	17
Tbeng Meanchey	28	0	221	4	8,376	3,862	783	344	238	115	70	24	308	139
Whole Province	215	11	1,264	17	42,574	20,289	6,067	2,697	1,004	323	200	47	1,204	370
- Urban Area	28	0	221	4	8,376	3,862	783	344	238	115	70	24	308	139
- Rural Area	98	7	574	2	19,245	9,255	2,807	1,227	442	136	81	13	523	149
- Remote Area	89	4	469	11	14,953	7,172	2,477	1,126	324	72	49	10	373	82

12.2 Characteristics of Schools and School Principals for 2007/2008 by Commune

Commune	Number of Schools				2 - Shift	Floating	Schools	Attached	Schools Without		Characteristics of School Principals (Incharge)			
	Pre-Sch	Primary	College	Lycee	Schools	Schools	in Pagoda	Pre-Sch	Water Sup.	Latrine	Avg. Age	Avg. Service	U.Sec+ Ed.	Female
S'ang	1	2	1	1	2	0	0	1	2	4	27.9	7.4	1	1
Tasu	0	2	0	0	1	0	0	0	0	2	45.6	24.5	0	0
Khyang	0	2	1	0	3	0	0	0	0	0	36.7	13.0	1	0
Chrach	0	6	1	0	7	0	1	0	6	6	31.9	7.0	2	0
Thmea	0	3	0	0	3	0	0	0	1	1	29.5	9.7	0	0
Putrea	0	3	0	0	3	0	0	0	1	1	38.5	16.3	0	1

³ All the data for section 12 comes from the Ministry of Education, Youth and Sport (MoEYS)

12.3 Enrolment by Level of Education, 2006/2007 by Commune

Commune	School	Pre school		Primary School		Lower Secondary School		Upper Secondary School		Enrolment	
		Total	Female	Total	Female	Total	Female	Total	Female	Total	Female
S'ang	5	40	25	628	291	489	235	68	34	1225	585
Tasu	2	0	0	493	239	0	0	0	0	493	239
Khyang	3	0	0	939	469	82	39	0	0	1021	508
Chrach	6	0	0	1026	480	0	0	0	0	1026	480
Thmea	3	0	0	674	269	0	0	0	0	674	269
Putrea	3	0	0	869	416	0	0	0	0	869	416

12.4 Enrolment by Level of Education, 2007/2008 by Commune

Commune	School	Pre school		Primary School		Lower Secondary School		Upper Secondary School		Enrolment	
		Total	Female	Total	Female	Total	Female	Total	Female	Total	Female
S'ang	5	48	23	558	255	409	217	136	59	1151	554
Tasu	2	0	0	488	261	0	0	0	0	488	261
Khyang	3	0	0	918	432	107	48	0	0	1025	480
Chrach	7	0	0	1005	467	57	18	0	0	1062	485
Thmea	3	0	0	672	260	0	0	0	0	672	260
Putrea	3	0	0	882	427	0	0	0	0	882	427

12.5 Aspects of Enrolment for 2007/2008 by Commune

Commune	% Repeaters (Total)			% Over-age Enrollment (Total)			% Repeaters (Girl)			% Over-age Enrollment (Girl)		
	Primary	L.Sec.	U.Sec.	Primary	L.Sec.	U.Sec.	Primary	L.Sec.	U.Sec.	Primary	L.Sec.	U.Sec.
S'ang	11.1	2.7	0.0	23.1	59.4	60.3	10.2	2.8	0.0	23.1	55.3	52.5
Tasu	12.1	0.0	0.0	22.5	0.0	0.0	10.0	0.0	0.0	20.3	0.0	0.0
Khyang	7.8	0.0	0.0	36.8	74.8	0.0	5.8	0.0	0.0	41.7	70.8	0.0
Chrach	18.8	0.0	0.0	36.2	77.2	0.0	19.5	0.0	0.0	37.9	66.7	0.0
Thmea	23.4	0.0	0.0	41.7	0.0	0.0	22.7	0.0	0.0	43.1	0.0	0.0
Putrea	22.6	0.0	0.0	36.8	0.0	0.0	20.8	0.0	0.0	35.4	0.0	0.0

12.6 School Buildings for all schools in the District for 2007/2008, by Commune

Commune	Total Number of		Concrete/Brick Structure		Wooden Structure		Bamboo Structure		New Buildings		Buildings Without Good		
	Buildings	Rooms	Buildings	Rooms	Buildings	Rooms	Buildings	Rooms	Repaired	Constructed	Floor	Roof	Wall
S'ang	5	28	2	14	3	14	0	0	2	0	1	0	3
Tasu	2	8	0	3	1	4	1	1	1	0	0	0	1
Khyang	5	16	3	12	2	4	0	0	0	0	2	0	0
Chrach	8	21	1	6	7	15	0	0	0	2	1	1	2
Thmea	5	12	2	8	3	4	0	0	1	1	1	0	0
Putrea	3	13	2	10	0	0	1	3	0	0	1	0	1

12.7 Conditions of Classrooms and Existence of Separate School Office and Library, by Commune

Commune	Number of Class rooms	Number of Classrooms			Classrooms Without Good			Number of Furniture needed				Schools with Separate	
		in Pagoda	New Repaired	New Constr.	Floor	Roof	Wall	Desks	Chairs	Black-board	Teacher Table	Office	Library
S'ang	22	0	11	0	2	0	13	125	17	5	15	1	1
Tasu	8	0	4	0	0	0	1	68	5	5	5	1	1
Khyang	14	0	0	0	4	0	0	139	2	5	5	1	0
Chrach	17	0	0	2	2	2	3	95	35	14	13	1	0
Thmea	10	0	1	1	2	0	0	100	0	0	3	2	1
Putrea	11	0	0	0	3	0	3	195	25	7	5	2	0

12.8 Community Participation and Financing across all schools in the District for 2007/2008 by Commune

Commune	Parent Association				Comm. Teachers	Teaching Monks	PAP Fund (Riel)		Number of Schools Obtaining Funds from				
	Exists	Held Meet	Total	Female			per Student	per School	Sch. Income	Community	Gvt. For building	Abroad	IOs/NGOs
S'ang	4	4	11	2	0	0	18,231	8,914,800	0	1	0	0	1
Tasu	1	1	7	1	0	0	12,165	1,995,000	0	0	0	0	0
Khyang	3	3	5	2	0	0	-	-	0	0	0	0	0
Chrach	7	7	6	2	0	0	11,733	1,462,667	0	0	0	0	0
Thmea	3	3	6	2	0	0	10,196	1,728,250	0	0	0	0	0
Putrea	3	3	7	3	0	0	10,809	1,929,450	0	0	0	0	0

12.9 Percentage Student Flow Rates and Graduation by level 2006/2007, by Commune

Commune	Primary Level (Grades 1-6)			Lower Secondary Level (Grades 7-9)			Upper Secondary Level (Grades 10-12)			Successful Candidates		
	Promotion	Repetition	Dropout	Promotion	Repetition	Dropout	Promotion	Repetition	Dropout	Grade 6	Grade 9	Grade 12
S'ang	63.1	9.9	27.1	72.6	2.2	25.2	73.5	0.0	26.5	66	124	0
Tasu	84.2	12.0	3.9	0.0	0.0	0.0	0.0	0.0	0.0	53	0	0
Khyang	81.8	7.7	10.5	80.5	0.0	19.5	0.0	0.0	0.0	78	0	0
Chrach	72.4	18.4	9.2	0.0	0.0	0.0	0.0	0.0	0.0	75	0	0
Thmea	61.3	23.3	15.4	0.0	0.0	0.0	0.0	0.0	0.0	17	0	0
Putrea	67.0	22.9	10.1	0.0	0.0	0.0	0.0	0.0	0.0	47	0	0

13 Staff and Resources at the District

This chapter presents data from the District Information System, collected around the middle of 2009 unless otherwise specified.

13.1 District Councilors elected in 2009

Name	Sex	Year of Birth	Function	Phone
រស់ ចាន់ធី	M	05-06-1960	Chairperson of The Council	011-203 285
ហុង ហ៊ុ	M	21-02-1970	Councillor	011-575 769
មាស ស្បើន	M	22-08-1949	Councillor	
សួរ សេន	M	22-03-1944	Councillor	099-929 142
វ៉ា គឹមសួរ	F	11-02-1960	Councillor	011-824 331
ចាប ហឿន	M	07-07-1945	Councillor	011-342 127
ទិត ស៊ីថា	M	26-01-1970	Councillor	011-903 591
ដួង ឡេងសារិន	M	16-03-1936	Councillor	099-986 715
ហេង សុខ័ន្ទ	M	04-07-1973	Councillor	099-543 080
ហួត បូឡែ	F	05-01-1984	Councillor	
តាច់ សៅ	M	19-01-1950	Councillor	

13.2 Committees of the Council

Please note at the time of producing the district data books the composition of the committees was not known for all district councils and therefore data were not available for 13.2.1, 13.2.2, 13.2.3.

13.2.1 Technical Facilitation Committee

13.2.2 Women's and Children's Affairs Committee

13.2.3 Procurement Committee

13.3 Board of Governors

Name	Sex	DoB	Function	Salary Level	Body	Phone
ថោង សាគឿន	M	1958	District Governor	ក៣.៦	High Ranking Civil Servant	099-362 963
គឹម សាត	M	1965	District Deputy Governor	ខ២.៦	Medium Civil Servant	011-259 094
ទិត ឡាំង	F	1968	District Deputy Governor	គ១.៥	Secretary	099-609 887

13.4 Offices under Sala Krong, Sala Srok and Sala Khan

Office Name	Chief		Deputy Chief		No. of Staff				Office Area (m2)	No of vehicle (public or program)	
					State		Contract				
	M	F	M	F	M	F	M	F		vehicle	moto
District/ Khan Cabinet	0	0	0	1	4	3	1	0	110.5	0	0
Adminnistration Office	1	0	0	0	2	3	0	0	Borrow	0	0
Economy Office	0	1	0	0	2	0	0	0	Borrow	0	0
Social Affair Office	0	0	1	0	0	0	0	0	Borrow	0	0

13.5 Municipality/District/Khan line offices

Office Name	Chief		Deputy Chief		No. of Staff				Office Area (m2)	No of vehicle (public or program)	
					State		Contract				
	M	F	M	F	M	F	M	F		vehicle	moto
District/ Khan Police Headquarter	1	0	4	0	77	2	0	0	86.25	0	14
District/ Khan Military Police Headquarter	1	0	2	0	3	0	0	0	34.5	0	1
District/ Khan Military Subregion	1	0	3	0	16	0	0	0	72	0	0
Women Affairs Office	0	0	0	0	0	1	0	0	Borrow	0	0
Education Office	1	0	2	0	100	0	2	0	90	0	1
Agriculture Office	0	0	0	0	1	4	4	0	Borrow	0	9
Cult and Religion Office	1	0	0	0	0	0	0	0	Borrow	0	0
Information Office	0	0	0	0	0	0	1	0	0	0	0
Public Work Office	1	0	0	0	0	0	0	0	Borrow	0	1
Commerce Office	0	0	0	0	1	0	0	0	Borrow	0	1
Forestry Administration Sangkat	1	0	1	0	0	0	0	0	Borrow	0	1
Forestry Administration Unit	1	0	2	0	1	0	0	0	Borrow	0	1

13.6 Properties and Equipment of District Administration

13.6.1 Buildings

Description	Unit	Number	Remark
Office building type			
- Concrete	building	0	
- Wood	building	1	
- Mixed	building	0	
Total floor space	m2		
- Concrete	m2	0	
- Wood	m2	110.5	
- Mixed	m2	0	
Building condition			
- Concrete	%	0	
- Wood	%	80	
- Mixed	%	0	
Office reserved land area	m2	300,000	
Total office land area	m2	8,497	

13.6.2 Means of Transport available at the District Administration

Description	Unit	Number	Remark
Vehicle (type, size and condition)	Vehicle	0	
Motorcycle (type, size and condition)	Motor	2	

13.6.3 Equipment in District Offices

Description	Unit	Number	Remark
Generator	per set	1	
Photocopy machine at the office	per set	0	
Private photocopy machine at the district town	place	0	
Telephone network (mobile line service)	network	2	011, 012
Telephone network (land line service)	network	0	
Fax (include Fax number)	per set	0	
Computer	per set	1	
Printer	per set	1	
Scanner	Per set	0	
Number of computers those can access Internet and email services in the municipality/ district/khan office (including the technical line offices (please provide the email address)	set	0	
Typewriters (including the technical line offices)	per set	1	
Staff of Municipality/district/khan office can use computer	person	3	

13.6.4 Equipment and facilities at the District Town

Description	Unit	Number	Remark
Availability of electricity at noon	Nr Hours	0	
Private internet and email services in the municipality/ district/khan town.	place	0	

13.7 Registered Revenue of the District Administration in 2008⁴

Sources of Revenue	Revenue Collecting Agency	Estimated annual revenue (In Riels)
Slaughter Hosue	Salakhet	1,100,000
Ferry dock	Salakhet	15,000,000
Craft	Provincial Forestry Administration	4,000,000

13.8 Services in the District

13.8.1 Public Sector Services

Type of Infrastructure/services	Unit	Number	
		Public	Private
Schools			
Pre-school	room		
Primary School	room	72	0
Secondary school	room	22	0
High School	room		
University	room		
Health			
Health post	place	1	0
Health center	place	1	0
Referral Hospital	bed		

⁴ Please note that the data in this table are at best estimates. If the table appears blank it does not mean there is no revenue, just that the data have not been recorded/entered.

13.9 Civil Society Organizations active in the District

13.9.1 NGOs, Associations, Programs and Projects

Name	Abbr.	Sector Activities	No. of Target Communes	No. of Target Villages	Office in District
NA	NA	កម្មវិធីសិទ្ធិមនុស្សថ្នាក់មូលដ្ឋាន និងកម្មវិធីក្មេងចិញ្ចឹម	6	21	Yes
NA	IFAD	គម្រោងលើកកម្ពស់ជីវភាពរស់នៅតាមជនបទ	2	2	Yes
NA	ADRA	ទឹកស្អាតធារាសាស្ត្រ អប់រំ លើកកម្ពស់ស្ត្រី	5	18	Yes
NA	OXFAM	ហេដ្ឋារចនាសម្ព័ន្ធ គម្រោងវិនិយោគឃុំ និងដោះស្រាយតាមតម្រូវការជនក្រីក្រ	5	18	Yes

13.9.2 Political Parties active in the Municipality, District and Khan

Name	Abbr.	Office in District
Cambodian People Party	CPP	Yes
FUNCINPEC Party	FUNCINPEC	Yes
NRP	NRP	Yes
SAM RAINSY Party	Sam Rainsy Party	Yes

13.10 Private Sector Organizations

13.10.1 Registered Companies in 2008, by District

On private sector at commune and/or district level	PVR	Chey Sen	Chheb	Choam Khsant	Kuleaen	Rovieng	Sangkom Thmey	Tbaeng Meanchey	Preah Vihear
Businesses and Companies									
Number of registered agricultural enterprises (except family farms)	2	0	0	0	0	2	0	0	0
Number of registered shops, restaurants, transporters and other services	2,672	288	237	471	428	531	155	317	218
Number of manufacturing companies	78	6	3	0	25	12	11	2	19
Number of registered forestry enterprises	-	0	0	0	0	0	0	0	0
Number of registered mining companies	-	0	0	0	0	0	0	0	0
Number of fin/ancial institutions	8	0	0	1	2	2	0	0	3
Number of other commercial institutions	-	0	0	0	0	0	0	0	0
Estimated number of informal enterprises (not registered)	n/a	n/a	n/a	n/a	n/a	n/a	n/a	n/a	n/a
Employment									
Number of people employed in 2008 by companies or any other enterprises	n/a	n/a	n/a	n/a	n/a	n/a	n/a	n/a	n/a
Investment									
Amount invested in 2008 by private sector (\$)	n/a	n/a	n/a	n/a	n/a	n/a	n/a	n/a	n/a
Markets									
Number of markets, operating at least weekly	12	0	1	6	2	1	1	0	1

Note: These data are not comprehensive as different companies and business are registered with different departments and not all departments were able or willing to provide detailed information. The number of informal enterprises reflects a rough estimate, made at provincial level and could not be verified.

Source: Unofficially collected at Provincial Level

13.10.2 Farmers in 2008, by District

Credit	PVR	Chey Sen	Chheb	Choam Khsant	Kuleaen	Rovieng	Sangkom Thmey	Tbaeng Meanchey	Preah Vihear
Volume of credit provided to farmers in 2008 (\$)	4,237,244	311,010	5,500	325,444	723,875	800,975	167,020	1,897,920	5,500
Number of farmers receiving credit in 2008	3,582	451	50	385	614	1,129	270	683	50
Volume of credit provided to companies in 2008 (\$)	n/a	n/a	n/a	n/a	n/a	n/a	n/a	n/a	n/a

Note: Please note that these data are not necessarily complete or correct. The data are derived from government agencies at provincial and district level which used different recording systems, did not always have complete data or were, sometimes, less than willing to share their data.

Source: Unofficially collected at Provincial Level

SECTION E: POVERTY DATA

14 Data on Poverty

14.1 Predicted Poverty Rates for 2009, by commune

The **Predicted Family Poverty Rate** is based on a statistical model (robust multilevel mixed effect regression) at village level developed by the NCDD M&E Unit and uses CDB data for making an estimate of the predicted poverty rate (this is: *the portion of total families in the district or commune who are expected to be poor*) for the following year using current year data.

The basis for this predicted poverty rate also uses IDPoor (a project of the Ministry of Planning with technical assistance provided by GTZ) data

Commune	2004	2009
S'ang	50.10%	.%
Tasu	49.90%	44.50%
Khyang	47.60%	41.40%
Chrach	53.60%	47.30%
Thmea	53.40%	47.20%
Putrea	50.20%	.%

14.2 Poverty data from survey

14.2.1 Identification of Poor Households Program (IDPoor)

The Ministry of Planning IDPoor Program has developed standardized Procedures for Identification of Poor Households in rural areas. These Procedures are implemented using a participatory and consultative process by sub-national government structures and community representatives.

The IDPoor Program is managed by the Ministry of Planning (MOP), in cooperation with the Ministry of Interior's Department of Local Administration (DOLA). The program is supported by the Federal Republic of Germany, with technical assistance provided by German Technical Cooperation (GTZ). In 2009, AusAID also provided funding support to the Program.

Objective

The IDPoor Program aims to implement the Procedures for Identification of Poor Households in rural areas as widely as possible, in order to provide data on the level of poverty of areas and households that can be used by a large range of institutions and organizations for targeting services and development assistance to poor areas and poor households.

Coverage: During 2007, 2008 and 2009 the IDPoor Procedures have been implemented in 18 provinces (with partial or complete coverage), covering a total of around 7000 rural villages. The MOP and a number of NGO partners who are Health Equity Fund Operators have collaborated in collecting this data from different areas.

Categorization: Identified poor households are classified under two poverty categories: Poor Level 1 (very poor), and Poor Level 2 (poor). Households are classified based on data collected using a standard questionnaire, together with consideration by villagers of these households' special circumstances.

Further information: Please go to the IDPoor Program webpage at www.mop.gov.kh/Projects/IDPoor/tabid/154/Default.aspx

This District has not yet been covered by IDPoor